


Product datasheet

Anti-MRPL10 antibody ab229104

2 Images

Overview

Product name	Anti-MRPL10 antibody
Description	Rabbit polyclonal to MRPL10
Host species	Rabbit
Tested applications	Suitable for: WB, IHC-P
Species reactivity	Reacts with: Human Predicted to work with: Cow, Rhesus monkey 
Immunogen	Recombinant fragment within Human MRPL10 (internal sequence). The exact sequence is proprietary. Database link: Q7Z7H8
Positive control	WB: HEK-293T whole cell lysate. IHC-P: Mahlarvu xenograft tissue.

Properties

Form	Liquid
Storage instructions	Shipped at 4°C. Store at +4°C short term (1-2 weeks). Upon delivery aliquot. Store at -20°C long term. Avoid freeze / thaw cycle.
Storage buffer	pH: 7.00 Preservative: 0.01% Thimerosal (merthiolate) Constituents: 1.21% Tris, 0.75% Glycine, 20% Glycerol
Purity	Immunogen affinity purified
Clonality	Polyclonal
Isotype	IgG

Applications

Our [Abpromise guarantee](#) covers the use of **ab229104** in the following tested applications.

The application notes include recommended starting dilutions; optimal dilutions/concentrations should be determined by the end user.

Application	Abreviews	Notes
WB		1/500 - 1/3000. Predicted molecular weight: 29 kDa.

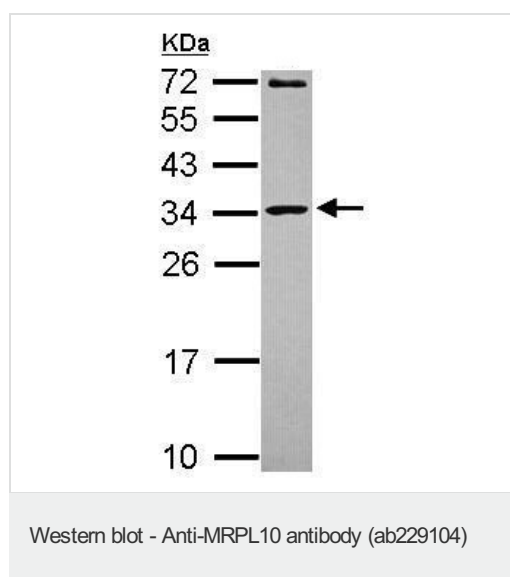
Application	Abreviews	Notes
IHC-P		1/100 - 1/1000.

Target

Sequence similarities Belongs to the ribosomal protein L10P family.

Cellular localization Mitochondrion.

Images

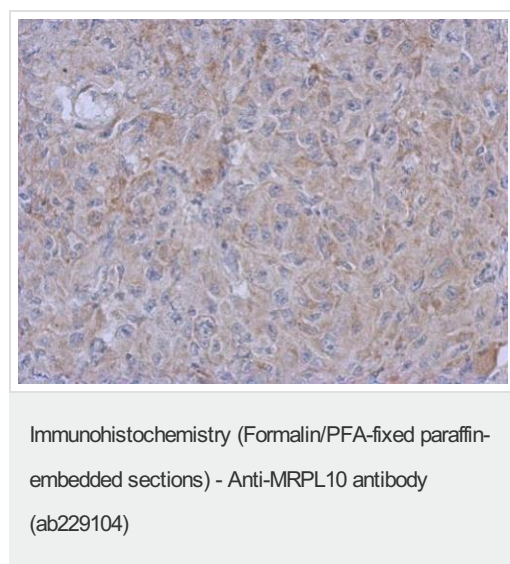


Anti-MRPL10 antibody (ab229104) at 1/1000 dilution + HEK-293T (human epithelial cell line from embryonic kidney transformed with large T antigen) whole cell lysate at 30 µg

Developed using the ECL technique.

Predicted band size: 29 kDa

12% SDS-PAGE



Paraffin-embedded Mahlarvu xenograft tissue stained for MRPL10 with ab229104 at 1/500 dilution in immunohistochemical analysis.

Please note: All products are "FOR RESEARCH USE ONLY. NOT FOR USE IN DIAGNOSTIC PROCEDURES"

Our Abpromise to you: Quality guaranteed and expert technical support

- Replacement or refund for products not performing as stated on the datasheet
- Valid for 12 months from date of delivery
- Response to your inquiry within 24 hours

- We provide support in Chinese, English, French, German, Japanese and Spanish
- Extensive multi-media technical resources to help you
- We investigate all quality concerns to ensure our products perform to the highest standards

If the product does not perform as described on this datasheet, we will offer a refund or replacement. For full details of the Abpromise, please visit <https://www.abcam.com/abpromise> or contact our technical team.

Terms and conditions

- Guarantee only valid for products bought direct from Abcam or one of our authorized distributors