

Product datasheet

Anti-MRPS16 antibody [EPR8835] ab151693

Recombinant RabMAb

1 References 4 Images

Overview

Product name	Anti-MRPS16 antibody [EPR8835]
Description	Rabbit monoclonal [EPR8835] to MRPS16
Host species	Rabbit
Tested applications	Suitable for: WB, IHC-P, ICC/IF Unsuitable for: IP
Species reactivity	Reacts with: Human
Immunogen	Synthetic peptide within Human MRPS16 aa 100-200 (C terminal). The exact sequence is proprietary.
Positive control	HT1080, A673, HepG2 cell lysates; Human kidney tissue; HepG2 cells.
General notes	Mouse, Rat: We have preliminary internal testing data to indicate this antibody may not react with these species. Please contact us for more information.

This product is a recombinant monoclonal antibody, which offers several advantages including:

- High batch-to-batch consistency and reproducibility
- Improved sensitivity and specificity
- Long-term security of supply
- Animal-free production

For more information [see here](#).

Our RabMAb[®] technology is a patented hybridoma-based technology for making rabbit monoclonal antibodies. For details on our patents, please refer to [RabMAb[®] patents](#).

Properties

Form	Liquid
Storage instructions	Shipped at 4°C. Store at -20°C.
Storage buffer	pH: 7.2 Preservative: 0.01% Sodium azide Constituents: 9% PBS, 40% Glycerol (glycerin, glycerine), 0.05% BSA, 50% Tissue culture supernatant
Purity	Tissue culture supernatant

Clonality	Monoclonal
Clone number	EPR8835
Isotype	IgG

Applications

The Abpromise guarantee Our [Abpromise guarantee](#) covers the use of ab151693 in the following tested applications. The application notes include recommended starting dilutions; optimal dilutions/concentrations should be determined by the end user.

Application	Abreviews	Notes
WB		1/1000 - 1/10000. Predicted molecular weight: 15 kDa.
IHC-P		1/50 - 1/100. Perform heat mediated antigen retrieval before commencing with IHC staining protocol.
ICC/IF		1/250 - 1/500.

Application notes Is unsuitable for IP.

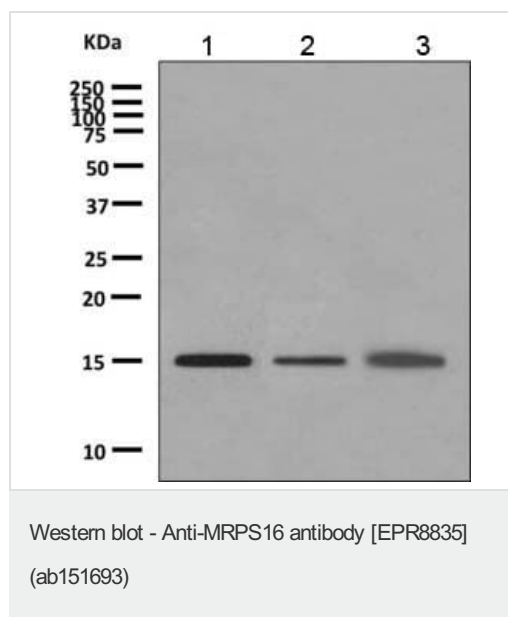
Target

Involvement in disease Defects in MRPS16 are the cause of combined oxidative phosphorylation deficiency type 2 (COXPD2) [MIM:610498]. Defects in the mitochondrial oxidative phosphorylation system result in devastating, mainly multisystem, diseases. COXPD2 symptoms include fatal neonatal metabolic acidosis with agenesis of the corpus callosum.

Sequence similarities Belongs to the ribosomal protein S16P family.

Cellular localization Mitochondrion.

Images



All lanes : Anti-MRPS16 antibody [EPR8835] (ab151693) at 1/1000 dilution

Lane 1 : HT1080 cell lysate

Lane 2 : A673 cell lysate

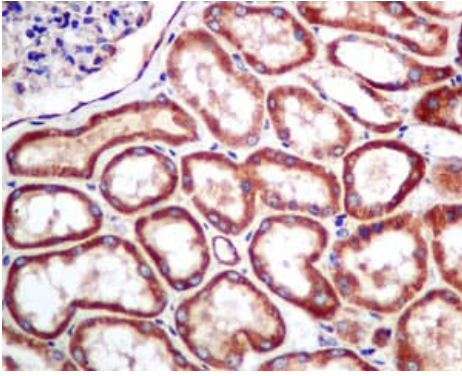
Lane 3 : HepG2 cell lysate

Lysates/proteins at 10 µg per lane.

Secondary

All lanes : Goat anti-rabbit HRP at 1/2000 dilution

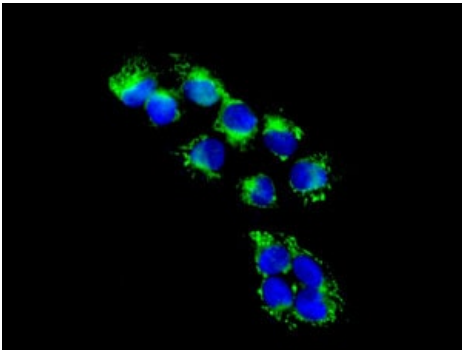
Predicted band size: 15 kDa



Immunohistochemical analysis of paraffin-embedded Human kidney tissue labeling MRPS16 with ab151693 at 1/50 dilution.

Perform heat mediated antigen retrieval before commencing with IHC staining protocol.

Immunohistochemistry (Formalin/PFA-fixed paraffin-embedded sections) - Anti-MRPS16 antibody [EPR8835] (ab151693)



Immunofluorescent analysis of HepG2 cells labeling MRPS16 with ab151693 at 1/250 dilution.

Immunocytochemistry/ Immunofluorescence - Anti-MRPS16 antibody [EPR8835] (ab151693)

Why choose a recombinant antibody?

- 

Research with confidence
Consistent and reproducible results
- 

Long-term and scalable supply
Recombinant technology
- 

Success from the first experiment
Confirmed specificity
- 

Ethical standards compliant
Animal-free production

Anti-MRPS16 antibody [EPR8835] (ab151693)

Please note: All products are "FOR RESEARCH USE ONLY. NOT FOR USE IN DIAGNOSTIC PROCEDURES"

Our Abpromise to you: Quality guaranteed and expert technical support

- Replacement or refund for products not performing as stated on the datasheet
- Valid for 12 months from date of delivery
- Response to your inquiry within 24 hours

- We provide support in Chinese, English, French, German, Japanese and Spanish
- Extensive multi-media technical resources to help you
- We investigate all quality concerns to ensure our products perform to the highest standards

If the product does not perform as described on this datasheet, we will offer a refund or replacement. For full details of the Abpromise, please visit <https://www.abcam.com/abpromise> or contact our technical team.

Terms and conditions

- Guarantee only valid for products bought direct from Abcam or one of our authorized distributors