



Product datasheet

Anti-MS4A3/HTM4 antibody ab224416

2 Images

Overview

<b>Product name</b>	Anti-MS4A3/HTM4 antibody
<b>Description</b>	Rabbit polyclonal to MS4A3/HTM4
<b>Host species</b>	Rabbit
<b>Tested applications</b>	<b>Suitable for:</b> IHC-P, WB
<b>Species reactivity</b>	<b>Reacts with:</b> Human
<b>Immunogen</b>	Recombinant fragment corresponding to Human MS4A3/HTM4 aa 1-45. Sequence: MASHEVDNAELGSASAHGTPGSEAGPEELNTSVYQPI DGSPDYQK  Database link: <a href="#">Q96HJ5</a>   <a href="#">Run BLAST with</a>  <a href="#">Run BLAST with</a>
<b>Positive control</b>	WB: HEK-293T cells overexpressing MS4A3/HTM4 with C-terminal myc-DDK tag, cell lysate. IHC-P: Human bone marrow tissue.
<b>General notes</b>	This product was previously labelled as MS4A3

Properties

<b>Form</b>	Liquid
<b>Storage instructions</b>	Shipped at 4°C. Store at +4°C short term (1-2 weeks). Upon delivery aliquot. Store at -20°C long term. Avoid freeze / thaw cycle.
<b>Storage buffer</b>	pH: 7.20 Preservative: 0.02% Sodium azide Constituents: 40% Glycerol, PBS
<b>Purity</b>	Immunogen affinity purified
<b>Clonality</b>	Polyclonal
<b>Isotype</b>	IgG

Applications

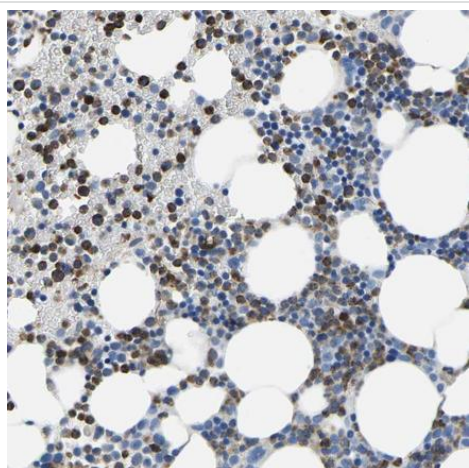
Our [Abpromise guarantee](#) covers the use of **ab224416** in the following tested applications.

The application notes include recommended starting dilutions; optimal dilutions/concentrations should be determined by the end user.

Application	Abreviews	Notes
IHC-P		1/50 - 1/200. Perform heat mediated antigen retrieval with citrate buffer pH 6 before commencing with IHC staining protocol.
WB		1/100 - 1/250. Predicted molecular weight: 23 kDa.

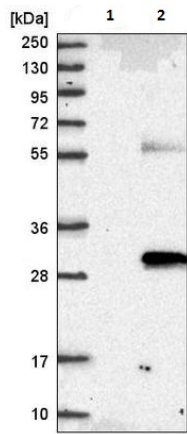
## Target

## Images



Paraffin-embedded human bone marrow tissue stained for MS4A3/HTM4 with ab224416 (1/50) in immunohistochemical analysis.

Immunohistochemistry (Formalin/PFA-fixed paraffin-embedded sections) - Anti-MS4A3/HTM4 antibody (ab224416)



Western blot - Anti-MS4A3/HTM4 antibody (ab224416)

**All lanes :** Anti-MS4A3/HTM4 antibody (ab224416) at 1/100 dilution

**Lane 1 :** HEK-293T (human epithelial cell line from embryonic kidney transformed with large T antigen) cells transfected with vector only, cell lysate

**Lane 2 :** HEK-293T cells transfected with MS4A3/HTM4 with C-terminal myc-DDK tag (~3.1 kDa), cell lysate

**Predicted band size:** 23 kDa

**Please note:** All products are "FOR RESEARCH USE ONLY. NOT FOR USE IN DIAGNOSTIC PROCEDURES"

### Our Abpromise to you: Quality guaranteed and expert technical support

- Replacement or refund for products not performing as stated on the datasheet
- Valid for 12 months from date of delivery
- Response to your inquiry within 24 hours
- We provide support in Chinese, English, French, German, Japanese and Spanish
- Extensive multi-media technical resources to help you
- We investigate all quality concerns to ensure our products perform to the highest standards

If the product does not perform as described on this datasheet, we will offer a refund or replacement. For full details of the Abpromise, please visit <https://www.abcam.com/abpromise> or contact our technical team.

### Terms and conditions

- Guarantee only valid for products bought direct from Abcam or one of our authorized distributors