

Product datasheet

Anti-MTG16 antibody ab234985

2 Images

Overview

| | |
|----------------------------|---|
| Product name | Anti-MTG16 antibody |
| Description | Rabbit polyclonal to MTG16 |
| Host species | Rabbit |
| Tested applications | Suitable for: IHC-P, WB |
| Species reactivity | Reacts with: Human |
| Immunogen | Recombinant fragment corresponding to Human MTG16 aa 39-159. Database link: O75081 |
| Positive control | WB: Jurkat, HEK-293T and HL-60 whole cell lysates. IHC-P: Human spleen tissue. |
| General notes | <p>Reproducibility is key to advancing scientific discovery and accelerating scientists' next breakthrough.</p> <p>Abcam is leading the way with our range of recombinant antibodies, knockout-validated antibodies and knockout cell lines, all of which support improved reproducibility.</p> <p>We are also planning to innovate the way in which we present recommended applications and species on our product datasheets, so that only applications & species that have been tested in our own labs, our suppliers or by selected trusted collaborators are covered by our Abpromise™ guarantee.</p> <p>In preparation for this, we have started to update the applications & species that this product is Abpromise guaranteed for.</p> <p>We are also updating the applications & species that this product has been “predicted to work with,” however this information is not covered by our Abpromise guarantee.</p> <p>Applications & species from publications and Abreviews that have not been tested in our own labs or in those of our suppliers are not covered by the Abpromise guarantee.</p> <p>Please check that this product meets your needs before purchasing. If you have any questions, special requirements or concerns, please send us an inquiry and/or contact our Support team ahead of purchase. Recommended alternatives for this product can be found below, as well as customer reviews and Q&As.</p> |

Properties

| | |
|-------------|--------|
| Form | Liquid |
|-------------|--------|

| | |
|-----------------------------|---|
| Storage instructions | Shipped at 4°C. Store at +4°C short term (1-2 weeks). Upon delivery aliquot. Store at -20°C long term. Avoid freeze / thaw cycle. |
| Storage buffer | pH: 7.40 Constituents: PBS, 50% Glycerol (glycerin, glycerine), 0.03% Proclin 300 |
| Purity | Protein G purified |
| Purification notes | Purity >95%. |
| Clonality | Polyclonal |
| Isotype | IgG |

Applications

Our [Abpromise guarantee](#) covers the use of **ab234985** in the following tested applications.

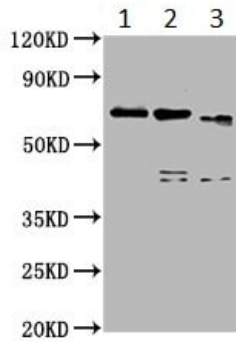
The application notes include recommended starting dilutions; optimal dilutions/concentrations should be determined by the end user.

| Application | Abreviews | Notes |
|-------------|-----------|---|
| IHC-P | | 1/200 - 1/500. |
| WB | | 1/500 - 1/5000. Predicted molecular weight: 71 kDa. |

Target

| | |
|-------------------------------|---|
| Function | Functions as a transcriptional repressor. Regulates the proliferation and the differentiation of erythroid progenitors by repressing the expression of TAL1 target genes. Plays a role in granulocyte differentiation. Isoform 2 functions as an A-kinase-anchoring protein. |
| Tissue specificity | Widely expressed with higher expression in heart, pancreas, skeletal muscle, spleen, thymus and peripheral blood leukocytes. Expressed in hematopoietic cells (at protein level). |
| Involvement in disease | Note=A chromosomal aberration involving CBFA2T3 is found in therapy-related myeloid malignancies. Translocation t(16;21)(q24;q22) that forms a RUNX1-CBFA2T3 fusion protein. |
| Sequence similarities | Belongs to the CBFA2T family. Contains 1 MYND-type zinc finger. Contains 1 TAFH (NHR1) domain. |
| Cellular localization | Nucleus > nucleolus. The RUNX1-CBFA2T3 fusion protein localizes to the nucleoplasm and Nucleus > nucleoplasm. Golgi apparatus membrane. |

Images



Western blot - Anti-MTG16 antibody (ab234985)

All lanes : Anti-MTG16 antibody (ab234985) at 1/500 dilution

Lane 1 : Jurkat (human T cell leukemia cell line from peripheral blood) whole cell lysate

Lane 2 : HEK-293T (human epithelial cell line from embryonic kidney transformed with large T antigen) whole cell lysate

Lane 3 : HL-60 (human promyelocytic leukemia cell line) whole cell lysate

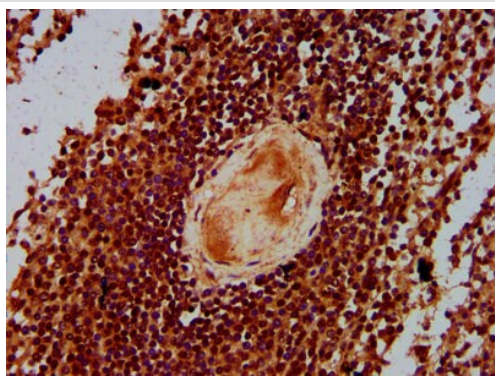
Secondary

All lanes : Goat polyclonal to rabbit IgG at 1/50000 dilution

Predicted band size: 71 kDa

Observed band size: 72 kDa

[why is the actual band size different from the predicted?](#)



Immunohistochemistry (Formalin/PFA-fixed paraffin-embedded sections) - Anti-MTG16 antibody (ab234985)

Paraffin-embedded human spleen tissue stained for MTG16 using ab234985 at 1/300 dilution in immunohistochemical analysis.

After dewaxing and hydration, antigen retrieval was mediated by high pressure in a citrate buffer (pH 6.0). Section was blocked with 10% normal goat serum 30minutes at room temperature. Then primary antibody (1% BSA) was incubated at 4°C overnight. The primary is detected by a biotinylated secondary antibody and visualized tissue using an HRP conjugated SP system.

Please note: All products are "FOR RESEARCH USE ONLY. NOT FOR USE IN DIAGNOSTIC PROCEDURES"

Our Abpromise to you: Quality guaranteed and expert technical support

- Replacement or refund for products not performing as stated on the datasheet
- Valid for 12 months from date of delivery
- Response to your inquiry within 24 hours

- We provide support in Chinese, English, French, German, Japanese and Spanish
- Extensive multi-media technical resources to help you
- We investigate all quality concerns to ensure our products perform to the highest standards

If the product does not perform as described on this datasheet, we will offer a refund or replacement. For full details of the Abpromise, please visit <https://www.abcam.com/abpromise> or contact our technical team.

Terms and conditions

- Guarantee only valid for products bought direct from Abcam or one of our authorized distributors