


Product datasheet

Anti-MTGR1 antibody ab96161

1 References 2 Images

Overview

<b>Product name</b>	Anti-MTGR1 antibody
<b>Description</b>	Rabbit polyclonal to MTGR1
<b>Host species</b>	Rabbit
<b>Tested applications</b>	<b>Suitable for:</b> WB, ICC/IF
<b>Species reactivity</b>	<b>Reacts with:</b> Human <b>Predicted to work with:</b> Mouse, Rat 
<b>Immunogen</b>	Recombinant protein fragment corresponding to a region within amino acids 401 and 598 of Human MTGR1.
<b>Positive control</b>	293T, A431, H1299, HeLa, HepG2, Molt-4, Raji cell lysate. HeLa cells for IF.

Properties

<b>Form</b>	Liquid
<b>Storage instructions</b>	Shipped at 4°C. Upon delivery aliquot and store at -20°C or -80°C. Avoid repeated freeze / thaw cycles.
<b>Storage buffer</b>	pH: 7.00 Preservative: 0.01% Thimerosal (merthiolate) Constituents: 1.21% Tris, 0.75% Glycine, 20% Glycerol
<b>Purity</b>	Immunogen affinity purified
<b>Clonality</b>	Polyclonal
<b>Isotype</b>	IgG

Applications

Our [Abpromise guarantee](#) covers the use of **ab96161** in the following tested applications.

The application notes include recommended starting dilutions; optimal dilutions/concentrations should be determined by the end user.

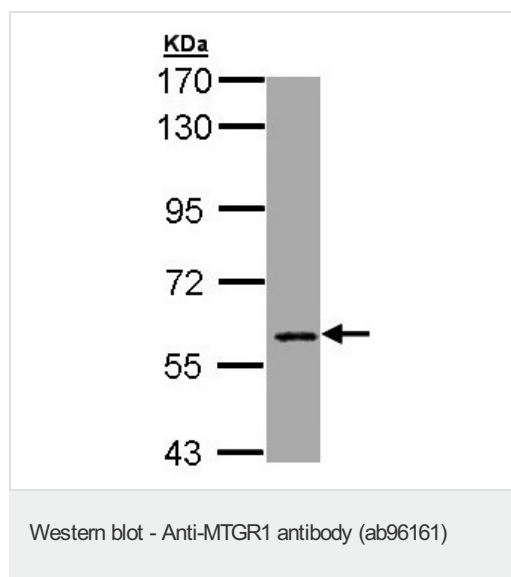
Application	Abreviews	Notes
WB		1/500 - 1/3000. Predicted molecular weight: 67 kDa.

Application	Abreviews	Notes
ICC/IF		1/100 - 1/200.

## Target

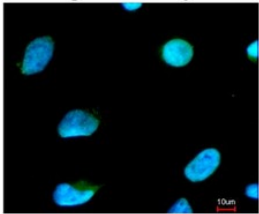
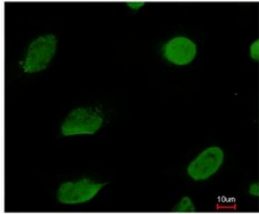
<b>Function</b>	May function as a complex with the chimeric protein RUNX1/AML1-CBFA2T1/MTG8 which is produced in acute myeloid leukemia with the chromosomal translocation t(8;21). May thus be involved in the repression of AML1-dependent transcription and the induction of G-CSF/CSF3-dependent cell growth. May be a tumor suppressor gene candidate involved in myeloid tumors with the deletion of the 20q11 region.
<b>Tissue specificity</b>	Ubiquitously expressed in fetal and adult tissues. Highly expressed in adult brain, heart, lung, kidney, lymph node, appendix, thymus, testis, uterus, small intestine, prostate and thymus.
<b>Sequence similarities</b>	Belongs to the CBFA2T family. Contains 1 MYND-type zinc finger. Contains 1 TAFH (NHR1) domain.
<b>Cellular localization</b>	Nucleus.

## Images



Anti-MTGR1 antibody (ab96161) at 1/1000 dilution + HepG2 whole cell lysate at 30 µg

**Predicted band size:** 67 kDa



Top panel: immunofluorescence analysis of paraformaldehyde-fixed HeLa cells, using ab96161 at 1/200 dilution.

Bottom panel: image merged with DNA probe.

Immunocytochemistry/ Immunofluorescence - Anti-MTGR1 antibody (ab96161)

**Please note:** All products are "FOR RESEARCH USE ONLY. NOT FOR USE IN DIAGNOSTIC PROCEDURES"

### Our Abpromise to you: Quality guaranteed and expert technical support

---

- Replacement or refund for products not performing as stated on the datasheet
- Valid for 12 months from date of delivery
- Response to your inquiry within 24 hours
- We provide support in Chinese, English, French, German, Japanese and Spanish
- Extensive multi-media technical resources to help you
- We investigate all quality concerns to ensure our products perform to the highest standards

If the product does not perform as described on this datasheet, we will offer a refund or replacement. For full details of the Abpromise, please visit <https://www.abcam.com/abpromise> or contact our technical team.

### Terms and conditions

---

- Guarantee only valid for products bought direct from Abcam or one of our authorized distributors