

Product datasheet

Anti-MTHFD1 antibody ab103698

[3 References](#) [3 Images](#)

Overview

Product name	Anti-MTHFD1 antibody
Description	Rabbit polyclonal to MTHFD1
Host species	Rabbit
Tested applications	Suitable for: WB
Species reactivity	Reacts with: Mouse, Human
Immunogen	Full length protein, corresponding to amino acids 1-935 of Human MTHFD1 (AAH50420.1).
Positive control	Human liver tissue lysate, Mouse liver tissue lysate.
General notes	<p>Reproducibility is key to advancing scientific discovery and accelerating scientists' next breakthrough.</p> <p>Abcam is leading the way with our range of recombinant antibodies, knockout-validated antibodies and knockout cell lines, all of which support improved reproducibility.</p> <p>We are also planning to innovate the way in which we present recommended applications and species on our product datasheets, so that only applications & species that have been tested in our own labs, our suppliers or by selected trusted collaborators are covered by our Abpromise™ guarantee.</p> <p>In preparation for this, we have started to update the applications & species that this product is Abpromise guaranteed for.</p> <p>We are also updating the applications & species that this product has been “predicted to work with,” however this information is not covered by our Abpromise guarantee.</p> <p>Applications & species from publications and Abreviews that have not been tested in our own labs or in those of our suppliers are not covered by the Abpromise guarantee.</p> <p>Please check that this product meets your needs before purchasing. If you have any questions, special requirements or concerns, please send us an inquiry and/or contact our Support team ahead of purchase. Recommended alternatives for this product can be found below, as well as customer reviews and Q&As.</p>

Properties

Form	Liquid
Storage instructions	Shipped at 4°C. Upon delivery aliquot and store at -20°C or -80°C. Avoid repeated freeze / thaw cycles.

Storage buffer	pH: 7.4 Constituent: 2.68% PBS
Purity	Protein A purified
Clonality	Polyclonal
Isotype	IgG

Applications

Our [Abpromise guarantee](#) covers the use of **ab103698** in the following tested applications.

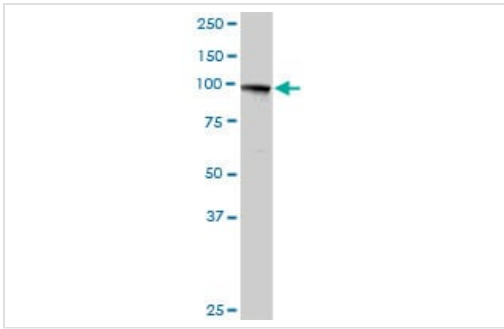
The application notes include recommended starting dilutions; optimal dilutions/concentrations should be determined by the end user.

Application	Abreviews	Notes
WB		Use a concentration of 1 - 5 µg/ml. Predicted molecular weight: 102 kDa.

Target

Tissue specificity	Ubiquitous.
Pathway	One-carbon metabolism; tetrahydrofolate interconversion.
Involvement in disease	Defects in MTHFD1 may be a cause of susceptibility to folate-sensitive neural tube defects (folate-sensitive NTD) [MIM:601634]. The most common NTDs are open spina bifida (myelomeningocele) and anencephaly. Genetic defects in MTHFD1 may affect the risk of spina bifida via the maternal rather than the embryonic genotype. Genetic variation in MTHFD1 could be associated with susceptibility to colorectal cancer (CRC) [MIM:114500].
Sequence similarities	In the N-terminal section; belongs to the tetrahydrofolate dehydrogenase/cyclohydrolase family. In the C-terminal section; belongs to the formate--tetrahydrofolate ligase family.
Domain	This trifunctional enzyme consists of two major domains: an N-terminal part containing the methylene-THF dehydrogenase and cyclohydrolase activities and a larger C-terminal part containing formyl-THF synthetase activity.
Cellular localization	Cytoplasm.

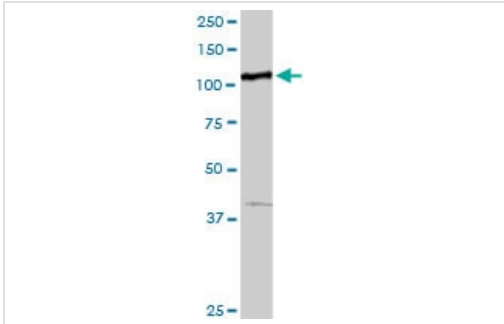
Images



Western blot - Anti-MTHFD1 antibody (ab103698)

Anti-MTHFD1 antibody (ab103698) at 5 µg/ml + Human liver tissue lysate at 50 µg

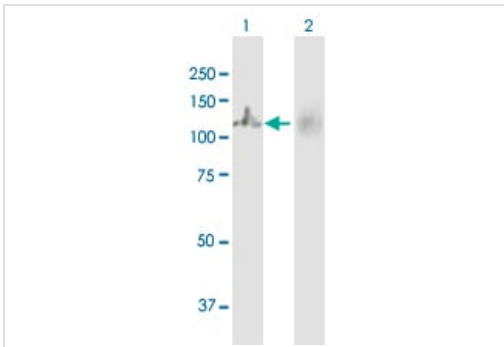
Predicted band size: 102 kDa



Western blot - Anti-MTHFD1 antibody (ab103698)

Anti-MTHFD1 antibody (ab103698) at 5 µg/ml + Mouse liver tissue lysate at 50 µg

Predicted band size: 102 kDa



Western blot - Anti-MTHFD1 antibody (ab103698)

All lanes : Anti-MTHFD1 antibody (ab103698) at 5 µg/ml

Lane 1 : MTHFD1 transfected 293T cell lysate

Lane 2 : Non-transfected 293T cell lysate

Predicted band size: 102 kDa

Please note: All products are "FOR RESEARCH USE ONLY. NOT FOR USE IN DIAGNOSTIC PROCEDURES"

Our Abpromise to you: Quality guaranteed and expert technical support

- Replacement or refund for products not performing as stated on the datasheet
- Valid for 12 months from date of delivery
- Response to your inquiry within 24 hours
- We provide support in Chinese, English, French, German, Japanese and Spanish
- Extensive multi-media technical resources to help you
- We investigate all quality concerns to ensure our products perform to the highest standards

If the product does not perform as described on this datasheet, we will offer a refund or replacement. For full details of the Abpromise,

please visit <https://www.abcam.com/abpromise> or contact our technical team.

Terms and conditions

- Guarantee only valid for products bought direct from Abcam or one of our authorized distributors