




Product datasheet

Anti-MTX2 antibody ab234783

3 Images

Overview

Product name	Anti-MTX2 antibody
Description	Rabbit polyclonal to MTX2
Host species	Rabbit
Tested applications	Suitable for: ICC/IF, IHC-P
Species reactivity	Reacts with: Human Predicted to work with: Mouse, Pig 
Immunogen	Recombinant full length protein corresponding to Human MTX2 aa 1-263. Sequence: MSLVAEAFVSQIAAAEPWPENATLYQQLKGEQILLSDNAA SLAVQAFLQM CNLPIKVVCRANAEMYSPSGKVPFIHVGNQVVSELGPIVQ FVKAKGHSL DGLEEVQKAEMKAYMELVNNMLLTAELYLQWCDEATVG EITHARYGSPYP WPLNHILAYQKQWEVKRKMKAIGWGKKTLDQVLEDVDQC CQALSQRLGTQ PYFFNKQPTELDALVFGHLYTILTTQLTNDELSEKVKNY S NLLAFCRRIEQHYFEDRGKGRLS Database link: O75431  Run BLAST with  Run BLAST with
Positive control	IHC-P: Human kidney and heart tissues. ICC/IF: HepG2 cells.
General notes	Reproducibility is key to advancing scientific discovery and accelerating scientists' next breakthrough. Abcam is leading the way with our range of recombinant antibodies, knockout-validated antibodies and knockout cell lines, all of which support improved reproducibility. We are also planning to innovate the way in which we present recommended applications and species on our product datasheets, so that only applications & species that have been tested in our own labs, our suppliers or by selected trusted collaborators are covered by our Abpromise™ guarantee. In preparation for this, we have started to update the applications & species that this product is Abpromise guaranteed for.

We are also updating the applications & species that this product has been “predicted to work with,” however this information is not covered by our Abpromise guarantee.

Applications & species from publications and Abreviews that have not been tested in our own labs or in those of our suppliers are not covered by the Abpromise guarantee.

Please check that this product meets your needs before purchasing. If you have any questions, special requirements or concerns, please send us an inquiry and/or contact our Support team ahead of purchase. Recommended alternatives for this product can be found below, as well as customer reviews and Q&As.

Properties

Form	Liquid
Storage instructions	Shipped at 4°C. Store at +4°C short term (1-2 weeks). Upon delivery aliquot. Store at -20°C long term. Avoid freeze / thaw cycle.
Storage buffer	pH: 7.30 Preservative: 0.05% Sodium azide Constituents: PBS, 50% Glycerol (glycerin, glycerine)
Purity	Immunogen affinity purified
Clonality	Polyclonal
Isotype	IgG

Applications

Our [Abpromise guarantee](#) covers the use of **ab234783** in the following tested applications.

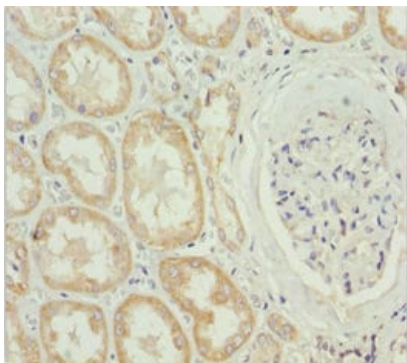
The application notes include recommended starting dilutions; optimal dilutions/concentrations should be determined by the end user.

Application	Abreviews	Notes
ICC/IF		1/50 - 1/200.
IHC-P		1/20 - 1/200.

Target

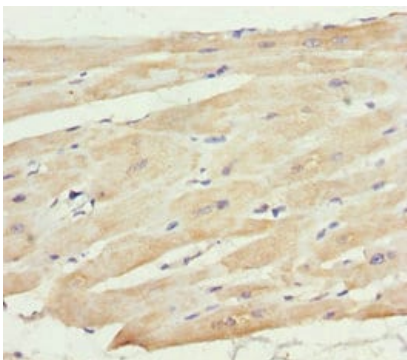
Function	Involved in transport of proteins into the mitochondrion.
Sequence similarities	Belongs to the metaxin family.
Cellular localization	Mitochondrion outer membrane.

Images



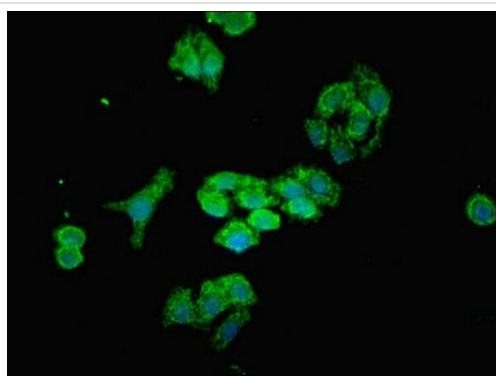
Immunohistochemistry (Formalin/PFA-fixed paraffin-embedded sections) - Anti-MTX2 antibody (ab234783)

Paraffin-embedded human kidney tissue stained for MTX2 using ab234783 at 1/100 dilution in immunohistochemical analysis.



Immunohistochemistry (Formalin/PFA-fixed paraffin-embedded sections) - Anti-MTX2 antibody (ab234783)

Paraffin-embedded human heart tissue stained for MTX2 using ab234783 at 1/100 dilution in immunohistochemical analysis.



Immunocytochemistry/ Immunofluorescence - Anti-MTX2 antibody (ab234783)

HepG2 (human liver hepatocellular carcinoma cell line) cells labeling MTX2 using ab234783 at 1/100 dilution in ICC/IF, followed by Alexa Fluor 488[®] conjugated Goat Anti-Rabbit IgG (H+L).

Our Abpromise to you: Quality guaranteed and expert technical support

- Replacement or refund for products not performing as stated on the datasheet
- Valid for 12 months from date of delivery
- Response to your inquiry within 24 hours

- We provide support in Chinese, English, French, German, Japanese and Spanish
- Extensive multi-media technical resources to help you
- We investigate all quality concerns to ensure our products perform to the highest standards

If the product does not perform as described on this datasheet, we will offer a refund or replacement. For full details of the Abpromise, please visit <https://www.abcam.com/abpromise> or contact our technical team.

Terms and conditions

- Guarantee only valid for products bought direct from Abcam or one of our authorized distributors