



Product datasheet

Anti-Multicilin antibody ab222845

1 Image

Overview

Product name	Anti-Multicilin antibody
Description	Rabbit polyclonal to Multicilin
Host species	Rabbit
Tested applications	Suitable for: IHC-P
Species reactivity	Reacts with: Human
Immunogen	<p>Recombinant fragment corresponding to Human Multicilin aa 3-110. Sequence:</p> <p>ACGGGAAGRRAFD SICPNRMLALPGRALLCKPGKPE RKFAPPRKFFPGCT GGSPVSVYEDPPDAEPTALPALTTIDLQDLADCSSLLG SDAPPGDLAAS QNHSHQTE</p> <p>Database link: D6RGH6</p> <p style="text-align: right;">  Run BLAST with  Run BLAST with </p>
Positive control	IHC-P: Human prostate cancer tissue.

Properties

Form	Liquid
Storage instructions	Shipped at 4°C. Store at +4°C short term (1-2 weeks). Upon delivery aliquot. Store at -20°C long term. Avoid freeze / thaw cycle.
Storage buffer	<p>Preservative: 0.03% Proclin Constituents: 50% Glycerol, PBS</p>
Purity	Protein G purified
Purification notes	Purity >95%
Clonality	Polyclonal
Isotype	IgG

Applications

Our [Abpromise guarantee](#) covers the use of **ab222845** in the following tested applications.

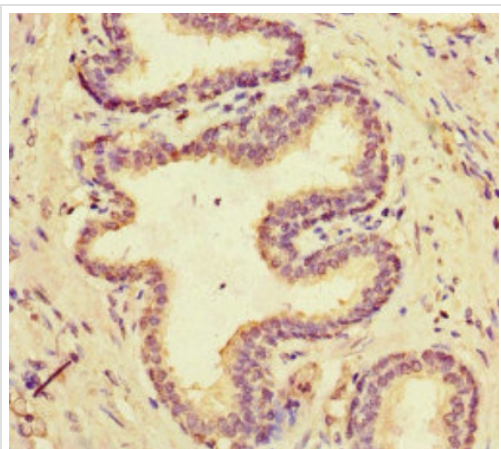
The application notes include recommended starting dilutions; optimal dilutions/concentrations should be determined by the end user.

Application	Abreviews	Notes
IHC-P		1/20 - 1/200.

Target

Function	Transcription regulator required for multiciliate cell differentiation. Acts by promoting transcription of genes required for multiciliate cell formation. Probably acts in a multiprotein complex (By similarity). Plays a role in mitotic cell cycle progression by promoting cell cycle exit.
Sequence similarities	Belongs to the geminin family.
Developmental stage	Probable target of the anaphase promoting complex/cyclosome (APC/C) which regulates its level in the cell during the mitotic cell cycle. Highly expressed during interphase and early mitosis. Expression decreases during anaphase to become undetectable during telophase and cytokinesis.
Cellular localization	Nucleus. Excluded from the nucleolus.

Images



Paraffin embedded human prostate cancer tissue stained for Multicilin with ab222845 at a 1/100 dilution.

Immunohistochemistry (Formalin/PFA-fixed paraffin-embedded sections) - Anti-Multicilin antibody (ab222845)

Please note: All products are "FOR RESEARCH USE ONLY. NOT FOR USE IN DIAGNOSTIC PROCEDURES"

Our Abpromise to you: Quality guaranteed and expert technical support

- Replacement or refund for products not performing as stated on the datasheet
- Valid for 12 months from date of delivery
- Response to your inquiry within 24 hours

- We provide support in Chinese, English, French, German, Japanese and Spanish
- Extensive multi-media technical resources to help you
- We investigate all quality concerns to ensure our products perform to the highest standards

If the product does not perform as described on this datasheet, we will offer a refund or replacement. For full details of the Abpromise, please visit <https://www.abcam.com/abpromise> or contact our technical team.

Terms and conditions

- Guarantee only valid for products bought direct from Abcam or one of our authorized distributors