

Product datasheet

Anti-Myelin expression factor 2 antibody [EPR10775(B)] ab176335

Recombinant RabMAb

5 Images

Overview

Product name	Anti-Myelin expression factor 2 antibody [EPR10775(B)]
Description	Rabbit monoclonal [EPR10775(B)] to Myelin expression factor 2
Host species	Rabbit
Tested applications	Suitable for: IHC-P, WB, ICC/IF Unsuitable for: Flow Cyt or IP
Species reactivity	Reacts with: Mouse, Rat, Human
Immunogen	Synthetic peptide (the amino acid sequence is considered to be commercially sensitive) within Human Myelin expression factor 2 aa 550 to the C-terminus (Cysteine residue). The exact sequence is proprietary. Database link: Q9P2K5
Positive control	SH-SY5Y, Jurkat, MCF-7, Raw 264.7, fetal brain and fetal liver lysates. Paraffin-embedded Human brain and Human testis tissue. SH-SY5Y cells.
General notes	<p>This product is a recombinant monoclonal antibody, which offers several advantages including:</p> <ul style="list-style-type: none"> - High batch-to-batch consistency and reproducibility - Improved sensitivity and specificity - Long-term security of supply - Animal-free production <p>For more information see here.</p> <p>Our RabMAb[®] technology is a patented hybridoma-based technology for making rabbit monoclonal antibodies. For details on our patents, please refer to RabMAb[®] patents.</p> <p>Reproducibility is key to advancing scientific discovery and accelerating scientists' next breakthrough.</p> <p>Abcam is leading the way with our range of recombinant antibodies, knockout-validated antibodies and knockout cell lines, all of which support improved reproducibility.</p> <p>We are also planning to innovate the way in which we present recommended applications and species on our product datasheets, so that only applications & species that have been tested in our own labs, our suppliers or by selected trusted collaborators are covered by our Abpromise[™] guarantee.</p> <p>In preparation for this, we have started to update the applications & species that this product is</p>

Abpromise guaranteed for.

We are also updating the applications & species that this product has been “predicted to work with,” however this information is not covered by our Abpromise guarantee.

Applications & species from publications and Abreviews that have not been tested in our own labs or in those of our suppliers are not covered by the Abpromise guarantee.

Please check that this product meets your needs before purchasing. If you have any questions, special requirements or concerns, please send us an inquiry and/or contact our Support team ahead of purchase. Recommended alternatives for this product can be found below, as well as customer reviews and Q&As.

Properties

Form	Liquid
Storage instructions	Shipped at 4°C. Store at +4°C short term (1-2 weeks). Upon delivery aliquot. Store at -20°C long term. Avoid freeze / thaw cycle.
Storage buffer	pH: 7.20 Preservative: 0.01% Sodium azide Constituents: 9% PBS, 40% Glycerol (glycerin, glycerine), 0.05% BSA, 50% Tissue culture supernatant
Purity	Tissue culture supernatant
Clonality	Monoclonal
Clone number	EPR10775(B)
Isotype	IgG

Applications

Our [Abpromise guarantee](#) covers the use of **ab176335** in the following tested applications.

The application notes include recommended starting dilutions; optimal dilutions/concentrations should be determined by the end user.

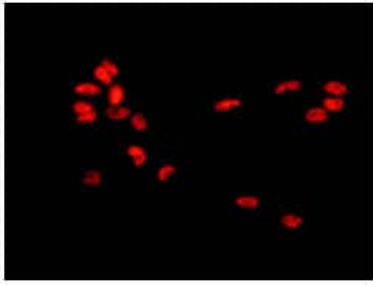
Application	Abreviews	Notes
IHC-P		1/250 - 1/500. Perform heat mediated antigen retrieval with citrate buffer pH 6 before commencing with IHC staining protocol.
WB		1/1000 - 1/5000. Predicted molecular weight: 64 kDa.
ICC/IF		1/100 - 1/250.

Application notes Is unsuitable for Flow Cyt or IP.

Target

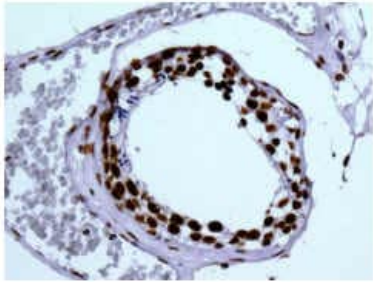
Relevance Myelin expression factor 2 (MEF2) is expressed early in the differentiation program and is suppressed by specific polypeptide growth factors. The ability of MEF2 to recognize conserved activating elements associated with multiple specific genes suggests that this factor may participate in the coordinate regulation of genes during myogenesis.

Images



Immunocytochemistry/ Immunofluorescence - Anti-Myelin expression factor 2 antibody [EPR10775(B)] (ab176335)

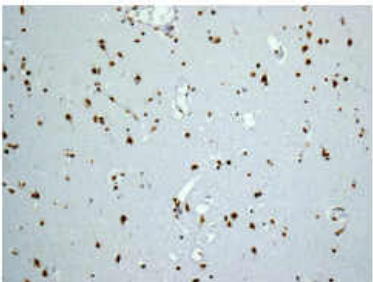
Immunofluorescent analysis of SH-SY5Y cells labeling Myelin expression factor 2 with ab176335 at 1/100 dilution.



Immunohistochemistry (Formalin/PFA-fixed paraffin-embedded sections) - Anti-Myelin expression factor 2 antibody [EPR10775(B)] (ab176335)

Immunohistochemical analysis of paraffin-embedded Human testis tissue labeling Myelin expression factor 2 with ab176335 at 1/250 dilution.

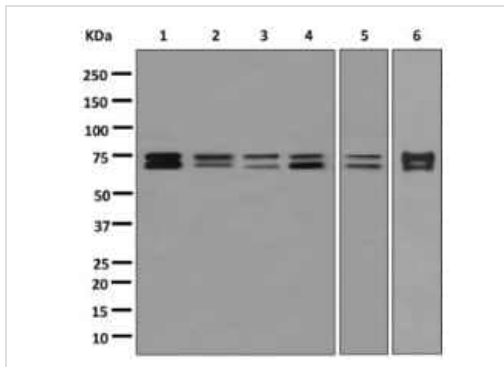
Perform heat mediated antigen retrieval with citrate buffer pH 6 before commencing with IHC staining protocol.



Immunohistochemistry (Formalin/PFA-fixed paraffin-embedded sections) - Anti-Myelin expression factor 2 antibody [EPR10775(B)] (ab176335)

Immunohistochemical analysis of paraffin-embedded Human brain tissue labeling Myelin expression factor 2 with ab176335 at 1/250 dilution.

Perform heat mediated antigen retrieval with citrate buffer pH 6 before commencing with IHC staining protocol.



Western blot - Anti-Myelin expression factor 2 antibody [EPR10775(B)] (ab176335)

All lanes : Anti-Myelin expression factor 2 antibody [EPR10775(B)] (ab176335) at 1/1000 dilution

Lane 1 : SH-SY5Y cell lysate

Lane 2 : Jurkat cell lysate

Lane 3 : MCF7 lysate

Lane 4 : fetal brain lysate

Lane 5 : fetal liver lysate

Lane 6 : Raw 264.7 lysate

Lysates/proteins at 10 µg per lane.

Predicted band size: 64 kDa

Why choose a recombinant antibody?

Research with confidence
Consistent and reproducible results

Long-term and scalable supply
Recombinant technology

Success from the first experiment
Confirmed specificity

Ethical standards compliant
Animal-free production

Anti-Myelin expression factor 2 antibody [EPR10775(B)] (ab176335)

Please note: All products are "FOR RESEARCH USE ONLY. NOT FOR USE IN DIAGNOSTIC PROCEDURES"

Our Abpromise to you: Quality guaranteed and expert technical support

- Replacement or refund for products not performing as stated on the datasheet
- Valid for 12 months from date of delivery
- Response to your inquiry within 24 hours
- We provide support in Chinese, English, French, German, Japanese and Spanish
- Extensive multi-media technical resources to help you
- We investigate all quality concerns to ensure our products perform to the highest standards

If the product does not perform as described on this datasheet, we will offer a refund or replacement. For full details of the Abpromise, please visit <https://www.abcam.com/abpromise> or contact our technical team.

Terms and conditions

- Guarantee only valid for products bought direct from Abcam or one of our authorized distributors