


Product datasheet

Anti-Myelin PLP antibody ab28486

★★★★★ 12 Abreviews 27 References 4 Images

Overview

Product name	Anti-Myelin PLP antibody
Description	Rabbit polyclonal to Myelin PLP
Host species	Rabbit
Specificity	ab28486 recognises PLP
Tested applications	Suitable for: ELISA, WB, ICC, IHC-FoFr, ICC/IF, IHC-P, IHC-Fr, Flow Cyt
Species reactivity	Reacts with: Mouse, Rat, Rabbit, Human Predicted to work with: Cow, Dog, Pig, Macaque monkey 
Immunogen	Synthetic peptide: CG KGLSATVTGG QKGRGSRG , corresponding to amino acids 109-128 of Mouse Myelin PLP Run BLAST with Run BLAST with
Positive control	Mouse brain

Properties

Form	Liquid
Storage instructions	Shipped at 4°C. Upon delivery aliquot and store at -20°C. Avoid freeze / thaw cycles.
Storage buffer	Preservative: 0.05% Sodium azide Constituent: Whole serum
Purity	Whole antiserum
Clonality	Polyclonal
Isotype	IgG

Applications

Our [Abpromise guarantee](#) covers the use of **ab28486** in the following tested applications.

The application notes include recommended starting dilutions; optimal dilutions/concentrations should be determined by the end user.

Application	Abreviews	Notes
ELISA	★★★★★	1/10000.
WB	★★★★☆	1/1000. Predicted molecular weight: 26,30 kDa.
ICC		1/1000.
IHC-FoFr	★★★★★	1/100.
ICC/IF	★★★★★	1/100.
IHC-P	★★★★★	Use at an assay dependent concentration.
IHC-Fr	★★★★★	1/500.
Flow Cyt		Use at an assay dependent concentration. PubMed: 19659692 ab171870 - Rabbit polyclonal IgG, is suitable for use as an isotype control with this antibody.

Target

Function

This is the major myelin protein from the central nervous system. It plays an important role in the formation or maintenance of the multilamellar structure of myelin.

Involvement in disease

Defects in PLP1 are the cause of leukodystrophy hypomyelinating type 1 (HLD1) [MIM:312080]; also known as Pelizaeus-Merzbacher disease. HLD1 is an X-linked recessive dysmyelinating disorder of the central nervous system in which myelin is not formed properly. It is characterized clinically by nystagmus, spastic quadriplegia, ataxia, and developmental delay.

Defects in PLP1 are the cause of spastic paraplegia X-linked type 2 (SPG2) [MIM:312920]. SPG2 is characterized by spastic gait and hyperreflexia. In some patients, complicating features include nystagmus, dysarthria, sensory disturbance, mental retardation, optic atrophy.

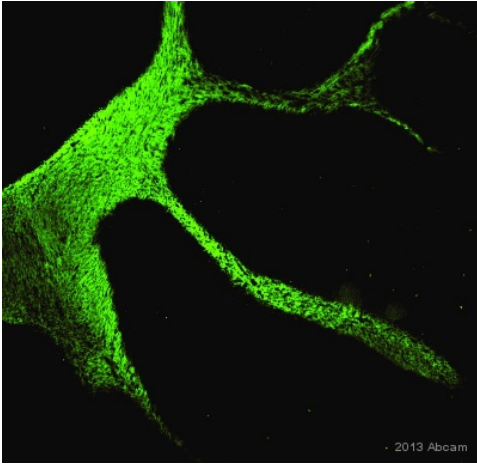
Sequence similarities

Belongs to the myelin proteolipid protein family.

Cellular localization

Membrane.

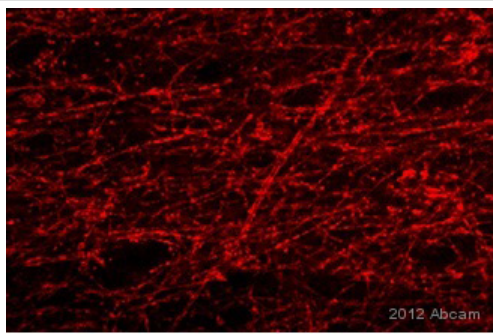
Images



Immunohistochemistry (PFA perfusion fixed frozen sections) - Anti-Myelin PLP antibody (ab28486)

This image is courtesy of an Abreview submitted by Nagendra Rai Nagendra

ab28486 staining Myelin PLP in Rabbit brain tissue sections by Immunohistochemistry (PFA perfusion fixed frozen sections). Tissue samples were fixed by perfusion with methanol, permeablized with acetone and blocked with 5% BSA for 1 hour at 37°C. The sample was incubated with primary antibody (1/100) at 4°C for 18 hours. An Alexa Fluor®488-conjugated Goat anti-rabbit polyclonal (1/200) was used as the secondary antibody.

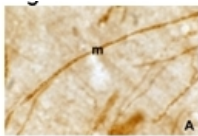


Immunocytochemistry/ Immunofluorescence - Anti-Myelin PLP antibody (ab28486)

This image is courtesy of an Abreview submitted by Dr Rachel Barker

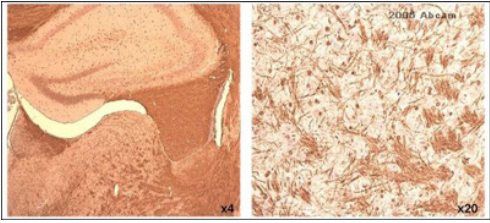
Immunofluorescence analysis of Human brain cells, staining Myelin PLP with ab28486.

Cells were fixed with formaldehyde and blocked with 10% serum for 20 minutes at room temperature. Samples were incubated with primary antibody (1/400 in diluent) for 16 hours. An AlexaFluor®555-conjugated donkey anti-rabbit polyclonal IgG (1/1000) was used as the secondary antibody.



Immunohistochemistry (Formalin/PFA-fixed paraffin-embedded sections) - Anti-Myelin PLP antibody (ab28486)

Immunohistochemical staining of Myelin PLP in mouse brain thick section using ab28486 (1/1000 dilution). Staining (m) is limited to myelin tracts and oligodendrocytes.



Immunohistochemistry (Formalin/PFA-fixed paraffin-embedded sections) - Anti-Myelin PLP antibody (ab28486)

This image is courtesy of an anonymous Abreview

ab28486 at a 1/1000 dilution staining mouse brain (white matter) by IHC-P. The tissue was fixed in 10% formalin saline. Antigen retrieval was via hydrated autoclaving at 121°C for 15 minutes followed by 5 minutes in 98% formic acid. The antibody was incubated with the tissue for 16 hours and then bound antibody was detected using a biotinylated goat anti-rabbit IgG Fc.

Please note: All products are "FOR RESEARCH USE ONLY AND ARE NOT INTENDED FOR DIAGNOSTIC OR THERAPEUTIC USE"

Our Abpromise to you: Quality guaranteed and expert technical support

- Replacement or refund for products not performing as stated on the datasheet
- Valid for 12 months from date of delivery
- Response to your inquiry within 24 hours
- We provide support in Chinese, English, French, German, Japanese and Spanish
- Extensive multi-media technical resources to help you
- We investigate all quality concerns to ensure our products perform to the highest standards

If the product does not perform as described on this datasheet, we will offer a refund or replacement. For full details of the Abpromise, please visit <https://www.abcam.com/abpromise> or contact our technical team.

Terms and conditions

- Guarantee only valid for products bought direct from Abcam or one of our authorized distributors