

## Product datasheet

# Anti-Myosin 18B antibody ab121125

[1 References](#) [2 Images](#)

### Overview

---

<b>Product name</b>	Anti-Myosin 18B antibody
<b>Description</b>	Rabbit polyclonal to Myosin 18B
<b>Host species</b>	Rabbit
<b>Tested applications</b>	<b>Suitable for:</b> IHC-P, ICC/IF
<b>Species reactivity</b>	<b>Reacts with:</b> Human
<b>Immunogen</b>	Recombinant fragment, corresponding to amino acids 2420-2564 of Human (Q8IUG5). <a href="#">Run BLAST with ExPASy</a> <a href="#">Run BLAST with NCBI</a>
<b>Positive control</b>	Human kidney tissue, A431 cells
<b>General notes</b>	<p>Reproducibility is key to advancing scientific discovery and accelerating scientists' next breakthrough.</p> <p>Abcam is leading the way with our range of recombinant antibodies, knockout-validated antibodies and knockout cell lines, all of which support improved reproducibility.</p> <p>We are also planning to innovate the way in which we present recommended applications and species on our product datasheets, so that only applications &amp; species that have been tested in our own labs, our suppliers or by selected trusted collaborators are covered by our Abpromise™ guarantee.</p> <p>In preparation for this, we have started to update the applications &amp; species that this product is Abpromise guaranteed for.</p> <p>We are also updating the applications &amp; species that this product has been “predicted to work with,” however this information is not covered by our Abpromise guarantee.</p> <p>Applications &amp; species from publications and Abreviews that have not been tested in our own labs or in those of our suppliers are not covered by the Abpromise guarantee.</p> <p>Please check that this product meets your needs before purchasing. If you have any questions, special requirements or concerns, please send us an inquiry and/or contact our Support team ahead of purchase. Recommended alternatives for this product can be found below, as well as customer reviews and Q&amp;As.</p>

### Properties

---

<b>Form</b>	Liquid
<b>Storage instructions</b>	Shipped at 4°C. Upon delivery aliquot and store at -20°C. Avoid freeze / thaw cycles.

<b>Storage buffer</b>	pH: 7.20 Preservative: 0.02% Sodium azide Constituents: 59% PBS, 40% Glycerol (glycerin, glycerine)
<b>Purity</b>	Immunogen affinity purified
<b>Clonality</b>	Polyclonal
<b>Isotype</b>	IgG

## Applications

Our [Abpromise guarantee](#) covers the use of **ab121125** in the following tested applications.

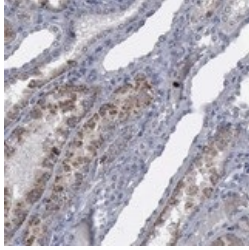
The application notes include recommended starting dilutions; optimal dilutions/concentrations should be determined by the end user.

Application	Abreviews	Notes
IHC-P		1/20 - 1/50. Perform heat mediated antigen retrieval with citrate buffer pH 6 before commencing with IHC staining protocol. Use buffer at pH 6 for antigen retrieval.
ICC/IF		Use a concentration of 0.25 - 2 µg/ml.

## Target

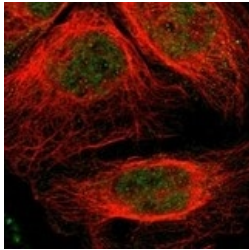
<b>Function</b>	May be involved in intracellular trafficking of the muscle cell when in the cytoplasm, whereas entering the nucleus, may be involved in the regulation of muscle specific genes. May play a role in the control of tumor development and progression; restored MYO18B expression in lung cancer cells suppresses anchorage-independent growth.
<b>Tissue specificity</b>	Selectively expressed in cardiac and skeletal muscles. Weakly expressed in testis, pancreas, placenta, prostate, lung and thymus.
<b>Sequence similarities</b>	Contains 1 IQ domain. Contains 1 myosin head-like domain.
<b>Developmental stage</b>	Reaches an expression peak in the third day after induction and remains at similar level during successive myotubule maturation.
<b>Cellular localization</b>	Cytoplasm. Nucleus. Cytoplasm > myofibril > sarcomere. Punctate pattern in undifferentiated myoblasts. Nuclear, on primary cardiomyocytes and adult muscle. A partial sarcomeric location was found in some cardiomyocytes.

## Images



Immunohistochemistry (Formalin/PFA-fixed paraffin-embedded sections) - Anti-Myosin 18B antibody (ab121125)

ab121125 at 1/10 dilution staining Myosin 18B in Paraffin-embedded Human kidney tissue by Immunohistochemistry. Note: moderate cytoplasmic positivity in renal tubules.



Immunocytochemistry/ Immunofluorescence - Anti-Myosin 18B antibody (ab121125)

Immunofluorescent staining of human cell line A431 using ab121125 at a concentration of 4 µg/ml. Note: shows positivity in nucleus but not nucleoli & cytoplasm.

**Please note:** All products are "FOR RESEARCH USE ONLY. NOT FOR USE IN DIAGNOSTIC PROCEDURES"

### Our Abpromise to you: Quality guaranteed and expert technical support

---

- Replacement or refund for products not performing as stated on the datasheet
- Valid for 12 months from date of delivery
- Response to your inquiry within 24 hours
- We provide support in Chinese, English, French, German, Japanese and Spanish
- Extensive multi-media technical resources to help you
- We investigate all quality concerns to ensure our products perform to the highest standards

If the product does not perform as described on this datasheet, we will offer a refund or replacement. For full details of the Abpromise, please visit <https://www.abcam.com/abpromise> or contact our technical team.

### Terms and conditions

---

- Guarantee only valid for products bought direct from Abcam or one of our authorized distributors