


Product datasheet

Anti-Myosin Phosphatase 2 antibody ab168988

1 Image

Overview

Product name	Anti-Myosin Phosphatase 2 antibody
Description	Mouse polyclonal to Myosin Phosphatase 2
Host species	Mouse
Tested applications	Suitable for: WB
Species reactivity	Reacts with: Human Predicted to work with: Mouse 
Immunogen	Recombinant full length protein within Human Myosin Phosphatase 2 aa 1-400. The exact immunogen sequence used to generate this antibody is proprietary information. If additional detail on the immunogen is needed to determine the suitability of the antibody for your needs, please contact our Scientific Support team to discuss your requirements. Run BLAST with Run BLAST with
Positive control	Myosin Phosphatase 2 transfected 293T cell lysate.
General notes	The Life Science industry has been in the grips of a reproducibility crisis for a number of years. Abcam is leading the way in addressing this with our range of recombinant monoclonal antibodies and knockout edited cell lines for gold-standard validation. Please check that this product meets your needs before purchasing. If you have any questions, special requirements or concerns, please send us an inquiry and/or contact our Support team ahead of purchase. Recommended alternatives for this product can be found below, along with publications, customer reviews and Q&As

Properties

Form	Liquid
Storage instructions	Shipped at 4°C. Store at +4°C short term (1-2 weeks). Upon delivery aliquot. Store at -20°C or -80°C. Avoid freeze / thaw cycle.
Storage buffer	pH: 7.4 Constituent: 99% PBS
Purity	Protein A purified
Clonality	Polyclonal
Isotype	IgG

Applications

The Abpromise guarantee

Our [Abpromise guarantee](#) covers the use of ab168988 in the following tested applications.

The application notes include recommended starting dilutions; optimal dilutions/concentrations should be determined by the end user.

Application	Abreviews	Notes
WB		Use a concentration of 1 µg/ml. Predicted molecular weight: 43 kDa.

Target

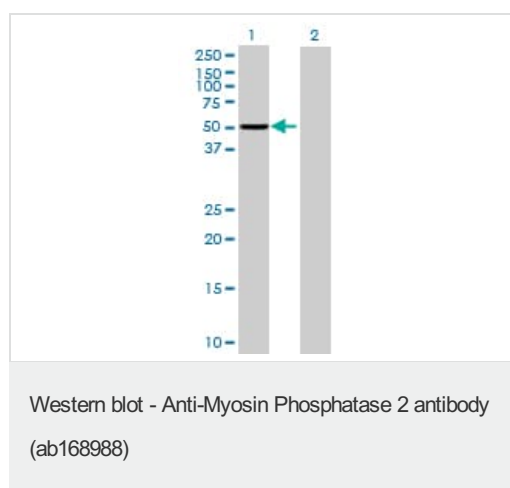
Relevance

Myosin light chain phosphatase (MLCP) consists of three subunits- catalytic subunit, large subunit/myosin binding subunit (MBS) and small subunit (sm-M20). This gene is a multi-functional gene which encodes both MBS and sm-M20. MLCP regulates myosins and the dephosphorylation is enhanced by the presence of MBS. The sm-M20 is suggested to play a regulatory role in muscle contraction by binding to MBS. MBS is also encoded by another gene, myosin light chain phosphatase target subunit 1. sm-M20 shows higher binding affinity to this gene product than to myosin light chain phosphatase target subunit 2-MBS even though the two MBS proteins are highly similar. Although both MBSs increase the activity of MLCP, myosin light chain phosphatase target subunit 1-MBS is a more efficient activator. There are four alternatively spliced transcript variants described; two alter the MBS coding region and two alter the sm-M20 coding region of this gene.

Cellular localization

Cytoplasmic

Images



All lanes : Anti-Myosin Phosphatase 2 antibody (ab168988) at 1 µg/ml

Lane 1 : Myosin Phosphatase 2 transfected 293T cell lysate

Lane 2 : Non-transfected 293T cell lysate

Lysates/proteins at 15 µl per lane.

Secondary

All lanes : Goat Anti-Mouse IgG (H&L)-HRP at 1/2500 dilution

Developed using the ECL technique.

Predicted band size: 43 kDa

Please note: All products are "FOR RESEARCH USE ONLY. NOT FOR USE IN DIAGNOSTIC PROCEDURES"

Our Abpromise to you: Quality guaranteed and expert technical support

- Replacement or refund for products not performing as stated on the datasheet
- Valid for 12 months from date of delivery
- Response to your inquiry within 24 hours

- We provide support in Chinese, English, French, German, Japanese and Spanish
- Extensive multi-media technical resources to help you
- We investigate all quality concerns to ensure our products perform to the highest standards

If the product does not perform as described on this datasheet, we will offer a refund or replacement. For full details of the Abpromise, please visit <https://www.abcam.com/abpromise> or contact our technical team.

Terms and conditions

- Guarantee only valid for products bought direct from Abcam or one of our authorized distributors