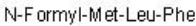


Product datasheet

N-Formyl-Met-Leu-Phe, endogenous chemotactic peptide ab141806

1 References 2 Images

Overview

Product name	N-Formyl-Met-Leu-Phe, endogenous chemotactic peptide
Description	Potent endogenous chemotactic peptide
Biological description	Potent endogenous chemotactic peptide and agonist for the formyl peptide receptor 1 (FPR1) ($K_i = 38 \text{ nM}$). Chemoattractant for phagocytic leukocytes. Stimulates random and directed locomotion. Inducer of superoxide release. Active <i>in vitro</i> .
Purity	> 98%
CAS Number	59880-97-6
Chemical structure	

Properties

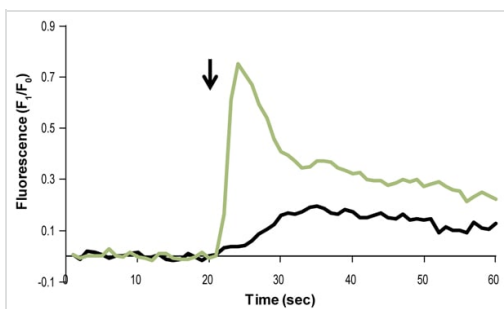
Molecular weight	437.55
Molecular formula	$C_{21}H_{31}N_3O_5S$
Sequence	MLF (Modifications: N-terminal formyl)
PubChem identifier	443295
Storage instructions	Store at -20°C . Store under desiccating conditions. The product can be stored for up to 12 months.
Solubility overview	Soluble in ethanol to 5 mM and in DMSO to 100 mM
Handling	Wherever possible, you should prepare and use solutions on the same day. However, if you need to make up stock solutions in advance, we recommend that you store the solution as aliquots in tightly sealed vials at -20°C . Generally, these will be useable for up to one week. Before use, and prior to opening the vial we recommend that you allow your product to equilibrate to room temperature for at least 1 hour. Need more advice on solubility, usage and handling? Please visit our frequently asked questions (FAQ) page for more details.
SMILES	<chem>CC(C)CC(C(=O)NC(CC1=CC=CC=C1)C(=O)O)NC(=O)C(CCSC)NC=O</chem>
Source	Synthetic

Images

N-Formyl-Met-Leu-Phe

Chemical Structure - N-Formyl-Met-Leu-Phe, endogenous chemotactic peptide (ab141806)

2D chemical structure image of ab141806, N-Formyl-Met-Leu-Phe, endogenous chemotactic peptide



Functional Studies - N-Formyl-Met-Leu-Phe, endogenous chemotactic peptide (ab141806)

N-Formyl-Met-Leu-Phe activates Ca²⁺ transients in differentiated HL-60 cells.

Cells were loaded with Fluo-3 AM (ab145254). Changes in intracellular Ca²⁺ were detected via changes in Fluo-3 emission following application (indicated by arrow) of 1 μM N-Formyl-Met-Leu-Phe (ab141806), (green) compared to control (black, saline perfusion).

Please note: All products are "FOR RESEARCH USE ONLY. NOT FOR USE IN DIAGNOSTIC PROCEDURES, NOT FOR USE IN HUMANS"

Our Abpromise to you: Quality guaranteed and expert technical support

- Replacement or refund for products not performing as stated on the datasheet
- Valid for 12 months from date of delivery
- Response to your inquiry within 24 hours
- We provide support in Chinese, English, French, German, Japanese and Spanish
- Extensive multi-media technical resources to help you
- We investigate all quality concerns to ensure our products perform to the highest standards

If the product does not perform as described on this datasheet, we will offer a refund or replacement. For full details of the Abpromise, please visit <https://www.abcam.com/abpromise> or contact our technical team.

Terms and conditions

- Guarantee only valid for products bought direct from Abcam or one of our authorized distributors
- Abcam biochemicals are novel compounds and we have not tested their biological activity in house. Please use the literature to identify how to use these products effectively. If you require further assistance please contact the scientific support team