




Product datasheet

Anti-N4BP1 antibody ab197079

2 Images

Overview

Product name	Anti-N4BP1 antibody
Description	Rabbit polyclonal to N4BP1
Host species	Rabbit
Tested applications	Suitable for: IP, WB
Species reactivity	Reacts with: Human Predicted to work with: Mouse, Sheep, Rabbit, Horse, Cow, Dog, Pig, Chimpanzee, Gorilla, Orangutan 
Immunogen	Synthetic peptide within Human N4BP1 aa 250-300. The exact sequence is proprietary. (NP_694574.3). Sequence: QMDTVLSSSPDVLFDPIINGLTPDEEALSNERICQKRRF SDSEERHTKKQF S Database link: O75113  Run BLAST with  Run BLAST with
Positive control	HeLa, Jurkat and 293T whole cell lysates.

Properties

Form	Liquid
Storage instructions	Shipped at 4°C. Store at +4°C short term (1-2 weeks). Upon delivery aliquot. Store at -20°C long term. Avoid freeze / thaw cycle.
Storage buffer	Preservative: 0.09% Sodium azide Constituent: 99% Tris citrate/phosphate pH 7 to 8
Purity	Immunogen affinity purified
Purification notes	ab197079 was affinity purified using an epitope specific to N4BP1 immobilized on solid support
Clonality	Polyclonal
Isotype	IgG

Applications

Our [Abpromise guarantee](#) covers the use of **ab197079** in the following tested applications.

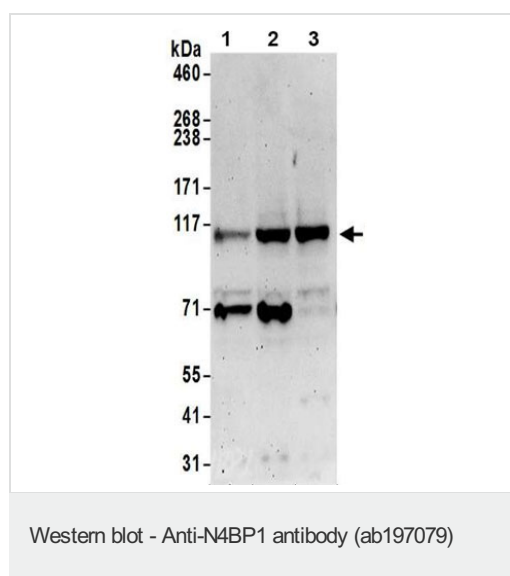
The application notes include recommended starting dilutions; optimal dilutions/concentrations should be determined by the end user.

Application	Abreviews	Notes
IP		Use at 2-10 µg/mg of lysate.
WB		1/2000 - 1/10000. Predicted molecular weight: 100 kDa.

Target

Function	Inhibitor of the E3 ubiquitin-protein ligase ITCH. Acts by interacting with the second WW domain of ITCH, leading to compete with ITCH's substrates and impairing ubiquitination of substrates.
Tissue specificity	Detected in heart, lung, brain, liver, skeletal muscle, pancreas, kidney, spleen, testis and ovary.
Sequence similarities	Belongs to the N4BP1 family.
Post-translational modifications	Monoubiquitinated by NEDD4. Polyubiquitinated, leading to its degradation by the proteasome. Sumoylated by SUMO1, abrogating polyubiquitination and subsequent degradation. Desumoylated by SENP1, leading to accumulation in PML nuclear bodies. Phosphorylated upon DNA damage, probably by ATM or ATR.
Cellular localization	Nucleus > nucleolus. Nucleus > PML body. Primarily localizes to the nucleolus. Also localizes to the PML nuclear bodies, when desumoylated.

Images



All lanes : Anti-N4BP1 antibody (ab197079) at 0.1 µg/ml

Lane 1 : HeLa whole cell lysate

Lane 2 : 293T whole cell lysate

Lane 3 : Jurkat whole cell lysate

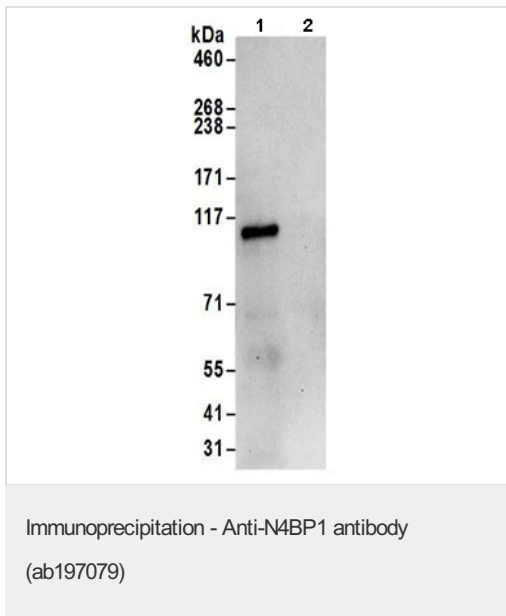
Lysates/proteins at 50 µg per lane.

Developed using the ECL technique.

Predicted band size: 100 kDa

Exposure time: 3 minutes

Lysates prepared with NETN lysis buffer.



Detection of N4BP1 in immunoprecipitates of 293T whole cell lysates prepared using NETN lysis buffer (1 mg for IP, 20% of IP loaded) using ab197079 at 6 μ g/mg lysate for IP (Lane 1) and at 1 μ g/ml for subsequent Western blot detection. Lane 2 represents control IgG IP.

Detection: Chemiluminescence with an exposure time of 30 seconds.

Please note: All products are "FOR RESEARCH USE ONLY. NOT FOR USE IN DIAGNOSTIC PROCEDURES"

Our Abpromise to you: Quality guaranteed and expert technical support

- Replacement or refund for products not performing as stated on the datasheet
- Valid for 12 months from date of delivery
- Response to your inquiry within 24 hours
- We provide support in Chinese, English, French, German, Japanese and Spanish
- Extensive multi-media technical resources to help you
- We investigate all quality concerns to ensure our products perform to the highest standards

If the product does not perform as described on this datasheet, we will offer a refund or replacement. For full details of the Abpromise, please visit <https://www.abcam.com/abpromise> or contact our technical team.

Terms and conditions

- Guarantee only valid for products bought direct from Abcam or one of our authorized distributors