


Product datasheet

Anti-NALP2 antibody ab115614

1 Image

Overview

<b>Product name</b>	Anti-NALP2 antibody
<b>Description</b>	Rabbit polyclonal to NALP2
<b>Host species</b>	Rabbit
<b>Tested applications</b>	<b>Suitable for:</b> WB, IHC-P
<b>Species reactivity</b>	<b>Reacts with:</b> Human <b>Predicted to work with:</b> Mouse, Rat 
<b>Immunogen</b>	Synthetic peptide conjugated to KLH, corresponding to 12 amino acids near the C terminus of Human NALP2 (NP_060322.1).
<b>Positive control</b>	Human Brain Cortex tissue.

Properties

<b>Form</b>	Liquid
<b>Storage instructions</b>	Shipped at 4°C. Upon delivery aliquot and store at -20°C. Avoid repeated freeze / thaw cycles.
<b>Storage buffer</b>	Preservative: 0.02% Sodium azide Constituent: 99% PBS
<b>Purity</b>	IgG fraction
<b>Clonality</b>	Polyclonal
<b>Isotype</b>	IgG

Applications

Our [Abpromise guarantee](#) covers the use of **ab115614** in the following tested applications.

The application notes include recommended starting dilutions; optimal dilutions/concentrations should be determined by the end user.

Application	Abreviews	Notes
WB		Use a concentration of 1 - 2 µg/ml. Predicted molecular weight: 121 kDa.
IHC-P		Use a concentration of 5 µg/ml. Perform heat mediated antigen retrieval with citrate buffer pH 6 before commencing with IHC staining protocol.

## Target

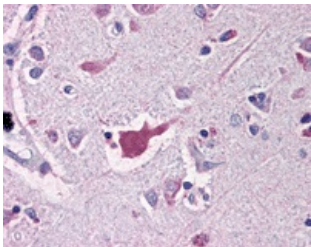
---

<b>Function</b>	Suppresses TNF- and CD40-induced NFKB1 activity at the level of the IKK complex, by inhibiting NFKBIA degradation induced by TNF. When associated with PYCARD, activates CASP1, leading to the secretion of mature proinflammatory cytokine IL1B. May be a component of the inflammasome, a protein complex which also includes PYCARD, CARD8 and CASP1 and whose function would be the activation of proinflammatory caspases.
<b>Tissue specificity</b>	Expressed at high levels in lung, placenta and thymus and at lower levels in ovary, intestine and brain.
<b>Sequence similarities</b>	Belongs to the NLRP family. Contains 1 DAPIN domain. Contains 8 LRR (leucine-rich) repeats. Contains 1 NACHT domain.
<b>Domain</b>	The DAPIN domain is necessary and sufficient for suppression of NFKB1 activation induced by TNF and for inducing IL1B secretion in collaboration with caspase-1. It is involved in interaction with PYCARD. When isolated, the NACHT domain is involved in interaction with CARD8. This interaction is not detected for the full-length protein, maybe due to autoinhibition, this inhibition might be relieved by an inducible change in protein folding.
<b>Cellular localization</b>	Cytoplasm.

---

## Images

---



ab115614, at 5µg/ml, staining NLRP2 in Formalin-fixed, Paraffin-embedded Human brain cortex tissue by Immunohistochemistry followed by biotinylated secondary antibody, alkaline phosphatase-streptavidin and chromogen.

Immunohistochemistry (Formalin/PFA-fixed paraffin-embedded sections) - Anti-NALP2 antibody (ab115614)

**Please note:** All products are "FOR RESEARCH USE ONLY. NOT FOR USE IN DIAGNOSTIC PROCEDURES"

## Our Abpromise to you: Quality guaranteed and expert technical support

---

- Replacement or refund for products not performing as stated on the datasheet
- Valid for 12 months from date of delivery
- Response to your inquiry within 24 hours
- We provide support in Chinese, English, French, German, Japanese and Spanish

- Extensive multi-media technical resources to help you
- We investigate all quality concerns to ensure our products perform to the highest standards

If the product does not perform as described on this datasheet, we will offer a refund or replacement. For full details of the Abpromise, please visit <https://www.abcam.com/abpromise> or contact our technical team.

### **Terms and conditions**

---

- Guarantee only valid for products bought direct from Abcam or one of our authorized distributors