



Product datasheet

Anti-NALP5 antibody - C-terminal ab215180

1 Image

Overview

Product name	Anti-NALP5 antibody - C-terminal
Description	Goat polyclonal to NALP5 - C-terminal
Host species	Goat
Tested applications	Suitable for: WB
Species reactivity	Reacts with: Human
Immunogen	<p>Synthetic peptide corresponding to Human NALP5 aa 1184-1195 (C terminal) (Cysteine residue). NP_703148.4</p> <p>Sequence:</p> <p>DGSWHSFDEDDR</p> <p>Database link: P59047</p> <p style="text-align: right;">  Run BLAST with  Run BLAST with </p>
Positive control	Human ovary lysate
General notes	<p>Reproducibility is key to advancing scientific discovery and accelerating scientists' next breakthrough.</p> <p>Abcam is leading the way with our range of recombinant antibodies, knockout-validated antibodies and knockout cell lines, all of which support improved reproducibility.</p> <p>We are also planning to innovate the way in which we present recommended applications and species on our product datasheets, so that only applications & species that have been tested in our own labs, our suppliers or by selected trusted collaborators are covered by our Abpromise™ guarantee.</p> <p>In preparation for this, we have started to update the applications & species that this product is Abpromise guaranteed for.</p> <p>We are also updating the applications & species that this product has been "predicted to work with," however this information is not covered by our Abpromise guarantee.</p> <p>Applications & species from publications and Abreviews that have not been tested in our own labs or in those of our suppliers are not covered by the Abpromise guarantee.</p> <p>Please check that this product meets your needs before purchasing. If you have any questions, special requirements or concerns, please send us an inquiry and/or contact our Support team ahead of purchase. Recommended alternatives for this product can be found below, as well as customer reviews and Q&As.</p>

Properties

Form	Liquid
Storage instructions	Shipped at 4°C. Store at +4°C short term (1-2 weeks). Upon delivery aliquot. Store at -20°C long term. Avoid freeze / thaw cycle.
Storage buffer	pH: 7.30 Preservative: 0.02% Sodium azide Constituents: 99% Tris buffered saline, 0.5% BSA
Purity	Immunogen affinity purified
Purification notes	ab215180 was purified from goat serum by ammonium sulphate precipitation followed by immunogen affinity chromatography.
Clonality	Polyclonal
Isotype	IgG

Applications

Our [Abpromise guarantee](#) covers the use of **ab215180** in the following tested applications.

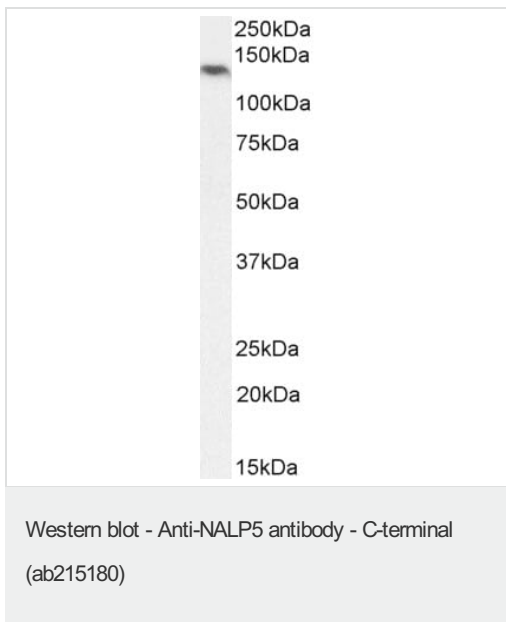
The application notes include recommended starting dilutions; optimal dilutions/concentrations should be determined by the end user.

Application	Abreviews	Notes
WB		Use a concentration of 1 - 3 µg/ml. Detects a band of approximately 130 kDa (predicted molecular weight: 134 kDa). 1 hour primary incubation is recommended for this product.

Target

Function	As a member of the subcortical maternal complex (SCMC), plays an essential role for zygotes to progress beyond the first embryonic cell divisions.
Tissue specificity	Oocyte-specific.
Sequence similarities	Belongs to the NLRP family. Contains 13 LRR (leucine-rich) repeats. Contains 1 NACHT domain. Contains 1 pyrin domain.
Cellular localization	Mitochondrion. Nucleus, nucleolus. Cytoplasm. In the subcortical cytoplasm of early embryos from the 1-cell to the blastocyst stages. From the 2-cell stage, still detected in the subcortex, but excluded from cell-cell contact regions (By similarity).

Images



Anti-NALP5 antibody - C-terminal (ab215180) at 2 µg/ml + Human ovary lysate in RIPA buffer at 35 µg

Developed using the ECL technique.

Predicted band size: 134 kDa

Observed band size: ~130 kDa

[why is the actual band size different from the predicted?](#)

Primary incubation was 1 hour.

Please note: All products are "FOR RESEARCH USE ONLY. NOT FOR USE IN DIAGNOSTIC PROCEDURES"

Our Abpromise to you: Quality guaranteed and expert technical support

- Replacement or refund for products not performing as stated on the datasheet
- Valid for 12 months from date of delivery
- Response to your inquiry within 24 hours
- We provide support in Chinese, English, French, German, Japanese and Spanish
- Extensive multi-media technical resources to help you
- We investigate all quality concerns to ensure our products perform to the highest standards

If the product does not perform as described on this datasheet, we will offer a refund or replacement. For full details of the Abpromise, please visit <https://www.abcam.com/abpromise> or contact our technical team.

Terms and conditions

- Guarantee only valid for products bought direct from Abcam or one of our authorized distributors