

Product datasheet

Anti-Nardilysin antibody ab154237

3 Images

Overview

Product name	Anti-Nardilysin antibody
Description	Rabbit polyclonal to Nardilysin
Host species	Rabbit
Tested applications	Suitable for: WB, ICC/IF
Species reactivity	Reacts with: Mouse, Human
Immunogen	Recombinant fragment, corresponding to a region within internal sequence amino acids 543-787 of Human Nardilysin.
Positive control	NT2D1 and Mouse kidney whole cell lysates; HeLa cells.
General notes	<p>The Life Science industry has been in the grips of a reproducibility crisis for a number of years. Abcam is leading the way in addressing this with our range of recombinant monoclonal antibodies and knockout edited cell lines for gold-standard validation. Please check that this product meets your needs before purchasing.</p> <p>If you have any questions, special requirements or concerns, please send us an inquiry and/or contact our Support team ahead of purchase. Recommended alternatives for this product can be found below, along with publications, customer reviews and Q&As</p>

Properties

Form	Liquid
Storage instructions	Shipped at 4°C. Upon delivery aliquot. Store at -20°C or -80°C. Avoid freeze / thaw cycle.
Storage buffer	pH: 7.00 Preservative: 0.01% Thimerosal (merthiolate) Constituents: 1.21% Tris, 0.75% Glycine, 20% Glycerol (glycerin, glycerine)
Purity	Immunogen affinity purified
Clonality	Polyclonal
Isotype	IgG

Applications

The Abpromise guarantee Our [Abpromise guarantee](#) covers the use of ab154237 in the following tested applications.

The application notes include recommended starting dilutions; optimal dilutions/concentrations should be determined by the end user.

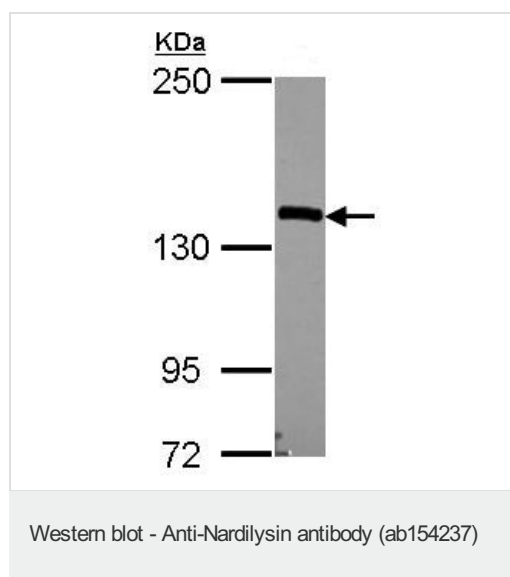
Application	Abreviews	Notes
WB		1/500 - 1/3000. Predicted molecular weight: 132 kDa.
ICC/IF		1/100 - 1/1000.

Target

Relevance

A member of the metalloproteinase family M16, nardilysin is most similar to insulin degrading enzyme, and the bacterial peptidase piritrylsin. It cleaves peptide substrates on the N terminus of arginine residues in dibasic pairs. Nardilysin was first described as a processing enzyme of somatostatin 1-28, which is cleaved at the Arg-Lys paired amino acid location. Nardilysin was named N arginine dibasic convertase (NRD convertase) to reflect this cleavage, although it was later shown that the activity was due to aminopeptidase B acting as a heterodimer with nardilysin. In addition to somatostatin 1-28, nardilysin cleaves dynorphin A and a-neoendorphin. Nardilysin was first detected in the brain and testis, and later in the heart, skeletal muscle, and in lesser amounts in most tissues and cell lines.

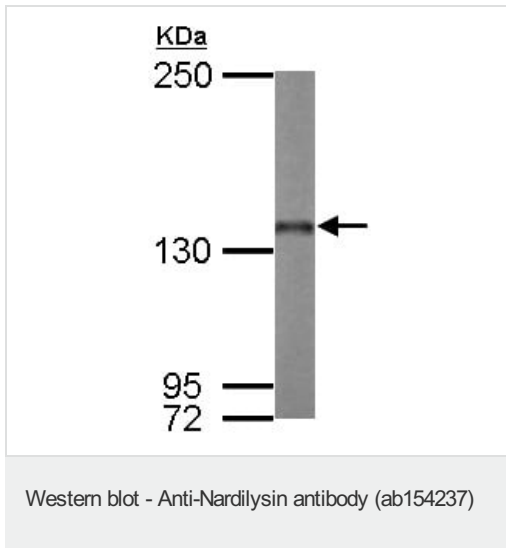
Images



Anti-Nardilysin antibody (ab154237) at 1/2000 dilution + NT2D1 whole cell lysate at 30 µg

Predicted band size: 132 kDa

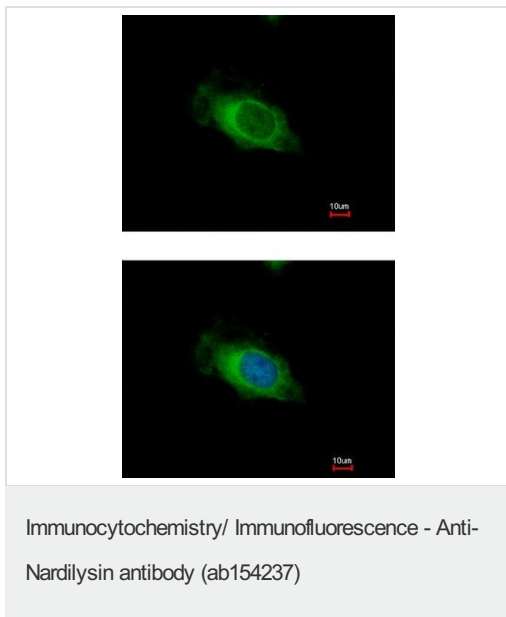
5% SDS PAGE



Anti-Nardilysin antibody (ab154237) at 1/1000 dilution + Mouse kidney whole cell lysate at 50 µg

Predicted band size: 132 kDa

5% SDS PAGE



Immunofluorescent analysis of methanol-fixed HeLa cells labeling Nardilysin with ab154237 at 1/500 dilution. Lower panel co-stained with Hoechst 33342.

Please note: All products are "FOR RESEARCH USE ONLY. NOT FOR USE IN DIAGNOSTIC PROCEDURES"

Our Abpromise to you: Quality guaranteed and expert technical support

- Replacement or refund for products not performing as stated on the datasheet
- Valid for 12 months from date of delivery

- Response to your inquiry within 24 hours
- We provide support in Chinese, English, French, German, Japanese and Spanish
- Extensive multi-media technical resources to help you
- We investigate all quality concerns to ensure our products perform to the highest standards

If the product does not perform as described on this datasheet, we will offer a refund or replacement. For full details of the Abpromise, please visit <https://www.abcam.com/abpromise> or contact our technical team.

Terms and conditions

- Guarantee only valid for products bought direct from Abcam or one of our authorized distributors