

Product datasheet

Anti-NAS6 antibody ab91447

2 References 1 Image

Overview

Product name	Anti-NAS6 antibody
Description	Rabbit polyclonal to NAS6
Host species	Rabbit
Tested applications	Suitable for: WB, IP
Species reactivity	Reacts with: <i>Saccharomyces cerevisiae</i>
Immunogen	Recombinant full length <i>Saccharomyces cerevisiae</i> NAS6 protein, expressed in <i>E. coli</i> .
Positive control	Crude extract of <i>S. cerevisiae</i>
General notes	<p>Reproducibility is key to advancing scientific discovery and accelerating scientists' next breakthrough.</p> <p>Abcam is leading the way with our range of recombinant antibodies, knockout-validated antibodies and knockout cell lines, all of which support improved reproducibility.</p> <p>We are also planning to innovate the way in which we present recommended applications and species on our product datasheets, so that only applications & species that have been tested in our own labs, our suppliers or by selected trusted collaborators are covered by our Abpromise™ guarantee.</p> <p>In preparation for this, we have started to update the applications & species that this product is Abpromise guaranteed for.</p> <p>We are also updating the applications & species that this product has been “predicted to work with,” however this information is not covered by our Abpromise guarantee.</p> <p>Applications & species from publications and Abreviews that have not been tested in our own labs or in those of our suppliers are not covered by the Abpromise guarantee.</p> <p>Please check that this product meets your needs before purchasing. If you have any questions, special requirements or concerns, please send us an inquiry and/or contact our Support team ahead of purchase. Recommended alternatives for this product can be found below, as well as customer reviews and Q&As.</p>

Properties

Form	Liquid
Storage instructions	Shipped at 4°C. Upon delivery aliquot and store at -20°C. Avoid repeated freeze / thaw cycles.

Storage buffer	pH: 6 Preservative: 0.09% Sodium azide Constituents: PBS, 0.1% BSA, 50% Glycerol (glycerin, glycerine)
Purity	Immunogen affinity purified
Clonality	Polyclonal
Isotype	IgG

Applications

Our [Abpromise guarantee](#) covers the use of **ab91447** in the following tested applications.

The application notes include recommended starting dilutions; optimal dilutions/concentrations should be determined by the end user.

Application	Abreviews	Notes
-------------	-----------	-------

WB

IP

Application notes

IP: Use at an assay dependent dilution.
WB: 1/5000. Predicted molecular weight: 26 kDa.

Not yet tested in other applications.
Optimal dilutions/concentrations should be determined by the end user.

Target

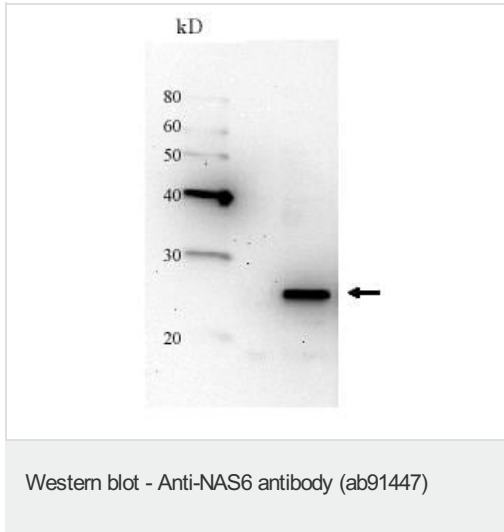
Relevance

NAS6 (p28) is a proteasome-interacting protein which acts as a chaperone to assemble the base sub-complex of the 19S RP which is involved in the ATP-dependent degradation of ubiquitinated proteins. NAS6 is composed of 226 amino acid residues with calculated molecular masses of 24.4kD.

Cellular localization

Cytosol; Nucleus; Proteasome complex

Images



Anti-NAS6 antibody (ab91447) at 1/5000 dilution + Crude extract of *S. cerevisiae*

Predicted band size: 26 kDa

Please note: All products are "FOR RESEARCH USE ONLY. NOT FOR USE IN DIAGNOSTIC PROCEDURES"

Our Abpromise to you: Quality guaranteed and expert technical support

- Replacement or refund for products not performing as stated on the datasheet
- Valid for 12 months from date of delivery
- Response to your inquiry within 24 hours
- We provide support in Chinese, English, French, German, Japanese and Spanish
- Extensive multi-media technical resources to help you
- We investigate all quality concerns to ensure our products perform to the highest standards

If the product does not perform as described on this datasheet, we will offer a refund or replacement. For full details of the Abpromise, please visit <https://www.abcam.com/abpromise> or contact our technical team.

Terms and conditions

- Guarantee only valid for products bought direct from Abcam or one of our authorized distributors