

Product datasheet

Native cow Protein C ab81581

[1 References](#) [1 Image](#)

Description

Product name	Native cow Protein C
Biological activity	<1% APC activity. Assay is performed to determine percent contaminating APC activity. APC activity is based on a APC standard curve. Chromagenic assay uses Spectrozyme-TH as substrate.
Purity	> 95 % SDS-PAGE.
Expression system	Native
Protein length	Full length protein
Animal free	No
Nature	Native
Species	Cow

Specifications

Our [Abpromise guarantee](#) covers the use of **ab81581** in the following tested applications.

The application notes include recommended starting dilutions; optimal dilutions/concentrations should be determined by the end user.

Applications	SDS-PAGE
Form	Liquid

Preparation and Storage

Stability and Storage	Shipped on dry ice. Upon delivery aliquot and store at -80°C. Avoid freeze / thaw cycles. pH: 7.40 Constituents: 0.476% HEPES, 0.87% Sodium chloride This product is an active protein and may elicit a biological response in vivo, handle with caution.
------------------------------	--

General Info

Function	Protein C is a vitamin K-dependent serine protease that regulates blood coagulation by inactivating factors Va and VIIIa in the presence of calcium ions and phospholipids
-----------------	--

(PubMed:25618265). Exerts a protective effect on the endothelial cell barrier function (PubMed:25651845).

Tissue specificity

Plasma; synthesized in the liver.

Involvement in disease

Thrombophilia due to protein C deficiency, autosomal dominant
Thrombophilia due to protein C deficiency, autosomal recessive

Sequence similarities

Belongs to the peptidase S1 family.
Contains 2 EGF-like domains.
Contains 1 Gla (gamma-carboxy-glutamate) domain.
Contains 1 peptidase S1 domain.

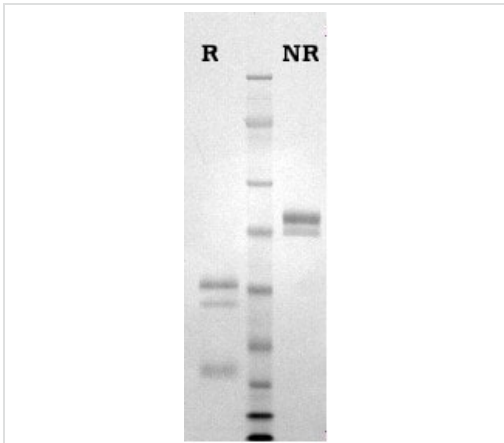
Post-translational modifications

The vitamin K-dependent, enzymatic carboxylation of some Glu residues allows the modified protein to bind calcium.
N- and O-glycosylated. Partial (70%) N-glycosylation of Asn-371 with an atypical N-X-C site produces a higher molecular weight form referred to as alpha. The lower molecular weight form, not N-glycosylated at Asn-371, is beta. O-glycosylated with core 1 or possibly core 8 glycans. The iron and 2-oxoglutarate dependent 3-hydroxylation of aspartate and asparagine is (R) stereospecific within EGF domains.
May be phosphorylated on a Ser or Thr in a region (AA 25-30) of the propeptide.

Cellular localization

Secreted. Golgi apparatus. Endoplasmic reticulum.

Images



Novex 4-12% Bis-Tris
1 µg per lane
MOPS

SDS-PAGE - Native cow Protein C (ab81581)

Please note: All products are "FOR RESEARCH USE ONLY. NOT FOR USE IN DIAGNOSTIC PROCEDURES"

Our Abpromise to you: Quality guaranteed and expert technical support

- Replacement or refund for products not performing as stated on the datasheet
- Valid for 12 months from date of delivery
- Response to your inquiry within 24 hours
- We provide support in Chinese, English, French, German, Japanese and Spanish
- Extensive multi-media technical resources to help you

- We investigate all quality concerns to ensure our products perform to the highest standards

If the product does not perform as described on this datasheet, we will offer a refund or replacement. For full details of the Abpromise, please visit <https://www.abcam.com/abpromise> or contact our technical team.

Terms and conditions

- Guarantee only valid for products bought direct from Abcam or one of our authorized distributors