

Product datasheet

Native Human Azurocidin protein ab91129

2 Images

Description

Product name	Native Human Azurocidin protein
Purity	> 95 % SDS-PAGE.
Expression system	Native
Protein length	Full length protein
Animal free	No
Nature	Native
Species	Human

Specifications

Our [Abpromise guarantee](#) covers the use of **ab91129** in the following tested applications.

The application notes include recommended starting dilutions; optimal dilutions/concentrations should be determined by the end user.

Applications	Western blot SDS-PAGE
Form	Lyophilized
Additional notes	Prepared from whole blood shown to be non reactive for HBsAg, anti-HCV, anti-HBc, and negative for anti-HIV 1 & 2 by FDA approved tests.

Preparation and Storage

Stability and Storage	Shipped at 4°C. Upon delivery aliquot and store at -20°C. Avoid repeated freeze / thaw cycles.
------------------------------	--

General Info

Function	This is a neutrophil granule-derived antibacterial and monocyte- and fibroblast-specific chemotactic glycoprotein. Binds heparin. The cytotoxic action is limited to many species of Gram-negative bacteria; this specificity may be explained by a strong affinity of the very basic N-terminal half for the negatively charged lipopolysaccharides that are unique to the Gram-negative bacterial outer envelope. It may play a role in mediating recruitment of monocytes in the second wave of inflammation. Has antibacterial activity against the Gram-negative bacterium P.aeruginosa, this
-----------------	--

activity is inhibited by LPS from *P.aeruginosa*. Acting alone, it does not have antimicrobial activity against the Gram-negative bacteria *A.actinomycetemcomitans* ATCC 29532, *A.actinomycetemcomitans* NCTC 9709, *A.actinomycetemcomitans* FDC-Y4, *H.aphrophilus* ATCC 13252, *E.corrodens* ATCC 23834, *C.sputigena* ATCC 33123, *Capnocytophaga* sp ATCC 33124, *Capnocytophaga* sp ATCC 27872 or *E.coli* ML-35. Has antibacterial activity against *C.sputigena* ATCC 33123 when acting synergistically with either elastase or cathepsin G.

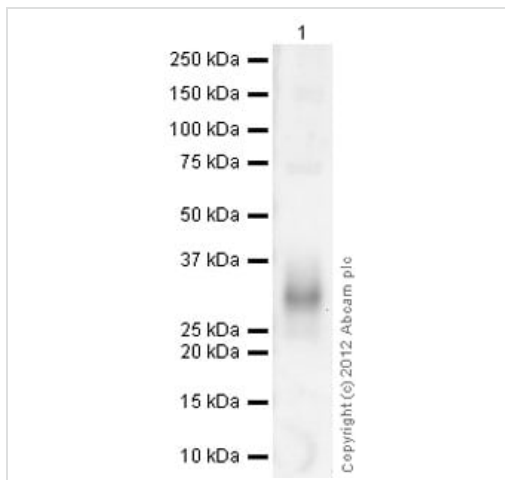
Sequence similarities

Belongs to the peptidase S1 family. Elastase subfamily.
Contains 1 peptidase S1 domain.

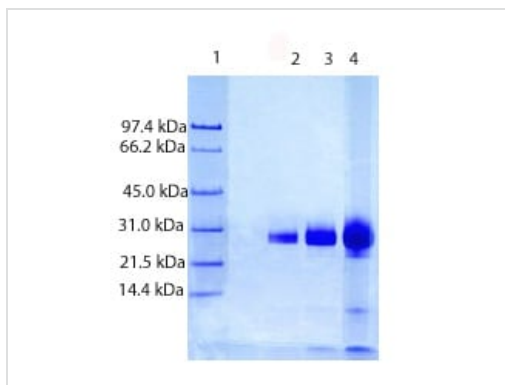
Cellular localization

Cytoplasmic granule. Cytoplasmic granules of neutrophils.

Images



Western blot - Native Human Azurocidin protein
(ab91129)



SDS-PAGE - Native Human Azurocidin protein
(ab91129)

Lane 1. LMW Standard

Lane 2. Azurocidin - 5 µg (reduced / heated)

Lane 3. Azurocidin - 10 µg (reduced / heated)

Lane 4. Azurocidin - 20 µg (reduced / heated)

4-12% Bis-Tris SDS-PAGE gel

Please note: All products are "FOR RESEARCH USE ONLY. NOT FOR USE IN DIAGNOSTIC PROCEDURES"

Our Abpromise to you: Quality guaranteed and expert technical support

- Replacement or refund for products not performing as stated on the datasheet
- Valid for 12 months from date of delivery
- Response to your inquiry within 24 hours

- We provide support in Chinese, English, French, German, Japanese and Spanish
- Extensive multi-media technical resources to help you
- We investigate all quality concerns to ensure our products perform to the highest standards

If the product does not perform as described on this datasheet, we will offer a refund or replacement. For full details of the Abpromise, please visit <https://www.abcam.com/abpromise> or contact our technical team.

Terms and conditions

- Guarantee only valid for products bought direct from Abcam or one of our authorized distributors