

Product datasheet

Native human Factor IXa protein ab81594

1 Image

Description

Product name	Native human Factor IXa protein
Biological activity	<1% Factor IXa activity. Active site blocked by DEGR.
Purity	> 95 % SDS-PAGE.
Expression system	Native
Protein length	Full length protein
Animal free	No
Nature	Native
Species	Human

Specifications

Our [Abpromise guarantee](#) covers the use of **ab81594** in the following tested applications.

The application notes include recommended starting dilutions; optimal dilutions/concentrations should be determined by the end user.

Applications	Functional Studies SDS-PAGE
Form	Liquid
Additional notes	Concentration varies from lot to lot but is between 5-10mg/ml

Preparation and Storage

Stability and Storage	Shipped on dry ice. Upon delivery aliquot and store at -80°C. Avoid freeze / thaw cycles. pH: 7.40 Constituents: 0.476% HEPES, 0.87% Sodium chloride This product is an active protein and may elicit a biological response in vivo, handle with caution.
------------------------------	--

General Info

Function	Factor IX is a vitamin K-dependent plasma protein that participates in the intrinsic pathway of blood coagulation by converting factor X to its active form in the presence of Ca(2+) ions,
-----------------	---

phospholipids, and factor VIIIa.

Tissue specificity

Synthesized primarily in the liver and secreted in plasma.

Involvement in disease

Defects in F9 are the cause of recessive X-linked hemophilia B (HEMB) [MIM:306900]; also known as Christmas disease.

Note=Mutations in position 43 (Oxford-3, San Dimas) and 46 (Cambridge) prevents cleavage of the propeptide, mutation in position 93 (Alabama) probably fails to bind to cell membranes, mutation in position 191 (Chapel-Hill) or in position 226 (Nagoya OR Hilo) prevent cleavage of the activation peptide.

Defects in F9 are the cause of thrombophilia due to factor IX defect (THR-FIX) [MIM:300807]. A hemostatic disorder characterized by a tendency to thrombosis.

Sequence similarities

Belongs to the peptidase S1 family.

Contains 2 EGF-like domains.

Contains 1 Gla (gamma-carboxy-glutamate) domain.

Contains 1 peptidase S1 domain.

Domain

Calcium binds to the gamma-carboxyglutamic acid (Gla) residues and, with stronger affinity, to another site, beyond the Gla domain.

Post-translational modifications

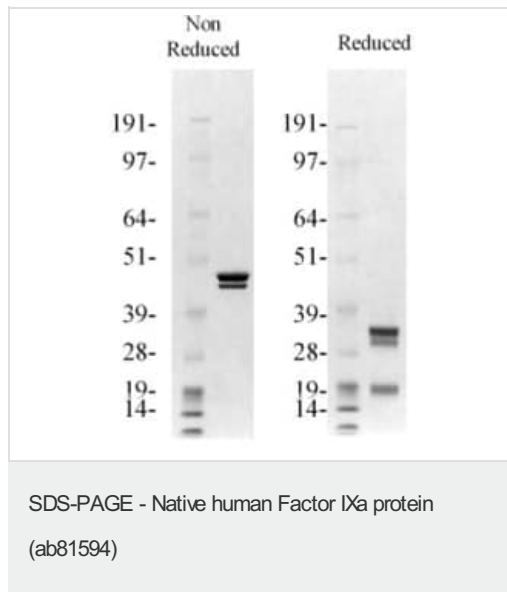
Activated by factor XIa, which excises the activation peptide.

The iron and 2-oxoglutarate dependent 3-hydroxylation of aspartate and asparagine is (R) stereospecific within EGF domains.

Cellular localization

Secreted.

Images



Novex 4-12% Bis-Tris

1 µg per lane

MOPS

Please note: All products are "FOR RESEARCH USE ONLY. NOT FOR USE IN DIAGNOSTIC PROCEDURES"

Our Abpromise to you: Quality guaranteed and expert technical support

- Replacement or refund for products not performing as stated on the datasheet
- Valid for 12 months from date of delivery
- Response to your inquiry within 24 hours

- We provide support in Chinese, English, French, German, Japanese and Spanish
- Extensive multi-media technical resources to help you
- We investigate all quality concerns to ensure our products perform to the highest standards

If the product does not perform as described on this datasheet, we will offer a refund or replacement. For full details of the Abpromise, please visit <https://www.abcam.com/abpromise> or contact our technical team.

Terms and conditions

- Guarantee only valid for products bought direct from Abcam or one of our authorized distributors