

Product datasheet

Native Human GCDFP 15 protein ab167926

1 Image

Overview

Product name	Native Human GCDFP 15 protein
Protein length	Full length protein

Description

Nature	Native
Source	Native
Amino Acid Sequence	
Accession	P12273
Species	Human
Sequence	QDNTRKIIIK NFDIPKSVRP NDEVTAVLAV QTELKECMVV KTYLISS IPL QGAFNYKYTA CLCDDNPKTF YWDFYTNRTV QIAAVVDVIR ELGICPDDAA VIPIKNNRFY TIEILKVE
Molecular weight	14 kDa
Amino acids	29 to 146

Specifications

Our [Abpromise guarantee](#) covers the use of **ab167926** in the following tested applications.

The application notes include recommended starting dilutions; optimal dilutions/concentrations should be determined by the end user.

Applications	Western blot ELISA SDS-PAGE Mass Spectrometry
Endotoxin level	< 1.000 Eu/µg
Mass spectrometry	LC-MS/MS
Purity	>95% by SDS-PAGE .
Form	Lyophilised

Additional notes

All samples used for protein preparation were tested and found negative for HBsAg, HIV1,2, HCV, syphilis, aHBc, RRR. Since no test can absolutely assure the absence of all infectious agents, this product should be handled as a potential biohazard.

Preparation and Storage

Stability and Storage

Shipped at 4°C. Store at -80°C.

pH: 8.00

Constituents: 99% Phosphate Buffer, 0.43% Sodium chloride

Reconstitution

Add 200µl of deionized water to prepare a working stock solution of 0.5 mg/ml and let the lyophilized pellet dissolve completely. Aliquot reconstituted protein to avoid repeated freezing/thawing cycles and store at -80°C for long term storage.

Product is not sterile! Please filter the product by an appropriate sterile filter before using it in the cell culture.

General Info

Tissue specificity

Expressed in pathological conditions of the mammary gland and in several exocrine tissues, such as the lacrimal, salivary, and sweat glands.

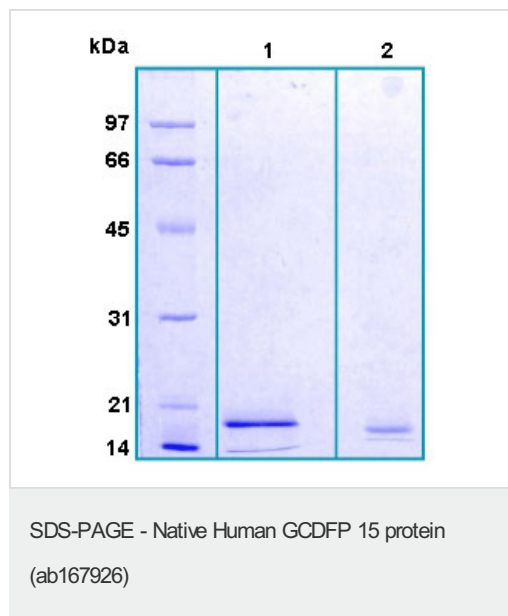
Sequence similarities

Belongs to the PIP family.

Cellular localization

Secreted.

Images



12% SDS-PAGE analysis of ab167926 stained with Coomassie Brilliant Blue G250

Lane 1: reduced and boiled sample, 2.5µg/lane

Lane 2: non-reduced and non-boiled sample, 2.5µg/lane

Please note: All products are "FOR RESEARCH USE ONLY AND ARE NOT INTENDED FOR DIAGNOSTIC OR THERAPEUTIC USE"

Our Abpromise to you: Quality guaranteed and expert technical support

- Replacement or refund for products not performing as stated on the datasheet
- Valid for 12 months from date of delivery
- Response to your inquiry within 24 hours

- We provide support in Chinese, English, French, German, Japanese and Spanish
- Extensive multi-media technical resources to help you
- We investigate all quality concerns to ensure our products perform to the highest standards

If the product does not perform as described on this datasheet, we will offer a refund or replacement. For full details of the Abpromise, please visit <https://www.abcam.com/abpromise> or contact our technical team.

Terms and conditions

- Guarantee only valid for products bought direct from Abcam or one of our authorized distributors