

Product datasheet

Native Human IgG FC fragment protein ab90285

6 References 1 Image

Overview

---

<b>Product name</b>	Native Human IgG FC fragment protein
<b>Protein length</b>	Full length protein

Description

---

<b>Nature</b>	Native
<b>Source</b>	Native
<b>Amino Acid Sequence</b>	
<b>Additional sequence information</b>	Prepared from plasma

Specifications

---

Our [Abpromise guarantee](#) covers the use of **ab90285** in the following tested applications.

The application notes include recommended starting dilutions; optimal dilutions/concentrations should be determined by the end user.

<b>Biological activity</b>	Shown to be non reactive for HbsAG, anti-HCV, anti-HBc, and negative for anti-HIV 1 and 2 by FDA approved tests.
<b>Applications</b>	SDS-PAGE
<b>Purity</b>	> 95 % SDS-PAGE.
<b>Form</b>	Liquid
<b>Additional notes</b>	Protein Determination: Extinction Coefficient (E) 0.1% at 280nm =1.46.

The IgG fc fragment does not bind antigen; however, it does contain the classic antigenic determinants and biological activity with respect to cytotrophic reactions, binding of complement and catabolic rate control.

Shown to be non reactive for HbsAG, anti-HCV, anti-HBc, and negative for anti-HIV 1 and 2 by FDA approved tests.

Preparation and Storage

---

## Stability and Storage

Shipped on Dry Ice. Upon delivery aliquot. Store at -80°C. Avoid freeze / thaw cycle.

pH: 8.00

Preservative: 0.05% Sodium azide

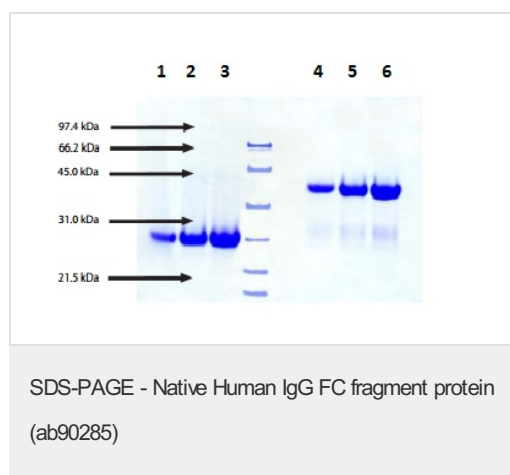
Constituents: 0.79% Tris HCl, 1.16% Sodium chloride

## General Info

### Relevance

The Fc region is the constant region on an immunoglobulin molecule, the area that is exactly the same on all antibodies. The Fc region is found on the heavy chains and is not involved in binding antigens.

## Images



4-12% Bis-Tris NuPAGE Gel analysis of ab90285.

Lanes 1-3 show 5, 10 and 15 µg, respectively; run under heated/reducing conditions.

Lanes 4-6 show 5, 10 and 15 µg, respectively; not heated/non-reducing conditions.

**Please note:** All products are "FOR RESEARCH USE ONLY. NOT FOR USE IN DIAGNOSTIC PROCEDURES"

## Our Abpromise to you: Quality guaranteed and expert technical support

- Replacement or refund for products not performing as stated on the datasheet
- Valid for 12 months from date of delivery
- Response to your inquiry within 24 hours
- We provide support in Chinese, English, French, German, Japanese and Spanish
- Extensive multi-media technical resources to help you
- We investigate all quality concerns to ensure our products perform to the highest standards

If the product does not perform as described on this datasheet, we will offer a refund or replacement. For full details of the Abpromise, please visit <https://www.abcam.com/abpromise> or contact our technical team.

## Terms and conditions

- Guarantee only valid for products bought direct from Abcam or one of our authorized distributors