

Product datasheet

Native human Trypsin protein ab78527

1 Image

Description

Product name	Native human Trypsin protein
Biological activity	Activity: >2.5units per mg protein. One unit is defined as the amount of enzyme that hydrolyzes one umole of N-Benzyl-L-arginine-pNA per minute at 25°C in 200mM Tris-HCl, pH 7.8, 20mM CaCl ₂ .
Purity	> 95 % SDS-PAGE. ab78527 shows no chymotrypsin activity when assayed against N-succinyl-L-alanyl-L-alanyl-L-prolyl-L-phenylalanine-p-nitroanilide.
Expression system	Native
Protein length	Full length protein
Animal free	No
Nature	Native
Species	Human

Specifications

Our [Abpromise guarantee](#) covers the use of **ab78527** in the following tested applications.

The application notes include recommended starting dilutions; optimal dilutions/concentrations should be determined by the end user.

Applications	Western blot SDS-PAGE
Form	Lyophilized

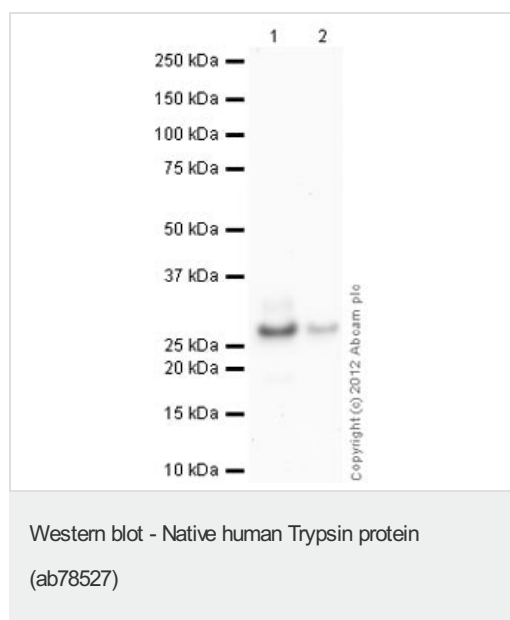
Preparation and Storage

Stability and Storage	Shipped at 4°C. Store at -20°C. Stable for 12 months at -20°C. This product is an active protein and may elicit a biological response in vivo, handle with caution.
Reconstitution	Reconstitute in 93.5µl 2mM HCl. Use product immediately after bringing to neutral pH to avoid auto-degradation. After reconstitution, aliquot and store at -20°C. Avoid multiple freeze/thaw cycles.

General Info

Function	Has activity against the synthetic substrates Boc-Phe-Ser-Arg-Mec, Boc-Leu-Thr-Arg-Mec, Boc-Gln-Ala-Arg-Mec and Boc-Val-Pro-Arg-Mec. The single-chain form is more active than the two-chain form against all of these substrates.
Involvement in disease	Defects in PRSS1 are a cause of hereditary pancreatitis (HPC) [MIM:167800]; also known as chronic pancreatitis (CP). HPC is an autosomal dominant disease characterized by the presence of calculi in pancreatic ducts. It causes severe abdominal pain attacks.
Sequence similarities	Belongs to the peptidase S1 family. Contains 1 peptidase S1 domain.
Post-translational modifications	Occurs in a single-chain form and a two-chain form, produced by proteolytic cleavage after Arg-122.
Cellular localization	Secreted > extracellular space.

Images



Please note: All products are "FOR RESEARCH USE ONLY. NOT FOR USE IN DIAGNOSTIC PROCEDURES"

Our Abpromise to you: Quality guaranteed and expert technical support

- Replacement or refund for products not performing as stated on the datasheet
- Valid for 12 months from date of delivery
- Response to your inquiry within 24 hours
- We provide support in Chinese, English, French, German, Japanese and Spanish
- Extensive multi-media technical resources to help you
- We investigate all quality concerns to ensure our products perform to the highest standards

If the product does not perform as described on this datasheet, we will offer a refund or replacement. For full details of the Abpromise, please visit <https://www.abcam.com/abpromise> or contact our technical team.

Terms and conditions

- Guarantee only valid for products bought direct from Abcam or one of our authorized distributors