

Product datasheet

Anti-NCAM1 antibody [A24-I] - C-terminal ab179872

1 Image

Overview

Product name	Anti-NCAM1 antibody [A24-I] - C-terminal
Description	Rabbit monoclonal [A24-I] to NCAM1 - C-terminal
Host species	Rabbit
Tested applications	Suitable for: WB
Species reactivity	Reacts with: Human
Immunogen	Synthetic peptide corresponding to Human NCAM (C terminal). Database link: P13591
Epitope	Antibody recognizes the epitope located between Glu687 - Ile708
Positive control	Recombinant tagged Human NCAM (aa 611 – 710).
General notes	<p>The Life Science industry has been in the grips of a reproducibility crisis for a number of years. Abcam is leading the way in addressing this with our range of recombinant monoclonal antibodies and knockout edited cell lines for gold-standard validation. Please check that this product meets your needs before purchasing.</p> <p>If you have any questions, special requirements or concerns, please send us an inquiry and/or contact our Support team ahead of purchase. Recommended alternatives for this product can be found below, along with publications, customer reviews and Q&As</p>

Properties

Form	Liquid
Storage instructions	Shipped at 4°C. Store at +4°C short term (1-2 weeks). Upon delivery aliquot. Store at -20°C long term. Avoid freeze / thaw cycle.
Storage buffer	pH: 8.00 Preservative: 0.05% Sodium azide Constituents: 0.32% Tris HCl, 1% BSA
Purity	Immunogen affinity purified
Clonality	Monoclonal
Clone number	A24-I
Isotype	IgG

Applications

The Abpromise guarantee

Our [Abpromise guarantee](#) covers the use of ab179872 in the following tested applications.

The application notes include recommended starting dilutions; optimal dilutions/concentrations should be determined by the end user.

Application	Abreviews	Notes
WB		1/1000. Predicted molecular weight: 94 kDa.

Target

Function

This protein is a cell adhesion molecule involved in neuron-neuron adhesion, neurite fasciculation, outgrowth of neurites, etc.

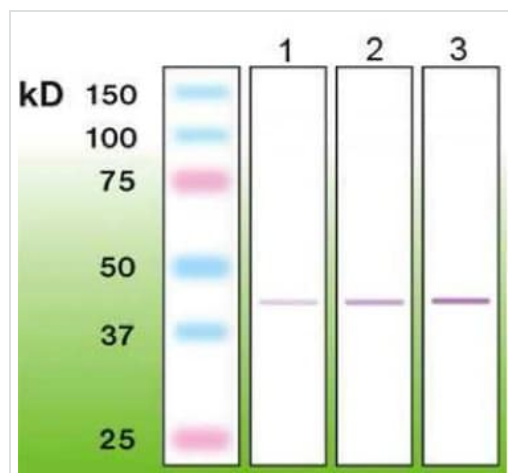
Sequence similarities

Contains 2 fibronectin type-III domains.
Contains 5 Ig-like C2-type (immunoglobulin-like) domains.

Cellular localization

Secreted and Cell membrane.

Images



Western blot - Anti-NCAM1 antibody [A24-I] - C-terminal (ab179872)

All lanes : Anti-NCAM1 antibody [A24-I] - C-terminal (ab179872) at 1/1000 dilution

Lane 1 : Recombinant tagged Human NCAM (aa 611 – 710) at 0.1 µg

Lane 2 : Recombinant tagged Human NCAM (aa 611 – 710) at 0.2 µg

Lane 3 : Recombinant tagged Human NCAM (aa 611 – 710) at 0.5 µg

Predicted band size: 94 kDa

Please note: All products are "FOR RESEARCH USE ONLY. NOT FOR USE IN DIAGNOSTIC PROCEDURES"

Our Abpromise to you: Quality guaranteed and expert technical support

- Replacement or refund for products not performing as stated on the datasheet
- Valid for 12 months from date of delivery
- Response to your inquiry within 24 hours
- We provide support in Chinese, English, French, German, Japanese and Spanish
- Extensive multi-media technical resources to help you

- We investigate all quality concerns to ensure our products perform to the highest standards

If the product does not perform as described on this datasheet, we will offer a refund or replacement. For full details of the Abpromise, please visit <https://www.abcam.com/abpromise> or contact our technical team.

Terms and conditions

- Guarantee only valid for products bought direct from Abcam or one of our authorized distributors