


Product datasheet

Anti-NCR1 antibody ab199128

4 References 4 Images

Overview

<b>Product name</b>	Anti-NCR1 antibody
<b>Description</b>	Rabbit polyclonal to NCR1
<b>Host species</b>	Rabbit
<b>Tested applications</b>	<b>Suitable for:</b> IHC-P, WB
<b>Species reactivity</b>	<b>Reacts with:</b> Mouse, Human <b>Predicted to work with:</b> Rat 
<b>Immunogen</b>	Synthetic peptide corresponding to Human NCR1. (Near the C terminal; NP_001138929). Database link: <a href="#">O76036</a>
<b>Positive control</b>	Mouse kidney tissue lysate; Human lymphoma tissue.

Properties

<b>Form</b>	Liquid
<b>Storage instructions</b>	Shipped at 4°C. Store at +4°C short term (1-2 weeks). Upon delivery aliquot. Store at -20°C long term. Avoid freeze / thaw cycle.
<b>Storage buffer</b>	pH: 7.3 Preservative: 0.05% Sodium azide Constituents: 49% PBS, 50% Glycerol
<b>Purity</b>	Immunogen affinity purified
<b>Clonality</b>	Polyclonal
<b>Isotype</b>	IgG

Applications

Our [Abpromise guarantee](#) covers the use of **ab199128** in the following tested applications.

The application notes include recommended starting dilutions; optimal dilutions/concentrations should be determined by the end user.

Application	Abreviews	Notes
IHC-P		1/25 - 1/100.

Application	Abreviews	Notes
WB		1/200 - 1/1000. Predicted molecular weight: 34 kDa.

## Target

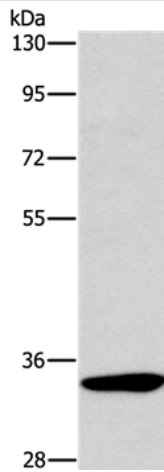
<b>Function</b>	Cytotoxicity-activating receptor that may contribute to the increased efficiency of activated natural killer (NK) cells to mediate tumor cell lysis.
<b>Tissue specificity</b>	Selectively expressed by both resting and activated NK cells.
<b>Sequence similarities</b>	Belongs to the natural cytotoxicity receptor (NCR) family. Contains 2 Ig-like (immunoglobulin-like) domains.
<b>Post-translational modifications</b>	N-glycosylated. O-glycosylated.
<b>Cellular localization</b>	Cell membrane.

## Images



Immunohistochemical analysis of paraffin-embedded Human lymphoma tissue labeling NCR1 with ab199128 at 1/20 dilution.

Immunohistochemistry (Formalin/PFA-fixed paraffin-embedded sections) - Anti-NCR1 antibody (ab199128)

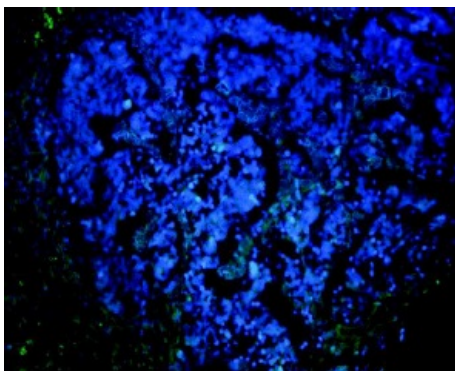


Western blot - Anti-NCR1 antibody (ab199128)

Anti-NCR1 antibody (ab199128) at 1/450 dilution + Mouse kidney tissue lysate at 40  $\mu$ g

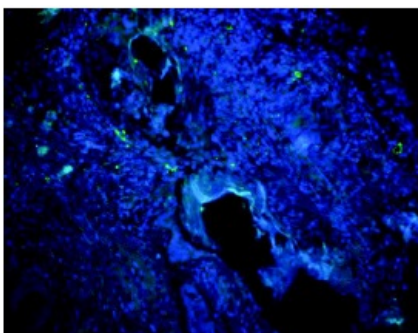
**Predicted band size:** 34 kDa

Gel: 8% SDS-PAGE.



Immunofluorescence of Human lung cancer labeling NCR1 with ab199128 at 1:20. A FITC conjugated antibody was used as a secondary.

Immunohistochemistry (Formalin/PFA-fixed paraffin-embedded sections) - Anti-NCR1 antibody (ab199128)



Immunofluorescence of Human esophagus cancer labeling NCR1 with ab199128 at 1:20. A FITC conjugated antibody was used as a secondary.

Immunohistochemistry (Formalin/PFA-fixed paraffin-embedded sections) - Anti-NCR1 antibody (ab199128)

**Please note:** All products are "FOR RESEARCH USE ONLY. NOT FOR USE IN DIAGNOSTIC PROCEDURES"

## **Our Abpromise to you: Quality guaranteed and expert technical support**

---

- Replacement or refund for products not performing as stated on the datasheet
- Valid for 12 months from date of delivery
- Response to your inquiry within 24 hours
  
- We provide support in Chinese, English, French, German, Japanese and Spanish
- Extensive multi-media technical resources to help you
- We investigate all quality concerns to ensure our products perform to the highest standards

If the product does not perform as described on this datasheet, we will offer a refund or replacement. For full details of the Abpromise, please visit <https://www.abcam.com/abpromise> or contact our technical team.

## **Terms and conditions**

---

- Guarantee only valid for products bought direct from Abcam or one of our authorized distributors