

Product datasheet

Anti-NCS1 antibody ab116230

1 References 1 Image

Overview

Product name	Anti-NCS1 antibody
Description	Rabbit polyclonal to NCS1
Host species	Rabbit
Tested applications	Suitable for: IHC-P
Species reactivity	Reacts with: Human
Immunogen	Recombinant full length protein Mouse NCS1 protein with extensive post-translational modifications.
General notes	<p>Dilute only prior to immediate use.</p> <p>The Life Science industry has been in the grips of a reproducibility crisis for a number of years. Abcam is leading the way in addressing this with our range of recombinant monoclonal antibodies and knockout edited cell lines for gold-standard validation. Please check that this product meets your needs before purchasing.</p> <p>If you have any questions, special requirements or concerns, please send us an inquiry and/or contact our Support team ahead of purchase. Recommended alternatives for this product can be found below, along with publications, customer reviews and Q&As</p>

Properties

Form	Liquid
Storage instructions	Shipped at 4°C. Upon delivery aliquot and store at -20°C. Avoid repeated freeze / thaw cycles.
Storage buffer	<p>pH: 7.20</p> <p>Preservative: 0.01% Sodium azide</p> <p>Constituents: 0.88% Sodium chloride, 0.424% Potassium phosphate</p>
Purity	Immunogen affinity purified
Clonality	Polyclonal
Isotype	IgG

Applications

The Abpromise guarantee Our [Abpromise guarantee](#) covers the use of ab116230 in the following tested applications.

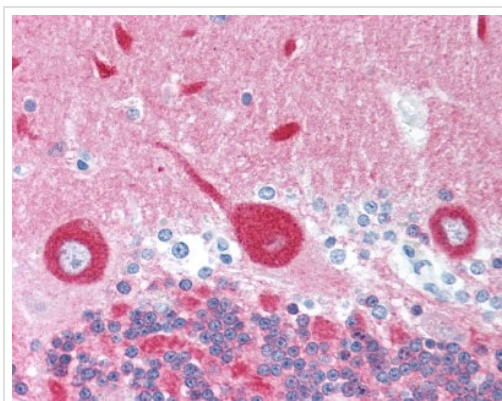
The application notes include recommended starting dilutions; optimal dilutions/concentrations should be determined by the end user.

Application	Abreviews	Notes
IHC-P		Use a concentration of 5 µg/ml. Perform heat mediated antigen retrieval with citrate buffer pH 6 before commencing with IHC staining protocol.

Target

Function	Neuronal calcium sensor, regulator of G protein-coupled receptor phosphorylation in a calcium dependent manner. Directly regulates GRK1 (RHOK), but not GRK2 to GRK5. Can substitute for calmodulin (By similarity). Stimulates PI4KB kinase activity (By similarity). Involved in long-term synaptic plasticity through its interaction with PICK1 (By similarity). May also play a role in neuron differentiation through inhibition of the activity of N-type voltage-gated calcium channel.
Sequence similarities	Belongs to the recoverin family. Contains 4 EF-hand domains.
Cellular localization	Golgi apparatus > Golgi stack membrane. Cell junction > synapse > postsynaptic cell membrane > postsynaptic density. Cytoplasm > perinuclear region. Cell membrane. Associated with Golgi stacks. Post-synaptic densities of dendrites, and in the pre-synaptic nerve terminal at neuromuscular junctions.

Images



Immunohistochemistry (Formalin/PFA-fixed paraffin-embedded sections) - Anti-NCS1 antibody (ab116230)

ab116230, at 5 µg/ml, staining NCS1 in formalin fixed, paraffin embedded Human brain (cerebellum) tissue by Immunohistochemistry. After incubation with the primary antibody, slides were incubated with biotinylated goat anti-rabbit IgG secondary antibody, followed by alkaline phosphatase-streptavidin and chromogen.

Please note: All products are "FOR RESEARCH USE ONLY. NOT FOR USE IN DIAGNOSTIC PROCEDURES"

Our Abpromise to you: Quality guaranteed and expert technical support

- Replacement or refund for products not performing as stated on the datasheet
- Valid for 12 months from date of delivery

- Response to your inquiry within 24 hours
- We provide support in Chinese, English, French, German, Japanese and Spanish
- Extensive multi-media technical resources to help you
- We investigate all quality concerns to ensure our products perform to the highest standards

If the product does not perform as described on this datasheet, we will offer a refund or replacement. For full details of the Abpromise, please visit <https://www.abcam.com/abpromise> or contact our technical team.

Terms and conditions

- Guarantee only valid for products bought direct from Abcam or one of our authorized distributors