




Product datasheet

Anti-NDUFB5 antibody ab230215

4 Images

Overview

<b>Product name</b>	Anti-NDUFB5 antibody
<b>Description</b>	Rabbit polyclonal to NDUFB5
<b>Host species</b>	Rabbit
<b>Tested applications</b>	<b>Suitable for:</b> IHC-P, WB, ICC/IF
<b>Species reactivity</b>	<b>Reacts with:</b> Mouse, Human <b>Predicted to work with:</b> Chimpanzee, Cynomolgus monkey, Gorilla 
<b>Immunogen</b>	Recombinant fragment corresponding to Human NDUFB5 aa 100-189. Sequence: EIEGYVPEHWEYKHPISRWIARNFYDSPEKIYERTMAVL QIEAEKAEL RVKELEVRKLMHVRGDGPWYYYETIDKELIDHSPKATPDN  Database link: <a href="#">O43674</a>   <a href="#">Run BLAST with</a>  <a href="#">Run BLAST with</a>
<b>Positive control</b>	WB: HEK-293T, Jurkat and MCF7 whole cell lysates; Mouse heart and kidney tissue lysates. IHC-P: Human kidney and spleen tissues. ICC/IF: HeLa cells.
<b>General notes</b>	<p>Reproducibility is key to advancing scientific discovery and accelerating scientists' next breakthrough.</p> <p>Abcam is leading the way with our range of recombinant antibodies, knockout-validated antibodies and knockout cell lines, all of which support improved reproducibility.</p> <p>We are also planning to innovate the way in which we present recommended applications and species on our product datasheets, so that only applications &amp; species that have been tested in our own labs, our suppliers or by selected trusted collaborators are covered by our Abpromise™ guarantee.</p> <p>In preparation for this, we have started to update the applications &amp; species that this product is Abpromise guaranteed for.</p> <p>We are also updating the applications &amp; species that this product has been “predicted to work with,” however this information is not covered by our Abpromise guarantee.</p> <p>Applications &amp; species from publications and Abreviews that have not been tested in our own labs or in those of our suppliers are not covered by the Abpromise guarantee.</p> <p>Please check that this product meets your needs before purchasing. If you have any questions, special requirements or concerns, please send us an inquiry and/or contact our Support team</p>

ahead of purchase. Recommended alternatives for this product can be found below, as well as customer reviews and Q&As.

## Properties

---

<b>Form</b>	Liquid
<b>Storage instructions</b>	Shipped at 4°C. Store at +4°C short term (1-2 weeks). Upon delivery aliquot. Store at -20°C long term. Avoid freeze / thaw cycle.
<b>Storage buffer</b>	pH: 7.30 Preservative: 0.02% Sodium azide Constituents: PBS, 50% Glycerol (glycerin, glycerine)
<b>Purity</b>	Immunogen affinity purified
<b>Clonality</b>	Polyclonal
<b>Isotype</b>	IgG

## Applications

---

Our [Abpromise guarantee](#) covers the use of **ab230215** in the following tested applications.

The application notes include recommended starting dilutions; optimal dilutions/concentrations should be determined by the end user.

Application	Abreviews	Notes
IHC-P		1/20 - 1/200.
WB		1/500 - 1/2000. Predicted molecular weight: 16,22 kDa.
ICC/IF		1/50 - 1/200.

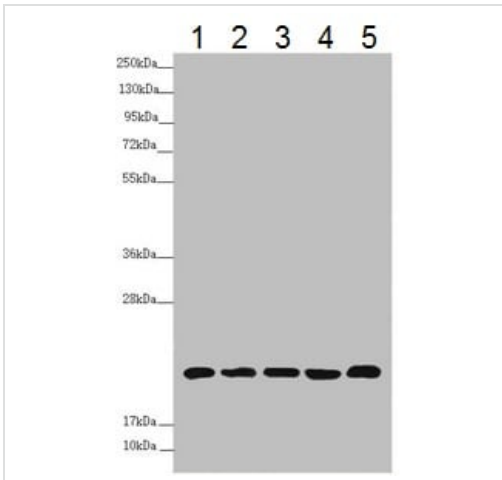
## Target

---

<b>Function</b>	Accessory subunit of the mitochondrial membrane respiratory chain NADH dehydrogenase (Complex I), that is believed not to be involved in catalysis. Complex I functions in the transfer of electrons from NADH to the respiratory chain. The immediate electron acceptor for the enzyme is believed to be ubiquinone.
<b>Sequence similarities</b>	Belongs to the complex I NDUF5 subunit family.
<b>Cellular localization</b>	Mitochondrion inner membrane.

## Images

---



Western blot - Anti-NDUF5 antibody (ab230215)

**All lanes** : Anti-NDUF5 antibody (ab230215) at 1/500 dilution

**Lane 1** : Mouse heart tissue lysate

**Lane 2** : Mouse kidney tissue lysate

**Lane 3** : HEK-293T (human epithelial cell line from embryonic kidney transformed with large T antigen) whole cell lysate

**Lane 4** : Jurkat (human T cell leukemia cell line from peripheral blood) whole cell lysate

**Lane 5** : MCF7 (human breast adenocarcinoma cell line) whole cell lysate

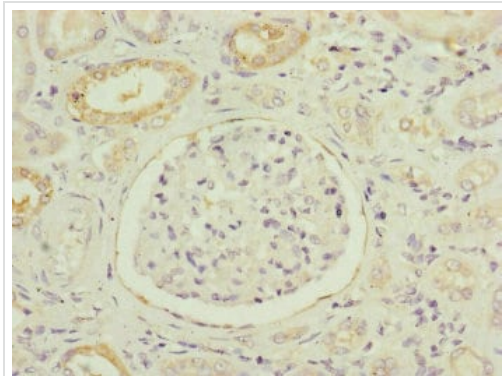
**Secondary**

**All lanes** : Goat polyclonal to rabbit IgG at 1/10000 dilution

**Predicted band size:** 16,22 kDa

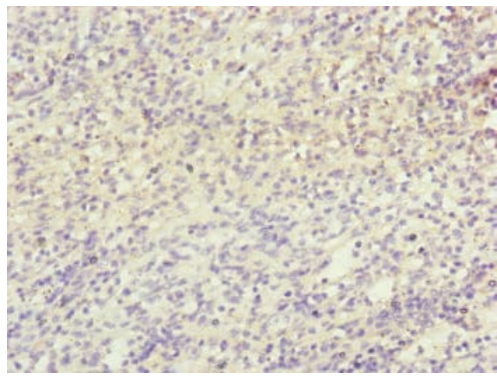
**Observed band size:** 22 kDa

[why is the actual band size different from the predicted?](#)



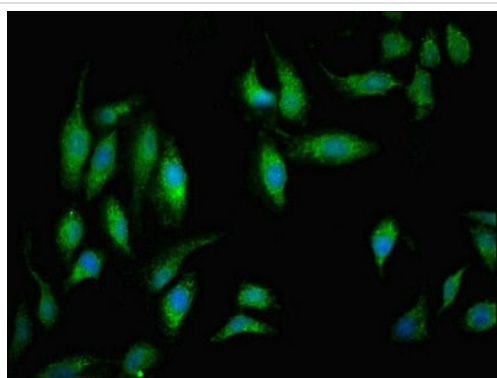
Immunohistochemistry (Formalin/PFA-fixed paraffin-embedded sections) - Anti-NDUF5 antibody (ab230215)

Paraffin-embedded human kidney tissue stained for NDUF5 using ab230215 at 1/100 dilution in immunohistochemical analysis.



Immunohistochemistry (Formalin/PFA-fixed paraffin-embedded sections) - Anti-NDUF5 antibody (ab230215)

Paraffin-embedded human spleen tissue stained for NDUF5 using ab230215 at 1/100 dilution in immunohistochemical analysis.



Immunocytochemistry/ Immunofluorescence - Anti-NDUF5 antibody (ab230215)

HeLa (human epithelial cell line from cervix adenocarcinoma) cells stained for NDUF5 (green) using ab230215 at 1/100 dilution in ICC/IF, followed by an Alexa Fluor<sup>®</sup>488-conjugated Goat anti-Rabbit IgG (H+L).

**Please note:** All products are "FOR RESEARCH USE ONLY. NOT FOR USE IN DIAGNOSTIC PROCEDURES"

#### **Our Abpromise to you: Quality guaranteed and expert technical support**

---

- Replacement or refund for products not performing as stated on the datasheet
- Valid for 12 months from date of delivery
- Response to your inquiry within 24 hours
  
- We provide support in Chinese, English, French, German, Japanese and Spanish
- Extensive multi-media technical resources to help you
- We investigate all quality concerns to ensure our products perform to the highest standards

If the product does not perform as described on this datasheet, we will offer a refund or replacement. For full details of the Abpromise, please visit <https://www.abcam.com/abpromise> or contact our technical team.

### **Terms and conditions**

---

- Guarantee only valid for products bought direct from Abcam or one of our authorized distributors