

Product datasheet

Anti-Ndufs4 antibody [2C7CD4AG3] ab87399

★★★★★ 5 Abreviews 13 References 2 Images

Overview

Product name	Anti-Ndufs4 antibody [2C7CD4AG3]
Description	Mouse monoclonal [2C7CD4AG3] to Ndufs4
Host species	Mouse
Tested applications	Suitable for: Flow Cyt, WB
Species reactivity	Reacts with: Mouse, Rat, Cow, Human
Immunogen	Recombinant full length protein. This information is considered to be commercially sensitive.
General notes	<p>This antibody clone is manufactured by Abcam.</p> <p>Product was previously marketed under the MitoSciences sub-brand.</p> <p>If you require this antibody in a particular buffer formulation or a particular conjugate for your experiments, please contact orders@abcam.com or you can find further information here.</p>

Properties

Form	Liquid
Storage instructions	Shipped at 4°C. Store at +4°C. Do Not Freeze.
Storage buffer	Preservative: 0.02% Sodium azide Constituents: HEPES, Sodium chloride
Purity	IgG fraction
Purification notes	Near homogeneity as judged by SDS-PAGE. The antibody was produced in vitro using hybridomas grown in serum-free medium, and then purified by biochemical fractionation.
Clonality	Monoclonal
Clone number	2C7CD4AG3
Isotype	IgG1
Light chain type	kappa

Applications

Our [Abpromise guarantee](#) covers the use of **ab87399** in the following tested applications.

The application notes include recommended starting dilutions; optimal dilutions/concentrations should be determined by the end user.

Application	Abreviews	Notes
Flow Cyt	★★★★☆	Use 1µg for 10 ⁶ cells. ab170190 - Mouse monoclonal IgG1, is suitable for use as an isotype control with this antibody.
WB	★★★★☆	Use a concentration of 1 µg/ml. Detects a band of approximately 20 kDa (predicted molecular weight: 20 kDa).

Target

Function

Accessory subunit of the mitochondrial membrane respiratory chain NADH dehydrogenase (Complex I), that is believed not to be involved in catalysis. Complex I functions in the transfer of electrons from NADH to the respiratory chain. The immediate electron acceptor for the enzyme is believed to be ubiquinone.

Involvement in disease

Defects in *NDUFS4* are a cause of mitochondrial complex I deficiency (MT-C1D) [MIM:252010]. A disorder of the mitochondrial respiratory chain that causes a wide range of clinical disorders, from lethal neonatal disease to adult-onset neurodegenerative disorders. Phenotypes include macrocephaly with progressive leukodystrophy, non-specific encephalopathy, cardiomyopathy, myopathy, liver disease, Leigh syndrome, Leber hereditary optic neuropathy, and some forms of Parkinson disease.

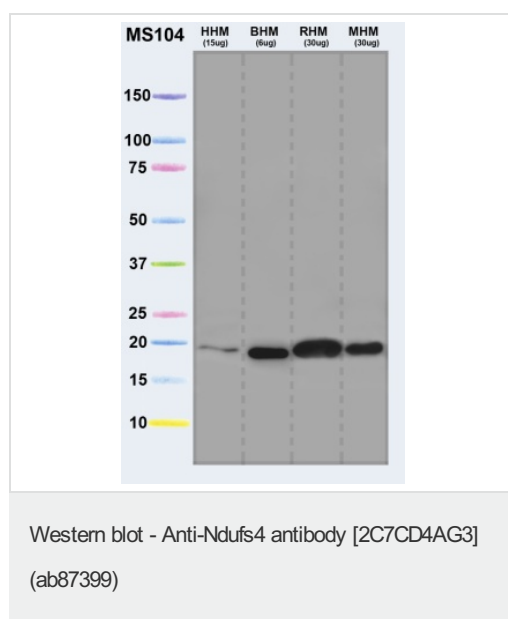
Sequence similarities

Belongs to the complex I *NDUFS4* subunit family.

Cellular localization

Mitochondrion inner membrane.

Images



All lanes : Anti-Ndufs4 antibody [2C7CD4AG3] (ab87399)

Lane 1 : Isolated mitochondria from human heart at 15 µg

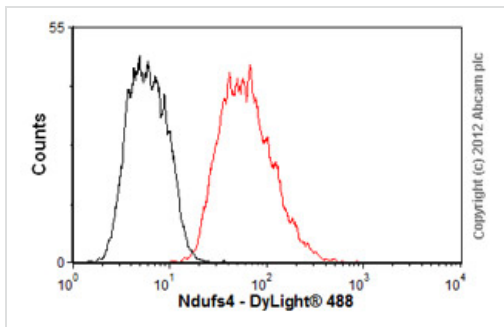
Lane 2 : Isolated mitochondria from bovine heart at 6 µg

Lane 3 : Isolated mitochondria from rat heart at 30 µg

Lane 4 : Isolated mitochondria from mouse heart at 30 µg

Predicted band size: 20 kDa

Observed band size: 20 kDa



Flow Cytometry - Anti-Ndufs4 antibody
[2C7CD4AG3] (ab87399)

Overlay histogram showing HepG2 cells stained with ab87399 (red line). The cells were fixed with 80% methanol (5 min) and then permeabilized with 0.1% PBS-Tween for 20 min. The cells were then incubated in 1x PBS / 10% normal goat serum / 0.3M glycine to block non-specific protein-protein interactions followed by the antibody (ab87399, 1µg/1x10⁶ cells) for 30 min at 22°C. The secondary antibody used was DyLight® 488 goat anti-mouse IgG (H+L) (ab96879) at 1/500 dilution for 30 min at 22°C. Isotype control antibody (black line) was Mouse IgG1 [ICIGG1] (ab91353, 2µg/1x10⁶ cells) used under the same conditions. Acquisition of >5,000 events was performed.

Please note: All products are "FOR RESEARCH USE ONLY. NOT FOR USE IN DIAGNOSTIC PROCEDURES"

Our Abpromise to you: Quality guaranteed and expert technical support

- Replacement or refund for products not performing as stated on the datasheet
- Valid for 12 months from date of delivery
- Response to your inquiry within 24 hours
- We provide support in Chinese, English, French, German, Japanese and Spanish
- Extensive multi-media technical resources to help you
- We investigate all quality concerns to ensure our products perform to the highest standards

If the product does not perform as described on this datasheet, we will offer a refund or replacement. For full details of the Abpromise, please visit <https://www.abcam.com/abpromise> or contact our technical team.

Terms and conditions

- Guarantee only valid for products bought direct from Abcam or one of our authorized distributors