

Product datasheet

Anti-NECAP2 antibody [EPR11744] ab175210

Recombinant RabMAb

2 Images

Overview

Product name	Anti-NECAP2 antibody [EPR11744]
Description	Rabbit monoclonal [EPR11744] to NECAP2
Host species	Rabbit
Tested applications	Suitable for: WB, IP Unsuitable for: Flow Cyt, ICC/IF or IHC-P
Species reactivity	Reacts with: Mouse, Rat, Human
Immunogen	Synthetic peptide within Human NECAP2 aa 50-150 (Cysteine residue). The exact sequence is proprietary. Database link: Q9NVZ3
Positive control	Human fetal kidney, fetal liver tissue lysate and C6, RAW 264.7, PC 12 and NIH 3T3 cell lysate
General notes	

Our RabMAb[®] technology is a patented hybridoma-based technology for making rabbit monoclonal antibodies. For details on our patents, please refer to [RabMAb[®] patents](#).

This product is a [recombinant rabbit monoclonal antibody](#).

Properties

Form	Liquid
Storage instructions	Shipped at 4°C. Store at +4°C short term (1-2 weeks). Upon delivery aliquot. Store at -20°C long term. Avoid freeze / thaw cycle.
Storage buffer	pH: 7.20 Preservative: 0.01% Sodium azide Constituents: 9% PBS, 40% Glycerol, 0.05% BSA, 50% Tissue culture supernatant
Purity	Tissue culture supernatant
Clonality	Monoclonal
Clone number	EPR11744
Isotype	IgG

Applications

Our [Abpromise guarantee](#) covers the use of **ab175210** in the following tested applications.

The application notes include recommended starting dilutions; optimal dilutions/concentrations should be determined by the end user.

Application	Abreviews	Notes
WB		1/1000 - 1/5000. Predicted molecular weight: 28 kDa.
IP		1/10 - 1/100.

Application notes Is unsuitable for Flow Cyt, ICC/IF or IHC-P.

Target

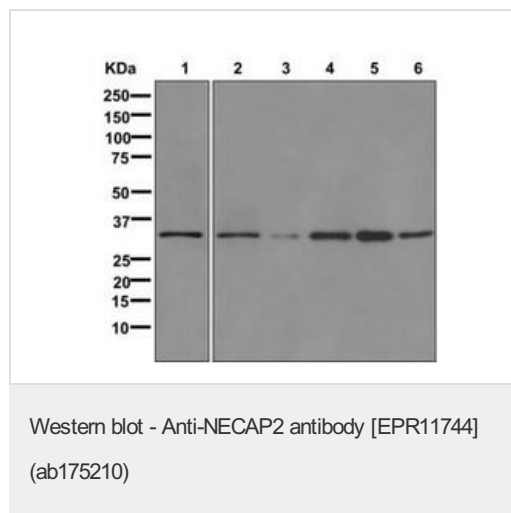
Function Involved in endocytosis.

Sequence similarities Belongs to the NECAP family.

Domain The WXXF motifs mediate binding of accessory proteins to the ear-domain of AP-1, GGAs and AP-2 through hydrophobic interactions. Selective binding to the GAE domains of AP-1 or to the alpha-ear domain of AP-2 is tuned by the acidic context surrounding the motif and the properties of the second residue of the motif itself.

Cellular localization Cytoplasmic vesicle, clathrin-coated vesicle membrane. Cell membrane. Colocalizes with AP-2 at the plasma membrane.

Images



All lanes : Anti-NECAP2 antibody [EPR11744] (ab175210) at 1/1000 dilution

Lane 1 : Fetal kidney tissue lysate

Lane 2 : Fetal liver tissue lysate

Lane 3 : C6 cell lysate

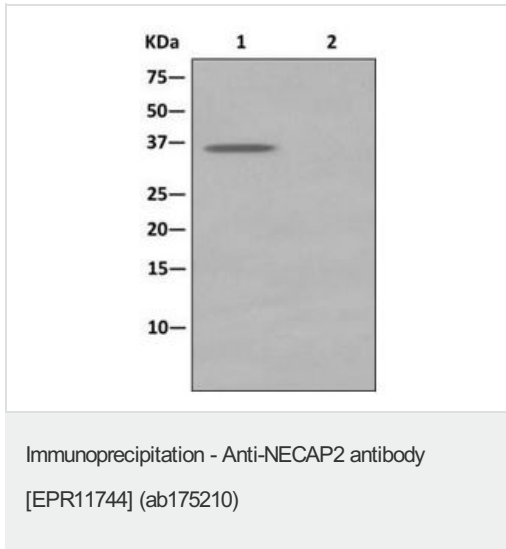
Lane 4 : RAW 264.7 cell lysate

Lane 5 : PC 12 cell lysate

Lane 6 : NIH 3T3 cell lysate

Lysates/proteins at 10 µg per lane.

Predicted band size: 28 kDa



Western blot analysis on immunoprecipitation pellet from fetal liver tissue lysate (lane 1) labeling NECAP2 with ab175210 at 1/10 dilution or 1X PBS (lane 2) negative control. HRP-conjugated anti-Rabbit IgG preferentially detecting the non-reduced form of Rabbit IgG.

Please note: All products are "FOR RESEARCH USE ONLY AND ARE NOT INTENDED FOR DIAGNOSTIC OR THERAPEUTIC USE"

Our Abpromise to you: Quality guaranteed and expert technical support

- Replacement or refund for products not performing as stated on the datasheet
- Valid for 12 months from date of delivery
- Response to your inquiry within 24 hours
- We provide support in Chinese, English, French, German, Japanese and Spanish
- Extensive multi-media technical resources to help you
- We investigate all quality concerns to ensure our products perform to the highest standards

If the product does not perform as described on this datasheet, we will offer a refund or replacement. For full details of the Abpromise, please visit <https://www.abcam.com/abpromise> or contact our technical team.

Terms and conditions

- Guarantee only valid for products bought direct from Abcam or one of our authorized distributors