

Product datasheet

Anti-Nectin 2 antibody [B-C12] ab47171

[1 References](#) [2 Images](#)

Overview

Product name	Anti-Nectin 2 antibody [B-C12]
Description	Mouse monoclonal [B-C12] to Nectin 2
Host species	Mouse
Tested applications	Suitable for: IHC-Fr, ICC/IF, Flow Cyt
Species reactivity	Reacts with: Human
Immunogen	KG-1 cell line
Positive control	KG-1 cell line
General notes	This product was changed from ascites to tissue culture supernatant on 4 th April 2019. Please note that the dilutions may need to be adjusted accordingly. If you have any questions, please do not hesitate to contact our scientific support team.

Properties

Form	Liquid
Storage instructions	Shipped at 4°C. Store at +4°C short term (1-2 weeks). Upon delivery aliquot. Store at -20°C or -80°C. Avoid freeze / thaw cycle.
Storage buffer	Constituent: PBS
Purity	Tissue culture supernatant
Clonality	Monoclonal
Clone number	B-C12
Myeloma	x63-Ag8.653
Isotype	IgG2b

Applications

Our [Abpromise guarantee](#) covers the use of **ab47171** in the following tested applications.

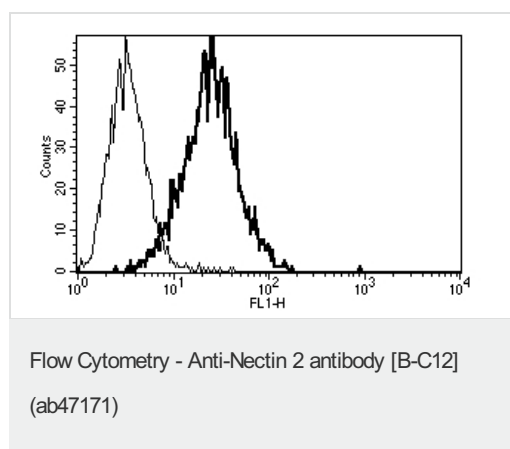
The application notes include recommended starting dilutions; optimal dilutions/concentrations should be determined by the end user.

Application	Abreviews	Notes
IHC-Fr		Use at an assay dependent concentration.
ICC/IF		Use a concentration of 1 - 10 µg/ml.
Flow Cyt		Use at an assay dependent concentration. ab170192 - Mouse monoclonal IgG2b, is suitable for use as an isotype control with this antibody.

Target

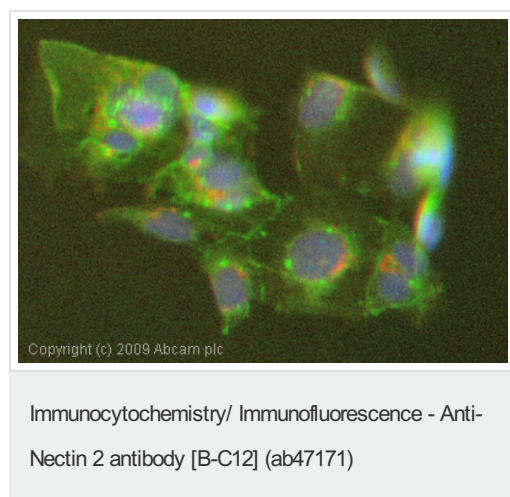
Function	Probable cell adhesion protein.
Tissue specificity	Ubiquitous.
Sequence similarities	Belongs to the nectin family. Contains 2 Ig-like C2-type (immunoglobulin-like) domains. Contains 1 Ig-like V-type (immunoglobulin-like) domain.
Cellular localization	Cell membrane.

Images



A typical staining pattern with ab47171 monoclonal antibody of KG-1 cell line.

This image was generated using the ascites version of the product.



ICC/IF image of ab47171 stained Hek293 cells. The cells were 4% PFA fixed (10 min) and then incubated in 1%BSA / 10% normal goat serum / 0.3M glycine in 0.1% PBS-Tween for 1h to permeabilise the cells and block non-specific protein-protein interactions. The cells were then incubated with the antibody (ab47171, 1µg/ml) overnight at +4°C. The secondary antibody (green) was Alexa Fluor® 488 goat anti-mouse IgG (H+L) used at a 1/1000 dilution for 1h. Alexa Fluor® 594 WGA was used to label plasma membranes (red) at a 1/200 dilution for 1h. DAPI was used to stain the cell nuclei (blue) at a concentration of 1.43µM.

This image was generated using the ascites version of the product.

Please note: All products are "FOR RESEARCH USE ONLY. NOT FOR USE IN DIAGNOSTIC PROCEDURES"

Our Abpromise to you: Quality guaranteed and expert technical support

- Replacement or refund for products not performing as stated on the datasheet
- Valid for 12 months from date of delivery
- Response to your inquiry within 24 hours

- We provide support in Chinese, English, French, German, Japanese and Spanish
- Extensive multi-media technical resources to help you
- We investigate all quality concerns to ensure our products perform to the highest standards

If the product does not perform as described on this datasheet, we will offer a refund or replacement. For full details of the Abpromise, please visit <https://www.abcam.com/abpromise> or contact our technical team.

Terms and conditions

- Guarantee only valid for products bought direct from Abcam or one of our authorized distributors