


Product datasheet

Anti-NEDD8 antibody ab131123

2 Images

Overview

<b>Product name</b>	Anti-NEDD8 antibody
<b>Description</b>	Rabbit polyclonal to NEDD8
<b>Host species</b>	Rabbit
<b>Tested applications</b>	<b>Suitable for:</b> WB, ELISA, IHC-P
<b>Species reactivity</b>	<b>Reacts with:</b> Human <b>Predicted to work with:</b> Mouse, Rat 
<b>Immunogen</b>	Synthetic peptide corresponding to a region within the N terminus of Human NEDD8.
<b>Positive control</b>	Human small intestine tissue; Jurkat cell extracts.

Properties

<b>Form</b>	Liquid
<b>Storage instructions</b>	Shipped at 4°C. Store at +4°C short term (1-2 weeks). Store at -20°C long term.
<b>Storage buffer</b>	pH: 7.40 Preservative: 0.02% Sodium azide Constituents: 49% PBS, 50% Glycerol, 0.88% Sodium chloride Note: without Mg <sup>2+</sup> and Ca <sup>2+</sup>
<b>Purity</b>	Immunogen affinity purified
<b>Clonality</b>	Polyclonal
<b>Isotype</b>	IgG

Applications

Our [Abpromise guarantee](#) covers the use of **ab131123** in the following tested applications.

The application notes include recommended starting dilutions; optimal dilutions/concentrations should be determined by the end user.

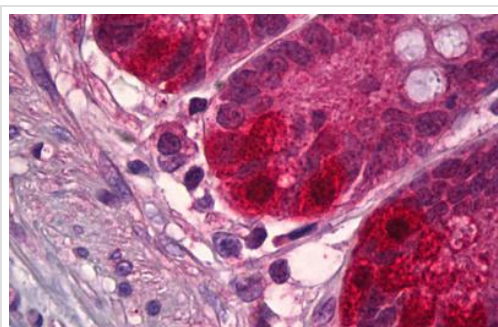
Application	Abreviews	Notes
WB		1/500 - 1/1000. Predicted molecular weight: 9 kDa.
ELISA		1/5000.

Application	Abreviews	Notes
IHC-P		1/100.

## Target

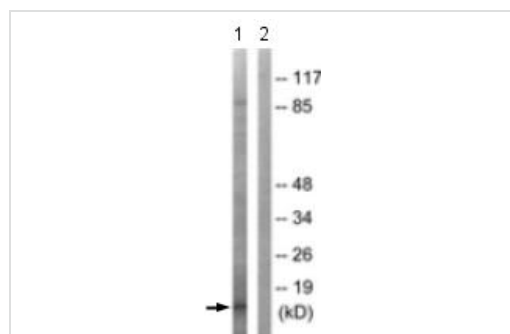
<b>Function</b>	Ubiquitin-like protein which plays an important role in cell cycle control and embryogenesis. Covalent attachment to its substrates requires prior activation by the E1 complex UBE1C-APPBP1 and linkage to the E2 enzyme UBE2M. Attachment of NEDD8 to cullins activates their associated E3 ubiquitin ligase activity, and thus promotes polyubiquitination and proteasomal degradation of cyclins and other regulatory proteins.
<b>Tissue specificity</b>	Highly expressed in heart, skeletal muscle, spleen, thymus, prostate, testis, ovary, colon and leukocytes.
<b>Sequence similarities</b>	Belongs to the ubiquitin family.
<b>Post-translational modifications</b>	Cleavage of precursor form by UCHL3 or SENP8 is necessary for function.
<b>Cellular localization</b>	Nucleus. Mainly nuclear.

## Images



Immunohistochemistry (Formalin/PFA-fixed paraffin-embedded sections) - Anti-NEDD8 antibody (ab131123)

Immunohistochemical analysis of formalin-fixed, paraffin-embedded Human small intestine tissue, staining NEDD8 using ab131123 at a 1/100 dilution. This was followed by treatment with a biotinylated goat anti-rabbit IgG secondary antibody, alkaline phosphatase-streptavidin and chromogen.



Western blot - Anti-NEDD8 antibody (ab131123)

**All lanes :** Anti-NEDD8 antibody (ab131123) at 1/500 dilution

**Lane 1 :** Jurkat cell extract

**Lane 2 :** Jurkat cell extract with synthesized NEDD8 blocking peptide

**Predicted band size:** 9 kDa

**Please note:** All products are "FOR RESEARCH USE ONLY. NOT FOR USE IN DIAGNOSTIC PROCEDURES"

### **Our Abpromise to you: Quality guaranteed and expert technical support**

---

- Replacement or refund for products not performing as stated on the datasheet
- Valid for 12 months from date of delivery
- Response to your inquiry within 24 hours
  
- We provide support in Chinese, English, French, German, Japanese and Spanish
- Extensive multi-media technical resources to help you
- We investigate all quality concerns to ensure our products perform to the highest standards

If the product does not perform as described on this datasheet, we will offer a refund or replacement. For full details of the Abpromise, please visit <https://www.abcam.com/abpromise> or contact our technical team.

### **Terms and conditions**

---

- Guarantee only valid for products bought direct from Abcam or one of our authorized distributors