

Product datasheet

Anti-NEK1 antibody ab198699

2 Images

Overview

<b>Product name</b>	Anti-NEK1 antibody
<b>Description</b>	Rabbit polyclonal to NEK1
<b>Host species</b>	Rabbit
<b>Tested applications</b>	<b>Suitable for:</b> IHC-P
<b>Species reactivity</b>	<b>Reacts with:</b> Mouse, Human
<b>Immunogen</b>	Synthetic peptide within Human NEK1 (internal sequence). The exact sequence is proprietary. from Isoform 3. NCBI Accession No. NP_001186326. Database link: <a href="#">Q96PY6-3</a>
<b>Positive control</b>	Human lymphoma and lung cancer tissues.

Properties

<b>Form</b>	Liquid
<b>Storage instructions</b>	Shipped at 4°C. Store at +4°C short term (1-2 weeks). Upon delivery aliquot. Store at -20°C long term. Avoid freeze / thaw cycle.
<b>Storage buffer</b>	pH: 7.3 Preservative: 0.05% Sodium azide Constituents: 50% Glycerol, 49% PBS
<b>Purity</b>	Immunogen affinity purified
<b>Clonality</b>	Polyclonal
<b>Isotype</b>	IgG

Applications

Our [Abpromise guarantee](#) covers the use of **ab198699** in the following tested applications.

The application notes include recommended starting dilutions; optimal dilutions/concentrations should be determined by the end user.

Application	Abreviews	Notes
IHC-P		1/25 - 1/100. Perform heat mediated antigen retrieval with citrate buffer pH 6 before commencing with IHC staining protocol.

## Target

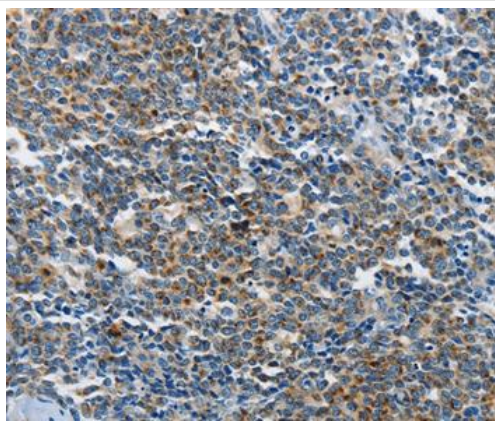
---

<b>Function</b>	Phosphorylates serines and threonines, but also appears to possess tyrosine kinase activity. Implicated in the control of meiosis (By similarity). Involved in cilium assembly. In response to injury that includes DNA damage, NEK1 phosphorylates VDAC1 to limit mitochondrial cell death.
<b>Tissue specificity</b>	High fetal expression in the brain and kidney.
<b>Involvement in disease</b>	Short-rib thoracic dysplasia 6 with or without polydactyly
<b>Sequence similarities</b>	Belongs to the protein kinase superfamily. NEK Ser/Thr protein kinase family. NIMA subfamily. Contains 1 protein kinase domain.
<b>Cellular localization</b>	Nucleus. Cytoplasm, cytoskeleton, microtubule organizing center, centrosome. Associated with the pericentriolar material. Localizes to centrosome during interphase and mitosis (By similarity).

---

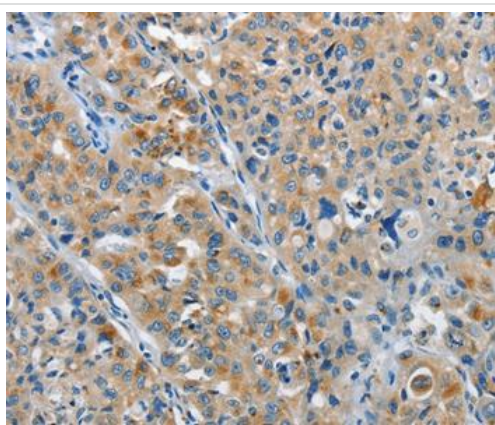
## Images

---



Immunohistochemical analysis of paraffin-embedded Human lymphoma tissue labeling NEK1 using ab198699 at a 1/25 dilution.

Immunohistochemistry (Formalin/PFA-fixed paraffin-embedded sections) - Anti-NEK1 antibody (ab198699)



Immunohistochemical analysis of paraffin-embedded Human lung cancer tissue labeling NEK1 using ab198699 at a 1/25 dilution.

Immunohistochemistry (Formalin/PFA-fixed paraffin-embedded sections) - Anti-NEK1 antibody (ab198699)

**Please note:** All products are "FOR RESEARCH USE ONLY. NOT FOR USE IN DIAGNOSTIC PROCEDURES"

### **Our Abpromise to you: Quality guaranteed and expert technical support**

---

- Replacement or refund for products not performing as stated on the datasheet
- Valid for 12 months from date of delivery
- Response to your inquiry within 24 hours
- We provide support in Chinese, English, French, German, Japanese and Spanish
- Extensive multi-media technical resources to help you
- We investigate all quality concerns to ensure our products perform to the highest standards

If the product does not perform as described on this datasheet, we will offer a refund or replacement. For full details of the Abpromise, please visit <https://www.abcam.com/abpromise> or contact our technical team.

### **Terms and conditions**

---

- Guarantee only valid for products bought direct from Abcam or one of our authorized distributors