



Product datasheet

Anti-NEK6 antibody [OT12H7] ab117986

7 Images

Overview

<b>Product name</b>	Anti-NEK6 antibody [OT12H7]
<b>Description</b>	Mouse monoclonal [OT12H7] to NEK6
<b>Host species</b>	Mouse
<b>Tested applications</b>	<b>Suitable for:</b> WB, IHC-P
<b>Species reactivity</b>	<b>Reacts with:</b> Human
<b>Immunogen</b>	<p>Recombinant full length protein corresponding to Human NEK6 aa 1-313. Sequence:</p> <p>MAGQPGHMPHGGSSNNLCHTLGPVHPPDPQRHPNTL            SFRCSLADFQIEKK            IGRGQFSEVYKATCLLDRKTVALKKVQIFEMMDAKARQ            DCVKEIGLLKQL            NHPNIIKYLDSFIEDNELNVLELADAGDLSQMIKYFKKQ            KRLIPERTVW            KYFVQLCSAVEHMHSRRVMHRDIKPANVFITATGVVKL            GDLGLGRFFSSE            TTAHSLVGTPYYMSPERIHENGYNFKSDIWSLGCLLY            EMAALQSPFYGD            KMNLFSLCQKIEQCDYPLPGEHYSEKLRELVSMCICP            DPHQRPDIGYVH QVAKQMHIWMSST</p> <p>Database link: <a href="#">Q9HC98</a></p> <p style="text-align: right;"> <a href="#">Run BLAST with</a>       <a href="#">Run BLAST with</a></p>
<b>Positive control</b>	WB: HEK-293T cell lysate transfected with pCMV6-ENTRY NEK6 cDNA. IHC-P: Human breast adenocarcinoma, kidney carcinoma, ovary, ovary adenocarcinoma, thyroid carcinoma and endometrium tissues.
<b>General notes</b>	Clone OT12H7 (formerly 2H7).

Properties

<b>Form</b>	Liquid
<b>Storage instructions</b>	Shipped at 4°C. Store at +4°C short term (1-2 weeks). Upon delivery aliquot. Store at -20°C. Avoid freeze / thaw cycle.

<b>Storage buffer</b>	pH: 7.30 Preservative: 0.02% Sodium azide Constituents: PBS, 1% BSA, 50% Glycerol
<b>Purity</b>	Protein G purified
<b>Purification notes</b>	ab117986 was purified from mouse ascites fluids by affinity chromatography.
<b>Clonality</b>	Monoclonal
<b>Clone number</b>	OT12H7
<b>Isotype</b>	IgG1

## Applications

Our [Abpromise guarantee](#) covers the use of **ab117986** in the following tested applications.

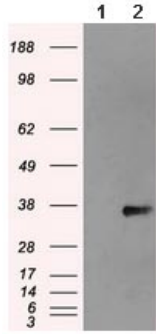
The application notes include recommended starting dilutions; optimal dilutions/concentrations should be determined by the end user.

Application	Abreviews	Notes
WB		1/1000. Predicted molecular weight: 36 kDa.
IHC-P		1/50.

## Target

<b>Function</b>	Activated during M phase. Required for chromosome segregation at metaphase-anaphase transition and therefore for mitotic progression. Inhibition of activity results in apoptosis. Phosphorylates KIF11 to promote mitotic spindle formation.
<b>Tissue specificity</b>	Ubiquitous, with highest expression in heart and skeletal muscle.
<b>Sequence similarities</b>	Belongs to the protein kinase superfamily. NEK Ser/Thr protein kinase family. NIMA subfamily. Contains 1 protein kinase domain.
<b>Post-translational modifications</b>	Autophosphorylated.
<b>Cellular localization</b>	Cytoplasm. Nucleus.

## Images



Western blot - Anti-NEK6 antibody [OTI2H7] (ab117986)

**All lanes :** Anti-NEK6 antibody [OTI2H7] (ab117986) at 1/1000 dilution

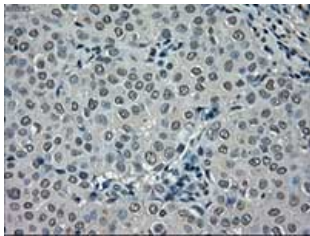
**Lane 1 :** HEK293T cell lysate transfected with pCMV6-ENTRY control

**Lane 2 :** HEK293T cell lysate transfected with pCMV6-ENTRY NEK6 cDNA

Lysates/proteins at 5 µg per lane.

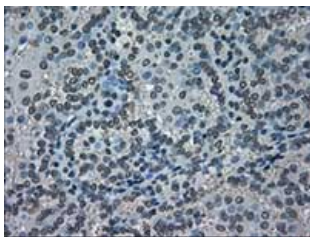
**Predicted band size:** 36 kDa

HEK293T cell lysates were generated from transient transfection of the cDNA clone (RC203609)



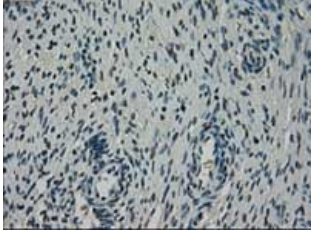
Immunohistochemistry (Formalin/PFA-fixed paraffin-embedded sections) - Anti-NEK6 antibody [OTI2H7] (ab117986)

ab117986, at 1/50 dilution, staining NEK6 in paraffin-embedded Human breast adenocarcinoma tissue by Immunohistochemistry.



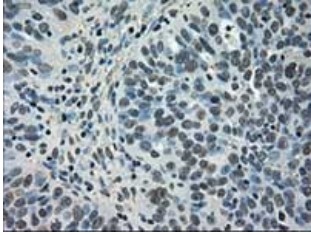
Immunohistochemistry (Formalin/PFA-fixed paraffin-embedded sections) - Anti-NEK6 antibody [OTI2H7] (ab117986)

ab117986, at 1/50 dilution, staining NEK6 in paraffin-embedded Human kidney carcinoma tissue by Immunohistochemistry.



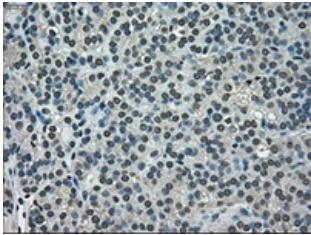
Immunohistochemistry (Formalin/PFA-fixed paraffin-embedded sections) - Anti-NEK6 antibody [OT12H7] (ab117986)

ab117986, at 1/50 dilution, staining NEK6 in paraffin-embedded Human ovary tissue by Immunohistochemistry.



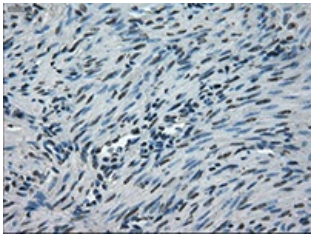
Immunohistochemistry (Formalin/PFA-fixed paraffin-embedded sections) - Anti-NEK6 antibody [OT12H7] (ab117986)

ab117986, at 1/50 dilution, staining NEK6 in paraffin-embedded Human ovary adenocarcinoma tissue by Immunohistochemistry.



Immunohistochemistry (Formalin/PFA-fixed paraffin-embedded sections) - Anti-NEK6 antibody [OT12H7] (ab117986)

ab117986, at 1/50 dilution, staining NEK6 in paraffin-embedded Human thyroid carcinoma tissue by Immunohistochemistry.



Immunohistochemistry (Formalin/PFA-fixed paraffin-embedded sections) - Anti-NEK6 antibody [OT12H7] (ab117986)

ab117986, at 1/50 dilution, staining NEK6 in paraffin-embedded Human endometrium tissue by Immunohistochemistry.

## **Our Abpromise to you: Quality guaranteed and expert technical support**

---

- Replacement or refund for products not performing as stated on the datasheet
- Valid for 12 months from date of delivery
- Response to your inquiry within 24 hours
  
- We provide support in Chinese, English, French, German, Japanese and Spanish
- Extensive multi-media technical resources to help you
- We investigate all quality concerns to ensure our products perform to the highest standards

If the product does not perform as described on this datasheet, we will offer a refund or replacement. For full details of the Abpromise, please visit <https://www.abcam.com/abpromise> or contact our technical team.

## **Terms and conditions**

---

- Guarantee only valid for products bought direct from Abcam or one of our authorized distributors