

Product datasheet

Anti-Nephrin antibody ab92887

1 Image

Overview

Product name	Anti-Nephrin antibody
Description	Rabbit polyclonal to Nephrin
Host species	Rabbit
Tested applications	Suitable for: IHC-P
Species reactivity	Reacts with: Human
Immunogen	Synthetic peptide within Human Nephrin aa 750-850 (internal sequence). The exact sequence is proprietary. Database link: O60500
Positive control	Human kidney tissue

Properties

Form	Liquid
Storage instructions	Shipped at 4°C. Store at +4°C.
Storage buffer	pH: 7.6 Preservative: 0.1% Sodium azide Constituents: PBS, 1% BSA
Purity	Immunogen affinity purified
Clonality	Polyclonal
Isotype	IgG

Applications

Our [Abpromise guarantee](#) covers the use of **ab92887** in the following tested applications.

The application notes include recommended starting dilutions; optimal dilutions/concentrations should be determined by the end user.

Application	Abreviews	Notes
-------------	-----------	-------

IHC-P

Application notes	IHC-P: 1/50. Perform heat mediated antigen retrieval before commencing with IHC staining
--------------------------	--

protocol by boiling tissue section in 10mM Citrate buffer, pH 6.0 for 10-20 min followed by cooling at RT for 20 min.

Not yet tested in other applications.

Optimal dilutions/concentrations should be determined by the end user.

Target

Function

Seems to play a role in the development or function of the kidney glomerular filtration barrier. Regulates glomerular vascular permeability. May anchor the podocyte slit diaphragm to the actin cytoskeleton. Plays a role in skeletal muscle formation through regulation of myoblast fusion.

Tissue specificity

Specifically expressed in podocytes of kidney glomeruli.

Involvement in disease

Defects in NPHS1 are the cause of nephrotic syndrome type 1 (NPHS1) [MIM:256300]; also known as Finnish congenital nephrosis (CNF). A renal disease characterized clinically by proteinuria, hypoalbuminemia, hyperlipidemia, and edema. Kidney biopsies show non-specific histologic changes such as focal segmental glomerulosclerosis and diffuse mesangial proliferation. Some affected individuals have an inherited steroid-resistant form and progress to end-stage renal failure.

Sequence similarities

Belongs to the immunoglobulin superfamily.
Contains 1 fibronectin type-III domain.
Contains 8 Ig-like C2-type (immunoglobulin-like) domains.

Developmental stage

In 23-week-old embryo found in epithelial podocytes of the periphery of mature and developing glomeruli.

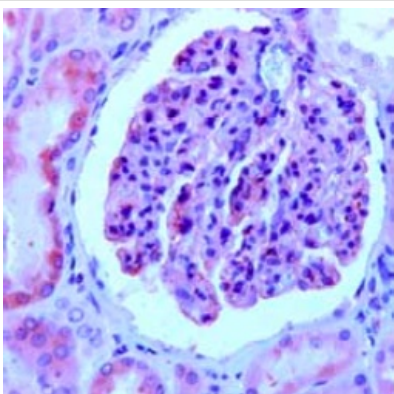
Post-translational modifications

Phosphorylated on tyrosine residues.

Cellular localization

Cell membrane. Predominantly located at podocyte slit diaphragm between podocyte foot processes. Also associated with podocyte apical plasma membrane.

Images



ab92887, at 1/50 dilution staining Nephhrin in formalin-fixed, paraffin-embedded Human kidney tissue.

Immunohistochemistry (Formalin/PFA-fixed paraffin-embedded sections) - Anti-Nephhrin antibody (ab92887)

Please note: All products are "FOR RESEARCH USE ONLY. NOT FOR USE IN DIAGNOSTIC PROCEDURES"

Our Abpromise to you: Quality guaranteed and expert technical support

- Replacement or refund for products not performing as stated on the datasheet
- Valid for 12 months from date of delivery
- Response to your inquiry within 24 hours

- We provide support in Chinese, English, French, German, Japanese and Spanish
- Extensive multi-media technical resources to help you
- We investigate all quality concerns to ensure our products perform to the highest standards

If the product does not perform as described on this datasheet, we will offer a refund or replacement. For full details of the Abpromise, please visit <https://www.abcam.com/abpromise> or contact our technical team.

Terms and conditions

- Guarantee only valid for products bought direct from Abcam or one of our authorized distributors