

## Product datasheet

# Anti-Neuropeptide Y antibody [8] ab112473

★★★★★ 1 Abreviews 5 References 5 Images

### Overview

<b>Product name</b>	Anti-Neuropeptide Y antibody [8]
<b>Description</b>	Mouse monoclonal [8] to Neuropeptide Y
<b>Host species</b>	Mouse
<b>Specificity</b>	Cross-reactivity with Neuropeptide Y(1-24), Neuropeptide Y (18-36), Peptide YY or Pancreatic Polypeptide was <0.2%.
<b>Tested applications</b>	<b>Suitable for:</b> IHC-P
<b>Species reactivity</b>	<b>Reacts with:</b> Mouse, Rat, Human
<b>Immunogen</b>	Synthetic peptide corresponding to a region within Human/Rat Neuropeptide Y adsorbed onto aluminum hydroxide gel.
<b>Epitope</b>	The epitope of ab112473 is probably around the mid-molecular region of Neuropeptide Y.
<b>Positive control</b>	Mouse brain tissue (fibres in the hilus of the hippocampus, following epileptic attack) Mouse brain tissue (interneurons in the cortex)
<b>General notes</b>	<p>Reproducibility is key to advancing scientific discovery and accelerating scientists' next breakthrough.</p> <p>Abcam is leading the way with our range of recombinant antibodies, knockout-validated antibodies and knockout cell lines, all of which support improved reproducibility.</p> <p>We are also planning to innovate the way in which we present recommended applications and species on our product datasheets, so that only applications &amp; species that have been tested in our own labs, our suppliers or by selected trusted collaborators are covered by our Abpromise™ guarantee.</p> <p>In preparation for this, we have started to update the applications &amp; species that this product is Abpromise guaranteed for.</p> <p>We are also updating the applications &amp; species that this product has been "predicted to work with," however this information is not covered by our Abpromise guarantee.</p> <p>Applications &amp; species from publications and Abreviews that have not been tested in our own labs or in those of our suppliers are not covered by the Abpromise guarantee.</p> <p>Please check that this product meets your needs before purchasing. If you have any questions, special requirements or concerns, please send us an inquiry and/or contact our Support team ahead of purchase. Recommended alternatives for this product can be found below, as well as customer reviews and Q&amp;As.</p>

## Properties

<b>Form</b>	Liquid
<b>Storage instructions</b>	Shipped at 4°C. Store at +4°C short term (1-2 weeks). Store at -20°C or -80°C. Avoid freeze / thaw cycle.
<b>Storage buffer</b>	pH: 7.40 Preservative: 0.1% Sodium azide Constituents: 2.9% Sodium chloride, 97% PBS
<b>Purity</b>	Protein G purified
<b>Clonality</b>	Monoclonal
<b>Clone number</b>	8
<b>Isotype</b>	IgG1
<b>Light chain type</b>	kappa

## Applications

Our [Abpromise guarantee](#) covers the use of **ab112473** in the following tested applications.

The application notes include recommended starting dilutions; optimal dilutions/concentrations should be determined by the end user.

Application	Abreviews	Notes
IHC-P	★★★★☆	1/1000.

## Target

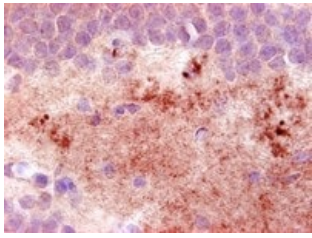
<b>Function</b>	NPY is implicated in the control of feeding and in secretion of gonadotrophin-release hormone.
<b>Tissue specificity</b>	One of the most abundant peptides in the nervous system. Also found in some chromaffin cells of the adrenal medulla.
<b>Sequence similarities</b>	Belongs to the NPY family.
<b>Cellular localization</b>	Secreted.

## Images



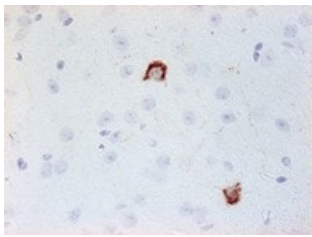
ab112473, at 1/1000, staining Neuropeptide Y in paraffin embedded Mouse brain tissue (fibres in the hilus of the hippocampus) from a mouse suffering an epileptic attack just before perfusion by Immunohistochemistry.

Immunohistochemistry (Formalin/PFA-fixed paraffin-embedded sections) - Anti-Neuropeptide Y antibody [8] (ab112473)



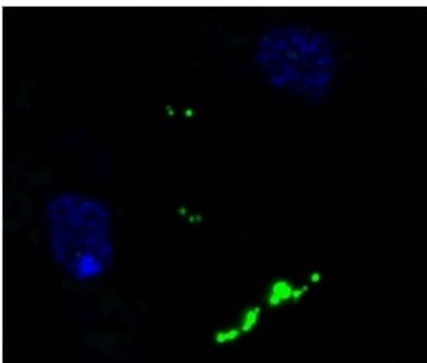
Immunohistochemistry (Formalin/PFA-fixed paraffin-embedded sections) - Anti-Neuropeptide Y antibody [8] (ab112473)

ab112473, at 1/1000, staining Neuropeptide Y in paraffin embedded Mouse brain tissue (fibres in the hilus of the hippocampus) from a mouse suffering an epileptic attack just before perfusion by Immunohistochemistry.



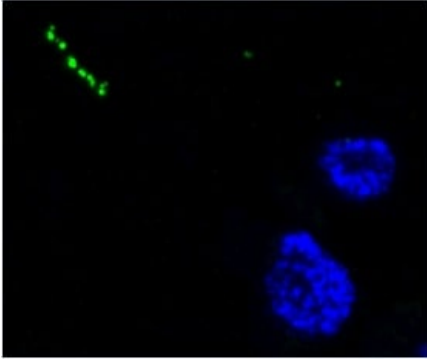
Immunohistochemistry (Formalin/PFA-fixed paraffin-embedded sections) - Anti-Neuropeptide Y antibody [8] (ab112473)

ab112473, at 1/1000, staining Neuropeptide Y in paraffin embedded Mouse brain tissue (interneurons in the cortex) by Immunohistochemistry.



Immunohistochemistry (Formalin/PFA-fixed paraffin-embedded sections) - Anti-Neuropeptide Y antibody [8] (ab112473)

Immunofluorescence images of tissue from human cerebral cortex, applying ab112473 to ultra thin sections (antibody: green, DAPI-stained nuclei: blue). The antibody labels NPY-positive processes in the neutrophil.



Immunofluorescence images of tissue from human cerebral cortex, applying ab112473 to ultra thin sections (antibody: green, DAPI-stained nuclei: blue). The antibody labels NPY-positive processes in the neutrophil.

Immunohistochemistry (Formalin/PFA-fixed paraffin-embedded sections) - Anti-Neuropeptide Y antibody [8] (ab112473)

**Please note:** All products are "FOR RESEARCH USE ONLY. NOT FOR USE IN DIAGNOSTIC PROCEDURES"

### Our Abpromise to you: Quality guaranteed and expert technical support

---

- Replacement or refund for products not performing as stated on the datasheet
- Valid for 12 months from date of delivery
- Response to your inquiry within 24 hours
- We provide support in Chinese, English, French, German, Japanese and Spanish
- Extensive multi-media technical resources to help you
- We investigate all quality concerns to ensure our products perform to the highest standards

If the product does not perform as described on this datasheet, we will offer a refund or replacement. For full details of the Abpromise, please visit <https://www.abcam.com/abpromise> or contact our technical team.

### Terms and conditions

---

- Guarantee only valid for products bought direct from Abcam or one of our authorized distributors