


Product datasheet

# Anti-Neurotensin Receptor 1/NTSR1 antibody ab66216

2 Images

Overview

<b>Product name</b>	Anti-Neurotensin Receptor 1/NTSR1 antibody
<b>Description</b>	Guinea pig polyclonal to Neurotensin Receptor 1/NTSR1
<b>Host species</b>	Guinea pig
<b>Tested applications</b>	<b>Suitable for:</b> WB, IHC-Fr, ICC/IF
<b>Species reactivity</b>	<b>Reacts with:</b> Rat <b>Predicted to work with:</b> Mouse 
<b>Immunogen</b>	Synthetic peptide corresponding to Rat Neurotensin Receptor 1/NTSR1 aa 279-302. Sequence: TVGTHNGLEHSTFNMTIEPGRVQAYC  <a href="#">Run BLAST with</a> <a href="#">Run BLAST with</a>
<b>General notes</b>	This product was previously labelled as Neurotensin Receptor 1

Properties

<b>Form</b>	Liquid
<b>Storage instructions</b>	Shipped at 4°C. Upon delivery aliquot and store at -20°C. Avoid freeze / thaw cycles.
<b>Storage buffer</b>	Constituent: Whole serum
<b>Purity</b>	Whole antiserum
<b>Clonality</b>	Polyclonal
<b>Isotype</b>	IgG

Applications

Our [Abpromise guarantee](#) covers the use of **ab66216** in the following tested applications.

The application notes include recommended starting dilutions; optimal dilutions/concentrations should be determined by the end user.

Application	Abreviews	Notes
WB		1/5000. Detects a band of approximately 47 kDa (predicted molecular weight: 47 kDa).

Application	Abreviews	Notes
IHC-Fr		1/1000.
ICC/IF		1/1000.

**Target**

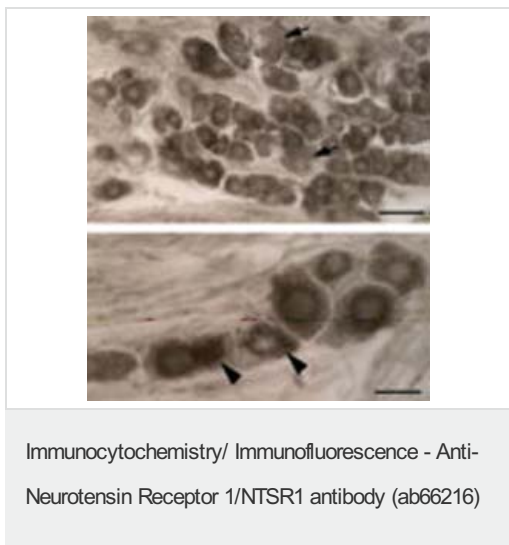
**Relevance**

Neurotensin receptor 1 belongs to the large superfamily of G-protein coupled receptors. NTSR1 mediates the multiple functions of neurotensin, such as hypotension, hyperglycemia, hypothermia, antinociception, and regulation of intestinal motility and secretion. NTR1 has been reported in brain, pancreas, and small intestine. ESTs have been isolated from brain and colon libraries.

**Cellular localization**

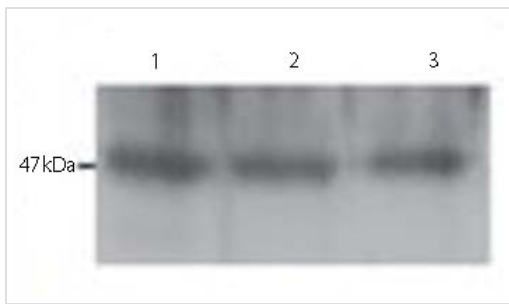
Cell Membrane, Endoplasmic reticulum, Golgi Apparatus and Plasma membrane. Integral membrane protein.

**Images**



Top image: Light microscopic analysis of NTSR1 expression in primary afferent neurons (arrows) using 1:1000 ab66216 of PFA fixed cells.  
 Bottom image: At higher magnification, neurons exhibit a cytoplasmic pattern of immunoreactivity (arrowheads).

Immunocytochemistry/ Immunofluorescence - Anti-Neurotensin Receptor 1/NTSR1 antibody (ab66216)



**All lanes** : Anti-Neurotensin Receptor 1/NTSR1 antibody (ab66216) at 1/5000 dilution

- Lane 1** : DRG's
- Lane 2** : Lumbar spinal chord
- Lane 3** : brain

Western blot - Anti-Neurotensin Receptor 1/NTSR1 antibody (ab66216)

Lysates/proteins at 25 µg per lane.

**Predicted band size:** 47 kDa  
**Observed band size:** 47 kDa

**Please note:** All products are "FOR RESEARCH USE ONLY. NOT FOR USE IN DIAGNOSTIC PROCEDURES"

### **Our Abpromise to you: Quality guaranteed and expert technical support**

---

- Replacement or refund for products not performing as stated on the datasheet
- Valid for 12 months from date of delivery
- Response to your inquiry within 24 hours
  
- We provide support in Chinese, English, French, German, Japanese and Spanish
- Extensive multi-media technical resources to help you
- We investigate all quality concerns to ensure our products perform to the highest standards

If the product does not perform as described on this datasheet, we will offer a refund or replacement. For full details of the Abpromise, please visit <https://www.abcam.com/abpromise> or contact our technical team.

### **Terms and conditions**

---

- Guarantee only valid for products bought direct from Abcam or one of our authorized distributors