

Product datasheet

Anti-Neutrophil antibody [7/4] (Phycoerythrin)  
ab105157

5 References 1 Image

Overview

<b>Product name</b>	Anti-Neutrophil antibody [7/4] (Phycoerythrin)
<b>Description</b>	Rat monoclonal [7/4] to Neutrophil (Phycoerythrin)
<b>Host species</b>	Rat
<b>Conjugation</b>	Phycoerythrin. Ex: 488nm, Em: 575nm
<b>Specificity</b>	Rat anti mouse Ly-6B.2, clone 7/4 recognizes the Ly-6B.2 antigen in 129J; AKR; C57BL/6; C57BL/10; C58; DBA/2; NZB; NZW; SJL; MFI; Swiss (PO) strains. A2G; A/Sn; ASW; BALB/c; C3H/HEH: CBA.T6T6 are negative or demonstrate very weak reactivity.
<b>Tested applications</b>	<b>Suitable for:</b> Flow Cyt, IHC-Fr
<b>Species reactivity</b>	<b>Reacts with:</b> Mouse
<b>Immunogen</b>	Cultured Mouse bone marrow cells.
<b>Epitope</b>	Recognizes the Ly-6B.2 antigen.
<b>General notes</b>	<p>ab105157 recognizes the Ly-6B.2 antigen. Ly-6B.2 is a ~25-30 kDa GPI-anchored, heavily glycosylated protein expressed on neutrophils, inflammatory monocytes and some activated macrophages. High levels of expression are seen in bone marrow, spleen, lung and lymph nodes. N-glycanase treatment of thioglycollate elicited peritoneal neutrophil lysates lowers the apparent molecular weight of Ly-6B.2 to ~15 kDa.</p> <p>ab105157 has been successfully used for the immunomagnetic depletion of neutrophils during the enrichment of primitive hematopoietic cells from bone marrow and the depletion of myeloid cells <i>in vivo</i>.</p>

Properties

<b>Form</b>	Liquid
<b>Storage instructions</b>	Shipped at 4°C. Store at +4°C.
<b>Storage buffer</b>	Preservative: 0.09% Sodium azide Constituents: PBS, 1% BSA
<b>Purity</b>	Protein G purified
<b>Purification notes</b>	Purified IgG prepared by affinity chromatography on Protein G from tissue culture supernatant.

<b>Clonality</b>	Monoclonal
<b>Clone number</b>	7/4
<b>Myeloma</b>	Y3/Ag1.2.3
<b>Isotype</b>	IgG2a

## Applications

Our [Abpromise guarantee](#) covers the use of **ab105157** in the following tested applications.

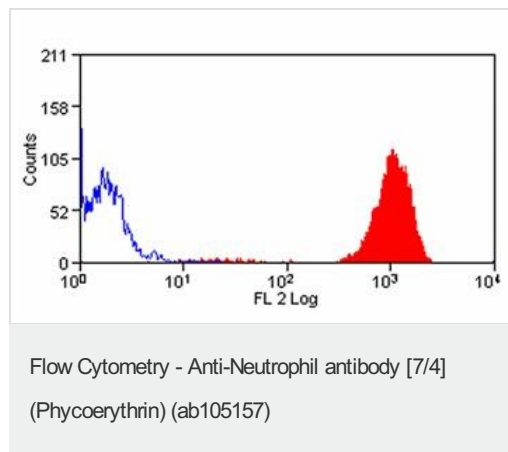
The application notes include recommended starting dilutions; optimal dilutions/concentrations should be determined by the end user.

Application	Abreviews	Notes
Flow Cyt		Use 10µl for 10 <sup>6</sup> cells. <a href="#">ab134674</a> - Rat monoclonal IgG2a, is suitable for use as an isotype control with this antibody.
IHC-Fr		Use at an assay dependent concentration.

## Target

**Cellular localization** Cell membrane; Lipid-anchor, GPI-anchor

## Images



Mouse (strain C57BL6) peripheral granulocytes stained with ab105157.

**Please note:** All products are "FOR RESEARCH USE ONLY AND ARE NOT INTENDED FOR DIAGNOSTIC OR THERAPEUTIC USE"

## Our Abpromise to you: Quality guaranteed and expert technical support

- Replacement or refund for products not performing as stated on the datasheet
- Valid for 12 months from date of delivery
- Response to your inquiry within 24 hours

- We provide support in Chinese, English, French, German, Japanese and Spanish
- Extensive multi-media technical resources to help you
- We investigate all quality concerns to ensure our products perform to the highest standards

If the product does not perform as described on this datasheet, we will offer a refund or replacement. For full details of the Abpromise, please visit <https://www.abcam.com/abpromise> or contact our technical team.

### **Terms and conditions**

---

- Guarantee only valid for products bought direct from Abcam or one of our authorized distributors