

## Product datasheet

# Anti-NFIB / NF1B2 antibody [EPR14122] ab186738

Recombinant **RabMAb**

8 Images

### Overview

<b>Product name</b>	Anti-NFIB / NF1B2 antibody [EPR14122]
<b>Description</b>	Rabbit monoclonal [EPR14122] to NFIB / NF1B2
<b>Host species</b>	Rabbit
<b>Tested applications</b>	<b>Suitable for:</b> Flow Cyt, WB, IHC-P, ICC/IF, IP
<b>Species reactivity</b>	<b>Reacts with:</b> Mouse, Rat, Human
<b>Immunogen</b>	Synthetic peptide (the amino acid sequence is considered to be commercially sensitive) within Human NFIB/ NF1B2 aa 350 to the C-terminus. The exact sequence is proprietary. Database link: <a href="#">O00712</a>
<b>Positive control</b>	HeLa, rat C6, rat PC12 and mouse NIH 3T3 cell lysates; Human fetal brain lysate; Human breast and Mouse liver tissue; HeLa cells.

### General notes

Our RabMAb<sup>®</sup> technology is a patented hybridoma-based technology for making rabbit monoclonal antibodies. For details on our patents, please refer to [RabMab<sup>®</sup> patents](#).

**We are constantly working hard to ensure we provide our customers with best in class antibodies. As a result of this work we are pleased to now offer this antibody in purified format. We are in the process of updating our datasheets. The purified format is designated 'PUR' on our product labels. If you have any questions regarding this update, please contact our Scientific Support team.**

This product is a [recombinant rabbit monoclonal antibody](#).

### Properties

<b>Form</b>	Liquid
<b>Storage instructions</b>	Shipped at 4°C. Store at +4°C short term (1-2 weeks). Upon delivery aliquot. Store at -20°C long term. Avoid freeze / thaw cycle.
<b>Storage buffer</b>	Preservative: 0.01% Sodium azide Constituents: 59% PBS, 40% Glycerol, 0.05% BSA
<b>Purity</b>	Protein A purified

<b>Clonality</b>	Monoclonal
<b>Clone number</b>	EPR14122
<b>Isotype</b>	IgG

## Applications

Our [Abpromise guarantee](#) covers the use of **ab186738** in the following tested applications.

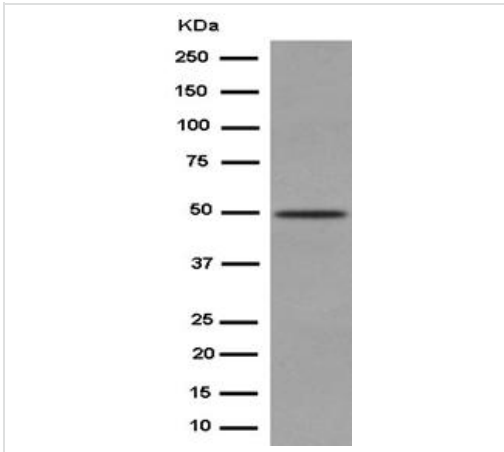
The application notes include recommended starting dilutions; optimal dilutions/concentrations should be determined by the end user.

Application	Abreviews	Notes
Flow Cyt		Use at an assay dependent concentration.
WB		1/1000 - 1/10000. Detects a band of approximately 47,53,55 kDa (predicted molecular weight: 47 kDa).
IHC-P		1/250 - 1/500. Perform heat mediated antigen retrieval with citrate buffer pH 6 before commencing with IHC staining protocol.
ICC/IF		1/100.
IP		1/30 - 1/50.

## Target

<b>Function</b>	Recognizes and binds the palindromic sequence 5'-TTGGCNNNNNGCCAA-3' present in viral and cellular promoters and in the origin of replication of adenovirus type 2. These proteins are individually capable of activating transcription and replication.
<b>Sequence similarities</b>	Belongs to the CTF/NF-I family. Contains 1 CTF/NF-I DNA-binding domain.
<b>Cellular localization</b>	Nucleus.

## Images



Western blot - Anti-NFIB / NF1B2 antibody [EPR14122] (ab186738)

Anti-NFIB / NF1B2 antibody [EPR14122] (ab186738) at 1/5000 dilution + Human fetal brain at 20  $\mu$ g

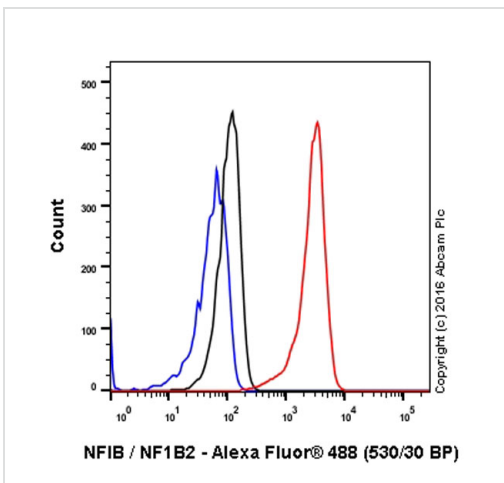
**Secondary**

Goat Anti-Rabbit IgG H&L (HRP) (ab136636) at 1/1000 dilution

Developed using the ECL technique.

**Predicted band size:** 47 kDa

**Observed band size:** 47 kDa

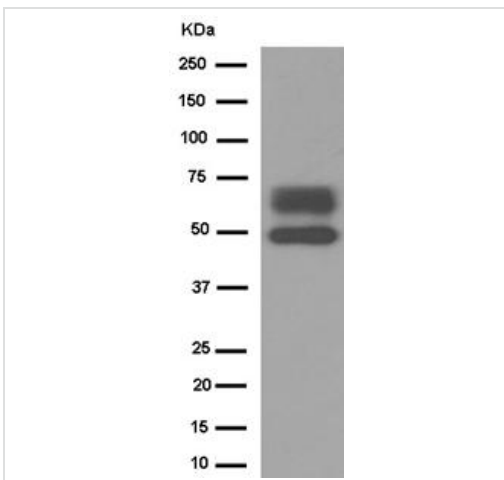


Flow Cytometry - Anti-NFIB / NF1B2 antibody [EPR14122] (ab186738)

ab186738 staining NFIB / NF1B2 in the human cell line HeLa (human cervix adenocarcinoma) by flow cytometry. Cells were fixed with 4% paraformaldehyde, permeabilised with 90% methanol and the sample was incubated with the primary antibody at a dilution of 1/70. A goat anti rabbit IgG (Alexa Fluor® 488) at a dilution of 1/2000 was used as the secondary antibody.

Isotype control: Rabbit monoclonal IgG (Black)

Unlabelled control: Cell without incubation with primary antibody and secondary antibody (Blue)



Western blot - Anti-NFIB / NF1B2 antibody [EPR14122] (ab186738)

Anti-NFIB / NF1B2 antibody [EPR14122] (ab186738) at 1/5000 dilution + HeLa cell lysate at 10  $\mu$ g

**Secondary**

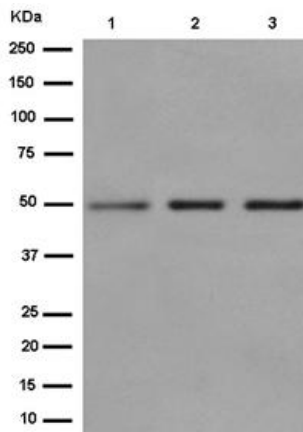
goat anti-rabbit IgG, (H+L), peroxidase conjugated at 1/1000 dilution

Developed using the ECL technique.

**Predicted band size:** 47 kDa

**Observed band size:** 47, 53, 55 kDa

[why is the actual band size different from the predicted?](#)



Western blot - Anti-NFIB / NF1B2 antibody [EPR14122] (ab186738)

**All lanes :** Anti-NFIB / NF1B2 antibody [EPR14122] (ab186738) at 1/1000 dilution

**Lane 1 :** rat C6 cell lysate

**Lane 2 :** rat PC12 cell lysate

**Lane 3 :** mouse NIH 3T3 cell lysate

Lysates/proteins at 10 µg per lane.

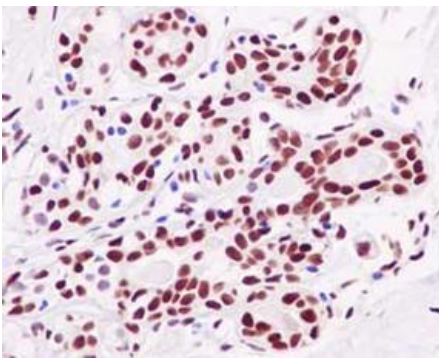
### Secondary

**All lanes :** goat anti-rabbit IgG, (H+L), peroxidase conjugated at 1/1000 dilution

Developed using the ECL technique.

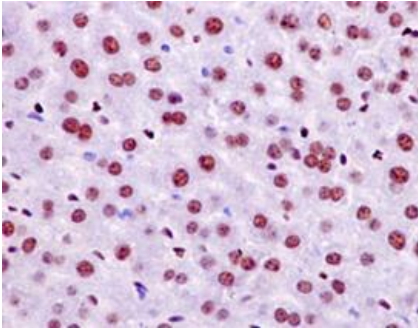
**Predicted band size:** 47 kDa

**Observed band size:** 47 kDa



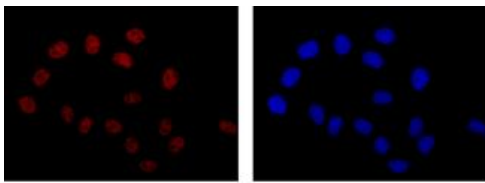
Immunohistochemistry (Formalin/PFA-fixed paraffin-embedded sections) - Anti-NFIB / NF1B2 antibody [EPR14122] (ab186738)

Immunohistochemical analysis of paraffin-embedded, Human breast tissue labeling NFIB / NF1B2 with ab186738 at a 1/500 dilution. Counter stained with hematoxylin.



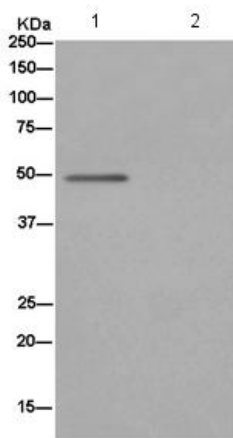
Immunohistochemical analysis of paraffin-embedded, mouse liver tissue labeling NFIB / NF1B2 with ab186738 at a 1/500 dilution. Counter stained with hematoxylin.

Immunohistochemistry (Formalin/PFA-fixed paraffin-embedded sections) - Anti-NFIB / NF1B2 antibody [EPR14122] (ab186738)



Immunofluorescence analysis of, paraformaldehyde-fixed, HeLa cells labeling NFIB / NF1B2 with ab186738 at a 1/100 dilution. As secondary antibody goat anti-rabbit IgG (Alexa Fluor®555) was used at a 1/200. In blue DAPI staining.

Immunocytochemistry/ Immunofluorescence - Anti-NFIB / NF1B2 antibody [EPR14122] (ab186738)



Western blot analysis on immunoprecipitation from 1) Human fetal brain lysate and 2) PBS, labeling NFIB / NF1B2 using ab186738 at 1/50 dilution and HRP-conjugated anti-rabbit IgG preferentially detecting the non-reduced form of rabbit IgG at a 1/1500 dilution.

Immunoprecipitation - Anti-NFIB / NF1B2 antibody [EPR14122] (ab186738)

**Please note:** All products are "FOR RESEARCH USE ONLY. NOT FOR USE IN DIAGNOSTIC PROCEDURES"

### Our Abpromise to you: Quality guaranteed and expert technical support

- Replacement or refund for products not performing as stated on the datasheet
- Valid for 12 months from date of delivery
- Response to your inquiry within 24 hours

- We provide support in Chinese, English, French, German, Japanese and Spanish
- Extensive multi-media technical resources to help you
- We investigate all quality concerns to ensure our products perform to the highest standards

If the product does not perform as described on this datasheet, we will offer a refund or replacement. For full details of the Abpromise, please visit <https://www.abcam.com/abpromise> or contact our technical team.

### **Terms and conditions**

---

- Guarantee only valid for products bought direct from Abcam or one of our authorized distributors