


## Product datasheet

# Anti-NFkB Inducing Kinase NIK antibody ab228587

2 Images

### Overview

---

<b>Product name</b>	Anti-NFkB Inducing Kinase NIK antibody
<b>Description</b>	Rabbit polyclonal to NFkB Inducing Kinase NIK
<b>Host species</b>	Rabbit
<b>Tested applications</b>	<b>Suitable for:</b> ICC/IF, IHC-P
<b>Species reactivity</b>	<b>Reacts with:</b> Mouse, Human <b>Predicted to work with:</b> Rat, Cow, Rhesus monkey 
<b>Immunogen</b>	Recombinant fragment within Human NFkB Inducing Kinase NIK (internal sequence). The exact sequence is proprietary. Database link: <a href="#">Q99558</a>
<b>Positive control</b>	IHC-P: Mouse prostate tissue. ICC/IF: K562 cells.
<b>General notes</b>	<p>Reproducibility is key to advancing scientific discovery and accelerating scientists' next breakthrough.</p> <p>Abcam is leading the way with our range of recombinant antibodies, knockout-validated antibodies and knockout cell lines, all of which support improved reproducibility.</p> <p>We are also planning to innovate the way in which we present recommended applications and species on our product datasheets, so that only applications &amp; species that have been tested in our own labs, our suppliers or by selected trusted collaborators are covered by our Abpromise™ guarantee.</p> <p>In preparation for this, we have started to update the applications &amp; species that this product is Abpromise guaranteed for.</p> <p>We are also updating the applications &amp; species that this product has been “predicted to work with,” however this information is not covered by our Abpromise guarantee.</p> <p>Applications &amp; species from publications and Abreviews that have not been tested in our own labs or in those of our suppliers are not covered by the Abpromise guarantee.</p> <p>Please check that this product meets your needs before purchasing. If you have any questions, special requirements or concerns, please send us an inquiry and/or contact our Support team ahead of purchase. Recommended alternatives for this product can be found below, as well as customer reviews and Q&amp;As.</p>

### Properties

---

<b>Form</b>	Liquid
<b>Storage instructions</b>	Shipped at 4°C. Store at +4°C short term (1-2 weeks). Upon delivery aliquot. Store at -20°C long term. Avoid freeze / thaw cycle.
<b>Storage buffer</b>	pH: 7.00 Preservative: 0.01% Thimerosal (merthiolate) Constituents: 79.99% PBS, 20% Glycerol (glycerin, glycerine)
<b>Purity</b>	Immunogen affinity purified
<b>Clonality</b>	Polyclonal
<b>Isotype</b>	IgG

## Applications

Our [Abpromise guarantee](#) covers the use of **ab228587** in the following tested applications.

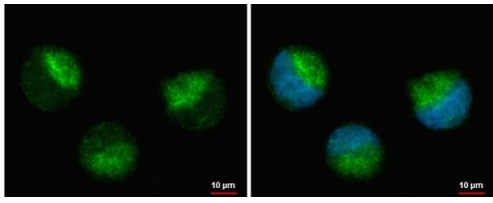
The application notes include recommended starting dilutions; optimal dilutions/concentrations should be determined by the end user.

Application	Abreviews	Notes
ICC/IF		1/100 - 1/1000.
IHC-P		1/100 - 1/1000.

## Target

<b>Function</b>	Lymphotoxin beta-activated kinase which seems to be exclusively involved in the activation of NF-kappa-B and its transcriptional activity. Promotes proteolytic processing of NFKB2/P100, which leads to activation of NF-kappa-B via the non-canonical pathway. Could act in a receptor-selective manner.
<b>Tissue specificity</b>	Weakly expressed in testis, small intestine, spleen, thymus, peripheral blood leukocytes, prostate, ovary and colon.
<b>Sequence similarities</b>	Belongs to the protein kinase superfamily. STE Ser/Thr protein kinase family. MAP kinase kinase kinase subfamily. Contains 1 protein kinase domain.
<b>Post-translational modifications</b>	Autophosphorylated. Phosphorylation at Thr-559 is required to activate its kinase activity and 'Lys-63'-linked polyubiquitination. Phosphorylated by CHUK/IKKK leading to MAP3K14 destabilization. Ubiquitinated. Undergoes both 'Lys-48'- and 'Lys-63'-linked polyubiquitination. 'Lys-48'-linked polyubiquitination leads to its degradation by the proteasome, while 'Lys-63'-linked polyubiquitination stabilizes and activates it.
<b>Cellular localization</b>	Cytoplasm.

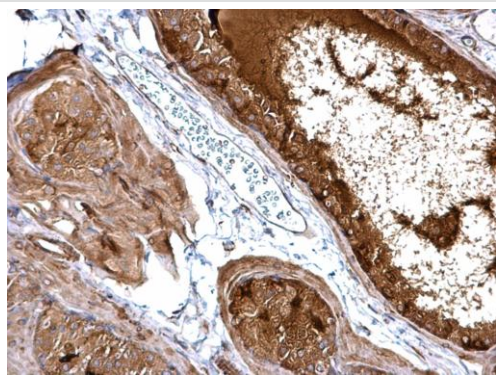
## Images



Immunocytochemistry/ Immunofluorescence - Anti-NFκB Inducing Kinase NIK antibody (ab228587)

K562 (human chronic myelogenous leukemia cell line from bone marrow ) cells stained for NFκB Inducing Kinase NIK (green) using ab228587 at 1/500 dilution in ICC/IF. Cells were fixed in ice-cold methanol for 5 minutes.

Blue: Hoechst 33342 staining.



Immunohistochemistry (Formalin/PFA-fixed paraffin-embedded sections) - Anti-NFκB Inducing Kinase NIK antibody (ab228587)

Paraffin-embedded mouse prostate tissue stained for NFκB Inducing Kinase NIK with ab228587 at 1/500 dilution in immunohistochemical analysis.

**Please note:** All products are "FOR RESEARCH USE ONLY. NOT FOR USE IN DIAGNOSTIC PROCEDURES"

### Our Abpromise to you: Quality guaranteed and expert technical support

---

- Replacement or refund for products not performing as stated on the datasheet
- Valid for 12 months from date of delivery
- Response to your inquiry within 24 hours
  
- We provide support in Chinese, English, French, German, Japanese and Spanish
- Extensive multi-media technical resources to help you
- We investigate all quality concerns to ensure our products perform to the highest standards

If the product does not perform as described on this datasheet, we will offer a refund or replacement. For full details of the Abpromise, please visit <https://www.abcam.com/abpromise> or contact our technical team.

### Terms and conditions

---

- Guarantee only valid for products bought direct from Abcam or one of our authorized distributors