

Product datasheet

Anti-NFS1 antibody [2635E1α] ab58623

1 References 1 Image

Overview

Product name	Anti-NFS1 antibody [2635E1α]
Description	Mouse monoclonal [2635E1α] to NFS1
Host species	Mouse
Tested applications	Suitable for: WB
Species reactivity	Reacts with: Recombinant fragment
Immunogen	Recombinant fragment of Human NFS1
General notes	<p>The Life Science industry has been in the grips of a reproducibility crisis for a number of years. Abcam is leading the way in addressing this with our range of recombinant monoclonal antibodies and knockout edited cell lines for gold-standard validation. Please check that this product meets your needs before purchasing.</p> <p>If you have any questions, special requirements or concerns, please send us an inquiry and/or contact our Support team ahead of purchase. Recommended alternatives for this product can be found below, along with publications, customer reviews and Q&As</p>

Properties

Form	Liquid
Storage instructions	Shipped at 4°C. Store at +4°C short term (1-2 weeks). Upon delivery aliquot. Store at -20°C long term.
Storage buffer	<p>pH: 7.40</p> <p>Preservative: 0.05% Sodium azide</p> <p>Constituents: PBS, 0.0225% Potassium chloride, 0.03% Potassium phosphate, 0.1312% Sodium phosphate, 0.812% Sodium chloride, 1% BSA</p>
Purity	Protein G purified
Purification notes	Purified using protein G column chromatography from culture supernatant of hybridoma cultured in a medium containing bovine IgG-depleted (approximately 95%) fetal bovine serum and filtered through a 0.22µm membrane.
Clonality	Monoclonal
Clone number	2635E1a
Isotype	IgG1

Applications

The Abpromise guarantee Our [Abpromise guarantee](#) covers the use of ab58623 in the following tested applications.

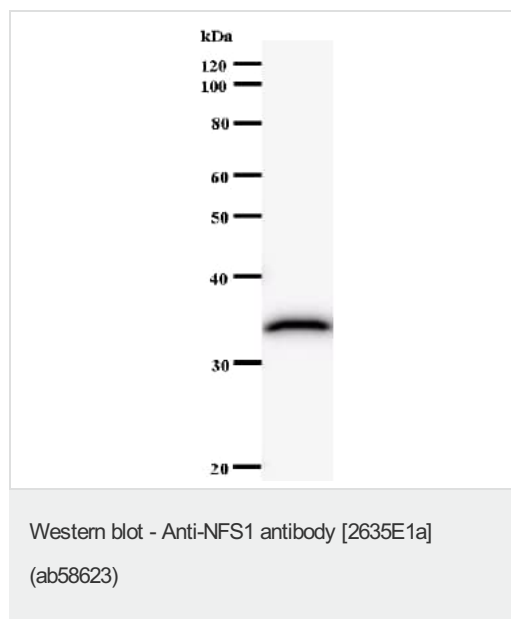
The application notes include recommended starting dilutions; optimal dilutions/concentrations should be determined by the end user.

Application	Abreviews	Notes
WB		Use at an assay dependent concentration. Predicted molecular weight: 50 kDa.

Target

Function	Catalyzes the removal of elemental sulfur from cysteine to produce alanine. It supplies the inorganic sulfur for iron-sulfur (Fe-S) clusters. May be involved in the biosynthesis of molybdenum cofactor.
Tissue specificity	Predominantly expressed in heart and skeletal muscle. Also found in brain, liver and pancreas.
Sequence similarities	Belongs to the class-V pyridoxal-phosphate-dependent aminotransferase family. NifS/lscS subfamily.
Cellular localization	Cytoplasm. Nucleus and Mitochondrion.

Images



Anti-NFS1 antibody [2635E1a] (ab58623) + immunogen (recombinant fragment)

Predicted band size: 50 kDa

The low MW of the band is due to the fact that the immunising recombinant fragment, rather than the full length protein, was used as positive control.

Please note: All products are "FOR RESEARCH USE ONLY. NOT FOR USE IN DIAGNOSTIC PROCEDURES"

Our Abpromise to you: Quality guaranteed and expert technical support

- Replacement or refund for products not performing as stated on the datasheet
- Valid for 12 months from date of delivery

- Response to your inquiry within 24 hours
- We provide support in Chinese, English, French, German, Japanese and Spanish
- Extensive multi-media technical resources to help you
- We investigate all quality concerns to ensure our products perform to the highest standards

If the product does not perform as described on this datasheet, we will offer a refund or replacement. For full details of the Abpromise, please visit <https://www.abcam.com/abpromise> or contact our technical team.

Terms and conditions

- Guarantee only valid for products bought direct from Abcam or one of our authorized distributors