


Product datasheet

Anti-NHE-6 antibody ab137185

1 References 1 Image

Overview

| | |
|----------------------------|-----------------------------------------------------------------------------------------------------------------------------------------------------|
| Product name | Anti-NHE-6 antibody |
| Description | Rabbit polyclonal to NHE-6 |
| Host species | Rabbit |
| Tested applications | Suitable for: WB |
| Species reactivity | Reacts with: Human Predicted to work with: Mouse  |
| Immunogen | Synthetic peptide corresponding to Human NHE-6 aa 543-592 (internal sequence). |
| Positive control | COLO205 cell lysate |
| General notes | Previously labelled as SLC9A6. |

Properties

| | |
|-----------------------------|----------------------------------------------------------------------------------------------------------------------------------------------------------------------------|
| Form | Liquid |
| Storage instructions | Shipped at 4°C. Upon delivery aliquot and store at -20°C. Avoid freeze / thaw cycles. |
| Storage buffer | pH: 7.40 Preservative: 0.02% Sodium azide Constituents: 49% PBS, 50% Glycerol, 0.88% Sodium chloride Note: PBS is without Mg ²⁺ and Ca ²⁺ . |
| Purity | Immunogen affinity purified |
| Clonality | Polyclonal |
| Isotype | IgG |

Applications

Our [Abpromise guarantee](#) covers the use of **ab137185** in the following tested applications.

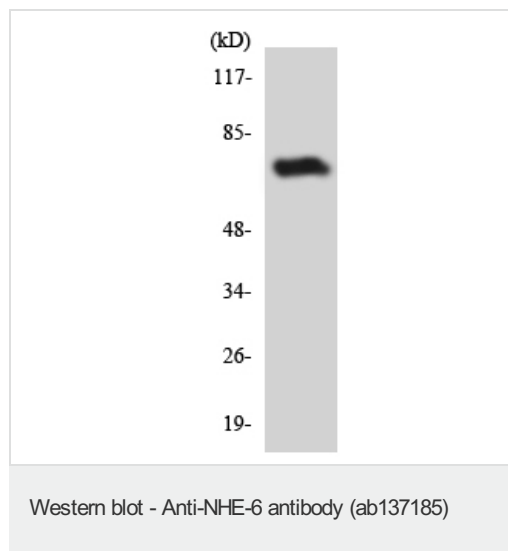
The application notes include recommended starting dilutions; optimal dilutions/concentrations should be determined by the end user.

| Application | Abreviews | Notes |
|-------------|-----------|-----------------------------------------------------|
| WB | | 1/500 - 1/1000. Predicted molecular weight: 74 kDa. |

Target

| | |
|-------------------------------|-----------------------------------------------------------------------------------------------------------------------------------------------------------------------------------------------------------------------------------------------------------------------------------------------------------------------------------------------|
| Function | Electroneutral exchange of protons for Na(+) and K(+) across the early and recycling endosome membranes. Contributes to calcium homeostasis. |
| Tissue specificity | Ubiquitous; but is most abundant in mitochondrion-rich tissues such as brain, skeletal muscle and heart. |
| Involvement in disease | Defects in SLC9A6 are the cause of mental retardation syndromic X-linked Christianson type (MRXSC) [MIM:300243]; also known as MRXS-Christianson or X-linked Angelman-like syndrome. The phenotype is characterized by profound mental retardation, epilepsy, ataxia, and microcephaly, and showed phenotypic overlap with Angelman syndrome. |
| Sequence similarities | Belongs to the monovalent cation:proton antiporter 1 (CPA1) transporter (TC 2.A.36) family. |
| Cellular localization | Endosome membrane. Is present in the recycling compartments including early and recycling endosomes, and only appears transiently on the plasma membrane. |

Images



Anti-NHE-6 antibody (ab137185) at 1/500 dilution + COLO205 cell lysate at 30 µg

Predicted band size: 74 kDa

Please note: All products are "FOR RESEARCH USE ONLY. NOT FOR USE IN DIAGNOSTIC PROCEDURES"

Our Abpromise to you: Quality guaranteed and expert technical support

- Replacement or refund for products not performing as stated on the datasheet
- Valid for 12 months from date of delivery
- Response to your inquiry within 24 hours
- We provide support in Chinese, English, French, German, Japanese and Spanish
- Extensive multi-media technical resources to help you
- We investigate all quality concerns to ensure our products perform to the highest standards

If the product does not perform as described on this datasheet, we will offer a refund or replacement. For full details of the Abpromise, please visit <https://www.abcam.com/abpromise> or contact our technical team.

Terms and conditions

- Guarantee only valid for products bought direct from Abcam or one of our authorized distributors