

Product datasheet

Anti-NHLRC1/Malin antibody ab215356

1 Image

Overview

---

<b>Product name</b>	Anti-NHLRC1/Malin antibody
<b>Description</b>	Rabbit polyclonal to NHLRC1/Malin
<b>Host species</b>	Rabbit
<b>Tested applications</b>	<b>Suitable for:</b> WB
<b>Species reactivity</b>	<b>Reacts with:</b> Human
<b>Immunogen</b>	Fusion protein within Human NHLRC1/Malin. The exact sequence is proprietary. The identity of the protein fusion partner is GST. Database link: <a href="#">Q6VVB1</a>
<b>Positive control</b>	WB - Lo2 cell line lysate
<b>General notes</b>	This product was previously labelled as NHLRC1

Reproducibility is key to advancing scientific discovery and accelerating scientists' next breakthrough.

Abcam is leading the way with our range of recombinant antibodies, knockout-validated antibodies and knockout cell lines, all of which support improved reproducibility.

We are also planning to innovate the way in which we present recommended applications and species on our product datasheets, so that only applications & species that have been tested in our own labs, our suppliers or by selected trusted collaborators are covered by our Abpromise™ guarantee.

In preparation for this, we have started to update the applications & species that this product is Abpromise guaranteed for.

We are also updating the applications & species that this product has been “predicted to work with,” however this information is not covered by our Abpromise guarantee.

Applications & species from publications and Abreviews that have not been tested in our own labs or in those of our suppliers are not covered by the Abpromise guarantee.

Please check that this product meets your needs before purchasing. If you have any questions, special requirements or concerns, please send us an inquiry and/or contact our Support team ahead of purchase. Recommended alternatives for this product can be found below, as well as customer reviews and Q&As.

Properties

## Properties

---

<b>Form</b>	Liquid
<b>Storage instructions</b>	Shipped at 4°C. Store at +4°C short term (1-2 weeks). Upon delivery aliquot. Store at -20°C long term. Avoid freeze / thaw cycle.
<b>Storage buffer</b>	pH: 7.40 Preservative: 0.05% Sodium azide Constituents: 59% PBS, 40% Glycerol (glycerin, glycerine)
<b>Purity</b>	Immunogen affinity purified
<b>Clonality</b>	Polyclonal
<b>Isotype</b>	IgG

## Applications

---

Our [Abpromise guarantee](#) covers the use of **ab215356** in the following tested applications.

The application notes include recommended starting dilutions; optimal dilutions/concentrations should be determined by the end user.

Application	Abreviews	Notes
WB		1/200 - 1/1000. Predicted molecular weight: 42 kDa.

---

## Target

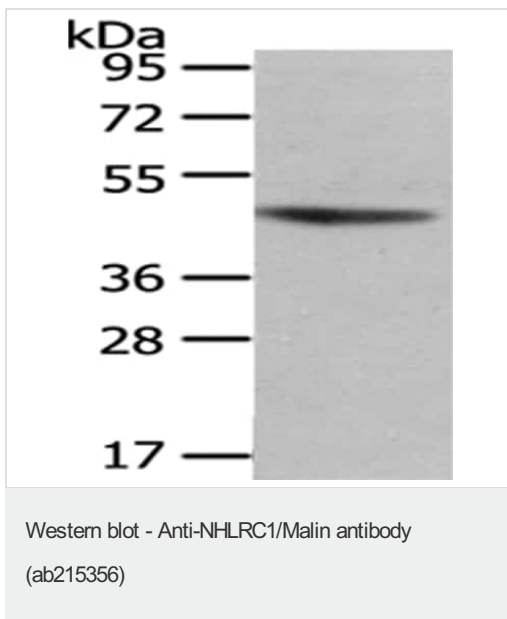
---

<b>Function</b>	E3 ubiquitin-protein ligase. Together with the phosphatase EPM2A/laforin, appears to be involved in the clearance of toxic polyglucosan and protein aggregates via multiple pathways. In complex with EPM2A/laforin and HSP70, suppresses the cellular toxicity of misfolded proteins by promoting their degradation through the ubiquitin-proteasome system (UPS). Ubiquitinates the glycogen-targeting protein phosphatase subunits PPP1R3C/PTG and PPP1R3D in a laforin-dependent manner and targets them for proteasome-dependent degradation, thus decreasing glycogen accumulation. Polyubiquitinates EPM2A/laforin and ubiquitinates AGL and targets them for proteasome-dependent degradation. Also promotes proteasome-independent protein degradation through the macroautophagy pathway.
<b>Tissue specificity</b>	Expressed in brain, cerebellum, spinal cord, medulla, heart, liver, skeletal muscle and pancreas.
<b>Pathway</b>	Protein modification; protein ubiquitination.
<b>Involvement in disease</b>	Epilepsy, progressive myoclonic 2
<b>Sequence similarities</b>	Contains 6 NHL repeats. Contains 1 RING-type zinc finger.
<b>Domain</b>	The RING domain is essential for ubiquitin E3 ligase activity.
<b>Cellular localization</b>	Endoplasmic reticulum. Nucleus. Localizes at the endoplasmic reticulum and, to a lesser extent, in the nucleus.

---

## Images

---



Anti-NHLRC1/Malin antibody (ab215356) at 1/400 dilution + Lo2 cell line lysate at 40 µg

**Secondary**

Goat anti rabbit IgG at 1/8000 dilution

Developed using the ECL technique.

**Predicted band size:** 42 kDa

**Exposure time:** 3 seconds

Gel: 8%SDS-PAGE

**Please note:** All products are "FOR RESEARCH USE ONLY. NOT FOR USE IN DIAGNOSTIC PROCEDURES"

**Our Abpromise to you: Quality guaranteed and expert technical support**

---

- Replacement or refund for products not performing as stated on the datasheet
- Valid for 12 months from date of delivery
- Response to your inquiry within 24 hours
  
- We provide support in Chinese, English, French, German, Japanese and Spanish
- Extensive multi-media technical resources to help you
- We investigate all quality concerns to ensure our products perform to the highest standards

If the product does not perform as described on this datasheet, we will offer a refund or replacement. For full details of the Abpromise, please visit <https://www.abcam.com/abpromise> or contact our technical team.

**Terms and conditions**

---

- Guarantee only valid for products bought direct from Abcam or one of our authorized distributors