

Product datasheet

Anti-NHLRC2 antibody ab235426

3 Images

Overview

| | |
|----------------------------|---|
| Product name | Anti-NHLRC2 antibody |
| Description | Rabbit polyclonal to NHLRC2 |
| Host species | Rabbit |
| Tested applications | Suitable for: WB, IHC-P |
| Species reactivity | Reacts with: Human |
| Immunogen | Recombinant full length protein corresponding to Human NHLRC2 aa 1-367. |

Sequence:

```
MAGTHQIWALLLLDSGKLPKKNELTKGTCLRFAGSGNE
ENRNNAYPHKAGF
AQPSGLSLASEDPWSCLFVADESSTVRTVSLKDGA
VKHLVGGERDPMNL
FAFGDVDGVGINAKLQHPLGVTWDKRNLLYVADSYN
HKIKVVDPKTKNC
TTLAGTGDTNNVTSSSFTESTFNEPGGLCIGENGELLY
VADTNNHQIKVM
DLETKMVSVLPFRSENAVVDGPFLVEKQKTLPKLPKS
APSIRLSPVTAC
AGQTLQFKLRDLPSGSKLTEGVSSCWFLTAEGNEW
LLQGQIAAGDIENI
SSQPTISLQIPDDCLSLEAIVSVSVFLYCSADSSACM
MKAILFSQPLQI TDTQQGCIAPVELRYVF
```

Database link: [Q8NBF2-2](#)

 [Run BLAST with](#)

 [Run BLAST with](#)

| | |
|-------------------------|--|
| Positive control | WB: U-251 MG whole cell lysate. IHC-P: Human small intestine and placenta tissues. |
|-------------------------|--|

Properties

| | |
|-----------------------------|---|
| Form | Liquid |
| Storage instructions | Shipped at 4°C. Store at +4°C short term (1-2 weeks). Upon delivery aliquot. Store at -20°C long term. Avoid freeze / thaw cycle. |
| Storage buffer | pH: 7.40 Preservative: 0.03% Proclin |

| | |
|---------------------------|---------------------------------|
| | Constituents: 50% Glycerol, PBS |
| Purity | Protein G purified |
| Purification notes | Purity >95%. |
| Clonality | Polyclonal |
| Isotype | IgG |

Applications

Our [Abpromise guarantee](#) covers the use of **ab235426** in the following tested applications.

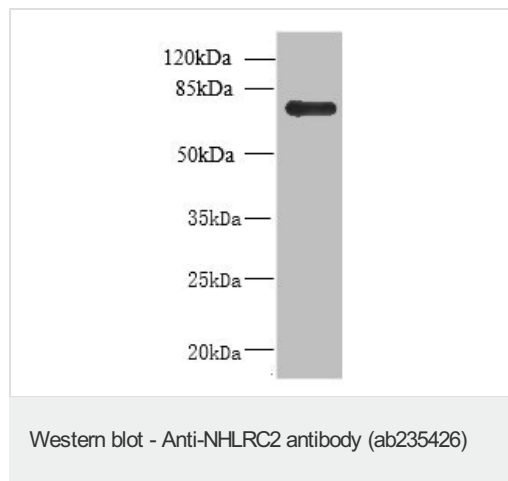
The application notes include recommended starting dilutions; optimal dilutions/concentrations should be determined by the end user.

| Application | Abreviews | Notes |
|-------------|-----------|---|
| WB | | 1/500 - 1/2000. Predicted molecular weight: 40, 79 kDa. |
| IHC-P | | 1/20 - 1/200. |

Target

| | |
|------------------------------|---|
| Sequence similarities | Contains 6 NHL repeats. Contains 1 thioredoxin domain. |
|------------------------------|---|

Images

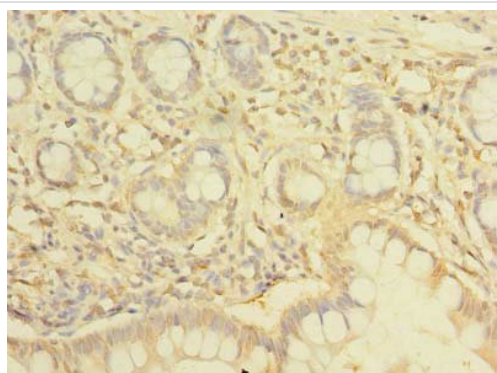


Anti-NHLRC2 antibody (ab235426) at 1/500 dilution + U-251 MG
(Human brain glioma cell line) whole cell lysate

Secondary

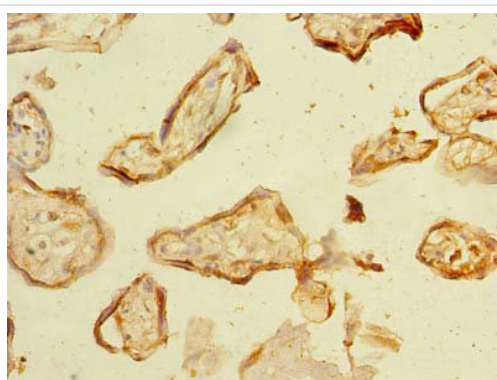
Goat polyclonal to rabbit IgG at 1/10000 dilution

Predicted band size: 40, 79 kDa



Paraffin-embedded human small intestine tissue stained for NHLRC2 with ab235426 at 1/100 dilution in immunohistochemical analysis.

Immunohistochemistry (Formalin/PFA-fixed paraffin-embedded sections) - Anti-NHLRC2 antibody (ab235426)



Paraffin-embedded human placenta tissue stained for NHLRC2 with ab235426 at 1/100 dilution in immunohistochemical analysis.

Immunohistochemistry (Formalin/PFA-fixed paraffin-embedded sections) - Anti-NHLRC2 antibody (ab235426)

Please note: All products are "FOR RESEARCH USE ONLY. NOT FOR USE IN DIAGNOSTIC PROCEDURES"

Our Abpromise to you: Quality guaranteed and expert technical support

- Replacement or refund for products not performing as stated on the datasheet
- Valid for 12 months from date of delivery
- Response to your inquiry within 24 hours
- We provide support in Chinese, English, French, German, Japanese and Spanish

- Extensive multi-media technical resources to help you
- We investigate all quality concerns to ensure our products perform to the highest standards

If the product does not perform as described on this datasheet, we will offer a refund or replacement. For full details of the Abpromise, please visit <https://www.abcam.com/abpromise> or contact our technical team.

Terms and conditions

- Guarantee only valid for products bought direct from Abcam or one of our authorized distributors