

## Product datasheet

# Anti-Nicotinic Acetylcholine Receptor beta 2/CHRNA2 antibody ab189174

1 References 2 Images

### Overview

<b>Product name</b>	Anti-Nicotinic Acetylcholine Receptor beta 2/CHRNA2 antibody
<b>Description</b>	Goat polyclonal to Nicotinic Acetylcholine Receptor beta 2/CHRNA2
<b>Host species</b>	Goat
<b>Tested applications</b>	<b>Suitable for:</b> WB, IHC-P
<b>Species reactivity</b>	<b>Reacts with:</b> Human <b>Predicted to work with:</b> Mouse, Rat, Hamster, Cow, Dog, Pig, Monkey, Gorilla
<b>Immunogen</b>	Synthetic peptide corresponding to Human Nicotinic Acetylcholine Receptor beta 2/CHRNA2 aa 351-362 (internal sequence). NP_000739.1 Sequence: QPRHHCARQRLR  Database link: <a href="#">P17787</a>  <a href="#">Run BLAST with</a> <a href="#">Run BLAST with</a>
<b>Positive control</b>	Human cerebellum lysate; Human brain, cortex tissue.
<b>General notes</b>	This product was previously labelled as Nicotinic Acetylcholine Receptor beta 2

Reproducibility is key to advancing scientific discovery and accelerating scientists' next breakthrough.

Abcam is leading the way with our range of recombinant antibodies, knockout-validated antibodies and knockout cell lines, all of which support improved reproducibility.

We are also planning to innovate the way in which we present recommended applications and species on our product datasheets, so that only applications & species that have been tested in our own labs, our suppliers or by selected trusted collaborators are covered by our Abpromise™ guarantee.

In preparation for this, we have started to update the applications & species that this product is Abpromise guaranteed for.

We are also updating the applications & species that this product has been “predicted to work with,” however this information is not covered by our Abpromise guarantee.

Applications & species from publications and Abreviews that have not been tested in our own labs or in those of our suppliers are not covered by the Abpromise guarantee.

Please check that this product meets your needs before purchasing. If you have any questions, special requirements or concerns, please send us an inquiry and/or contact our Support team ahead of purchase. Recommended alternatives for this product can be found below, as well as customer reviews and Q&As.

## Properties

---

<b>Form</b>	Liquid
<b>Storage instructions</b>	Shipped at 4°C. Store at +4°C short term (1-2 weeks). Upon delivery aliquot. Store at -20°C long term. Avoid freeze / thaw cycle.
<b>Storage buffer</b>	pH: 7.30 Preservative: 0.02% Sodium azide Constituents: 0.5% BSA, 99% Tris buffered saline
<b>Purity</b>	Immunogen affinity purified
<b>Clonality</b>	Polyclonal
<b>Isotype</b>	IgG

## Applications

---

Our [Abpromise guarantee](#) covers the use of **ab189174** in the following tested applications.

The application notes include recommended starting dilutions; optimal dilutions/concentrations should be determined by the end user.

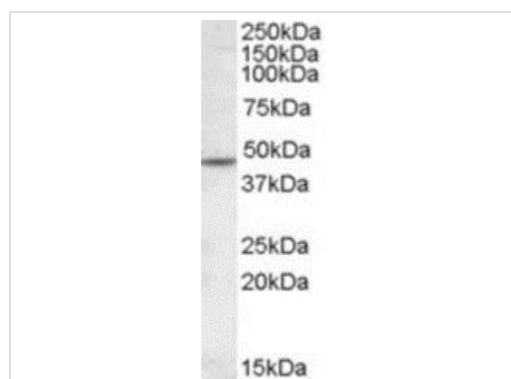
Application	Abreviews	Notes
WB		Use a concentration of 1 - 3 µg/ml. Detects a band of approximately 48 kDa (predicted molecular weight: 57 kDa). The observed molecular weight corresponds to earlier findings with different antibodies from other commercial sources.
IHC-P		Use a concentration of 3.75 µg/ml. Perform heat mediated antigen retrieval before commencing with IHC staining protocol.

## Target

---

<b>Function</b>	After binding acetylcholine, the AChR responds by an extensive change in conformation that affects all subunits and leads to opening of an ion-conducting channel across the plasma membrane.
<b>Involvement in disease</b>	Defects in CHRN2 are the cause of nocturnal frontal lobe epilepsy type 3 (ENFL3) [MIM:605375]. ENFL3 is an autosomal dominant epilepsy characterized by nocturnal seizures with hyperkinetic automatisms and poorly organized stereotyped movements.
<b>Sequence similarities</b>	Belongs to the ligand-gated ion channel (TC 1.A.9) family. Acetylcholine receptor (TC 1.A.9.1) subfamily. Beta-2/CHRN2 sub-subfamily.
<b>Cellular localization</b>	Cell junction > synapse > postsynaptic cell membrane. Cell membrane.

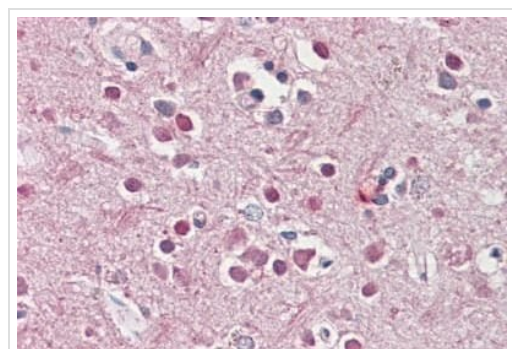
Images



Western blot - Anti-Nicotinic Acetylcholine Receptor beta 2/CHRN2 antibody (ab189174)

Anti-Nicotinic Acetylcholine Receptor beta 2/CHRN2 antibody (ab189174) at 1 µg/ml + Human cerebellum lysate (in RIPA buffer) at 35 µg

**Predicted band size:** 57 kDa



Immunohistochemistry (Formalin/PFA-fixed paraffin-embedded sections) - Anti-Nicotinic Acetylcholine Receptor beta 2/CHRN2 antibody (ab189174)

Immunohistochemical analysis of formalin-fixed, paraffin-embedded Human brain, cortex tissue labeling Nicotinic Acetylcholine Receptor beta 2/CHRN2 with ab189174 at 3.75 µg/ml.

**Please note:** All products are "FOR RESEARCH USE ONLY. NOT FOR USE IN DIAGNOSTIC PROCEDURES"

### Our Abpromise to you: Quality guaranteed and expert technical support

- Replacement or refund for products not performing as stated on the datasheet
- Valid for 12 months from date of delivery
- Response to your inquiry within 24 hours
- We provide support in Chinese, English, French, German, Japanese and Spanish
- Extensive multi-media technical resources to help you
- We investigate all quality concerns to ensure our products perform to the highest standards

If the product does not perform as described on this datasheet, we will offer a refund or replacement. For full details of the Abpromise, please visit <https://www.abcam.com/abpromise> or contact our technical team.

### Terms and conditions

- Guarantee only valid for products bought direct from Abcam or one of our authorized distributors