




Product datasheet

Anti-Ninein/NIN antibody ab210006

3 Images

Overview

Product name	Anti-Ninein/NIN antibody
Description	Rabbit polyclonal to Ninein/NIN
Host species	Rabbit
Tested applications	Suitable for: IHC-P
Species reactivity	Reacts with: Mouse, Rat Predicted to work with: Human 
Immunogen	Synthetic peptide within Human Ninein/NIN aa 180-230 (N terminal) conjugated to keyhole limpet haemocyanin. The exact sequence is proprietary. Sequence: QDWIEEKLQEV CEDLGITRDG HLNRRKKLVS CEQYGLQNVD GEMLEEVFHN Database link: Q8N4C6  Run BLAST with  Run BLAST with
Positive control	Mouse heart and rat brain tissues.
General notes	This product was previously labelled as Ninein

Properties

Form	Liquid
Storage instructions	Shipped at 4°C. Store at +4°C short term (1-2 weeks). Upon delivery aliquot. Store at -20°C long term. Avoid freeze / thaw cycle.
Storage buffer	Preservative: 0.09% Sodium azide Constituents: 1% BSA, 50% Glycerol
Purity	Protein A purified
Clonality	Polyclonal
Isotype	IgG

Applications

Applications

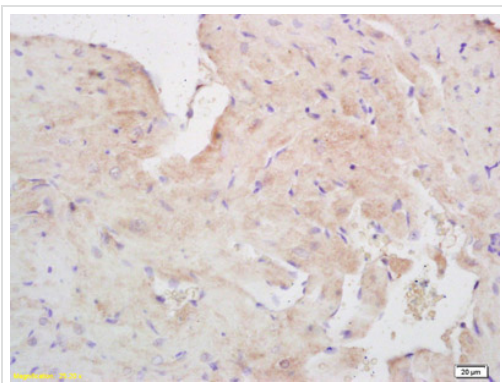
Our [Abpromise guarantee](#) covers the use of **ab210006** in the following tested applications.

The application notes include recommended starting dilutions; optimal dilutions/concentrations should be determined by the end user.

Application	Abreviews	Notes
IHC-P		1/100 - 1/500. Perform heat mediated antigen retrieval with citrate buffer pH 6 before commencing with IHC staining protocol. When using a fluorescent probe the recommended dilution is 1/50 – 1/200.

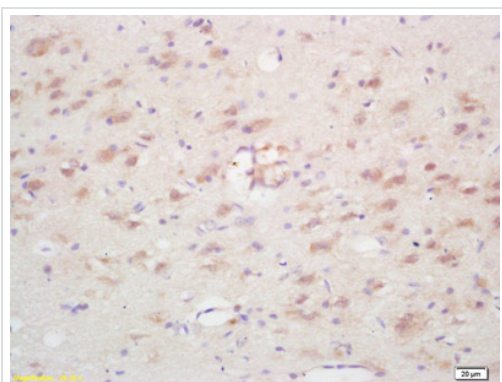
Target

Images



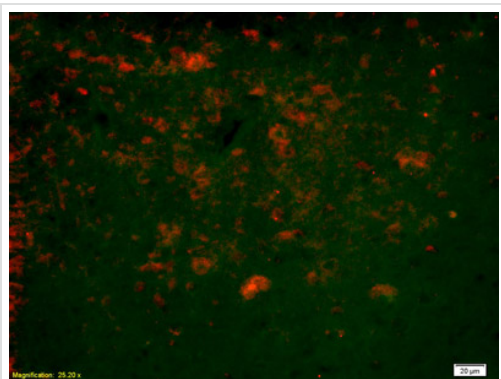
Immunohistochemistry (Formalin/PFA-fixed paraffin-embedded sections) - Anti-Ninein/NIN antibody (ab210006)

Immunohistochemical analysis of formalin-fixed, paraffin-embedded Mouse heart tissue labeling Ninein/NIN with ab210006 at 1/200 dilution followed by conjugation to the secondary antibody and DAB staining.



Immunohistochemistry (Formalin/PFA-fixed paraffin-embedded sections) - Anti-Ninein/NIN antibody (ab210006)

Immunohistochemical analysis of formalin-fixed, paraffin-embedded rat brain tissue labeling Ninein/NIN with ab210006 at 1/200 dilution followed by conjugation to the secondary antibody and DAB staining.



Immunohistochemistry (Formalin/PFA-fixed paraffin-embedded sections) - Anti-Ninein/NIN antibody (ab210006)

Immunohistochemical analysis of formalin-fixed, paraffin-embedded rat brain tissue labeling Ninein/NIN with ab210006 at 1/200 dilution overnight at 4°C, followed by Goat Anti-Rabbit IgG, Cy3 conjugated, used at 1/200 dilution for 40 minutes at 37°C.

Please note: All products are "FOR RESEARCH USE ONLY. NOT FOR USE IN DIAGNOSTIC PROCEDURES"

Our Abpromise to you: Quality guaranteed and expert technical support

- Replacement or refund for products not performing as stated on the datasheet
- Valid for 12 months from date of delivery
- Response to your inquiry within 24 hours
- We provide support in Chinese, English, French, German, Japanese and Spanish
- Extensive multi-media technical resources to help you
- We investigate all quality concerns to ensure our products perform to the highest standards

If the product does not perform as described on this datasheet, we will offer a refund or replacement. For full details of the Abpromise, please visit <https://www.abcam.com/abpromise> or contact our technical team.

Terms and conditions

- Guarantee only valid for products bought direct from Abcam or one of our authorized distributors