

Product datasheet

Anti-NIPBL antibody ab225908

1 Abreviews 2 Images

Overview

Product name	Anti-NIPBL antibody
Description	Rabbit polyclonal to NIPBL
Host species	Rabbit
Tested applications	Suitable for: IHC-P, WB
Species reactivity	Reacts with: Human
Immunogen	Recombinant fragment corresponding to Human NIPBL aa 2523-2697. Database link: Q6KC79
Positive control	IHC-P: Human liver tissue. WB: Recombinant human NIPBL protein.
General notes	This product was previously labelled as IDN3

Reproducibility is key to advancing scientific discovery and accelerating scientists' next breakthrough.

Abcam is leading the way with our range of recombinant antibodies, knockout-validated antibodies and knockout cell lines, all of which support improved reproducibility.

We are also planning to innovate the way in which we present recommended applications and species on our product datasheets, so that only applications & species that have been tested in our own labs, our suppliers or by selected trusted collaborators are covered by our Abpromise™ guarantee.

In preparation for this, we have started to update the applications & species that this product is Abpromise guaranteed for.

We are also updating the applications & species that this product has been "predicted to work with," however this information is not covered by our Abpromise guarantee.

Applications & species from publications and Abreviews that have not been tested in our own labs or in those of our suppliers are not covered by the Abpromise guarantee.

Please check that this product meets your needs before purchasing. If you have any questions, special requirements or concerns, please send us an inquiry and/or contact our Support team ahead of purchase. Recommended alternatives for this product can be found below, as well as customer reviews and Q&As.

Properties

Form	Liquid
Storage instructions	Shipped at 4°C. Store at +4°C short term (1-2 weeks). Upon delivery aliquot. Store at -20°C long term. Avoid freeze / thaw cycle.
Storage buffer	pH: 7.40 Constituents: 50% Glycerol (glycerin, glycerine), PBS, 0.03% Proclin 300
Purity	Protein G purified
Purification notes	Purity >95%.
Clonality	Polyclonal
Isotype	IgG

Applications

Our [Abpromise guarantee](#) covers the use of **ab225908** in the following tested applications.

The application notes include recommended starting dilutions; optimal dilutions/concentrations should be determined by the end user.

Application	Abreviews	Notes
IHC-P		1/20 - 1/200.
WB		1/500 - 1/5000. Predicted molecular weight: 316 kDa.

Target

Function	Probably plays a structural role in chromatin. Involved in sister chromatid cohesion, possibly by interacting with the cohesin complex.
Tissue specificity	Widely expressed. Highly expressed in heart, skeletal muscle, fetal and adult liver, fetal and adult kidney. Expressed at intermediates level in thymus, placenta, peripheral leukocyte and small intestine. Weakly or not expressed in brain, colon, spleen and lung.
Involvement in disease	Cornelia de Lange syndrome 1
Sequence similarities	Belongs to the SCC2/Nipped-B family. Contains 5 HEAT repeats.
Developmental stage	In embryos, it is expressed in developing limbs and later in cartilage primordia of the ulna and of various hand bones. Sites of craniofacial expression include the cartilage primordium of the basioccipital and basisphenoid skull bones and elsewhere in the head and face, including a region encompassing the mesenchyme adjacent to the cochlear canal. Also expressed in the spinal column, notochord and surface ectoderm sclerotome and what seem to be migrating myoblasts. Expressed in the developing heart in the atrial and ventricular myocardium and in the ventricular tuberculae but absent in the endocardial cushions. Also expressed in the developing esophagus, trachea and midgut loops, in the bronchi of the lung and in the tubules of the metanephros. Expression in organs and tissues not typically affected in CDL (e.g. the developing trachea, bronchi, esophagus, heart and kidney) may reflect a bias towards underreporting of more subtle aspects of the phenotype or problems that typically present later in life. Expressed in the mesenchyme surrounding the cochlear canal possibly reflecting the hearing impairment commonly found. Weakly or not expressed in embryonic brain.
Domain	Contains one Pro-Xaa-Val-Xaa-Leu (PxVxL) motif, which is required for interaction with

chromoshadow domains. This motif requires additional residues -7, -6, +4 and +5 of the central Val which contact the chromoshadow domain.

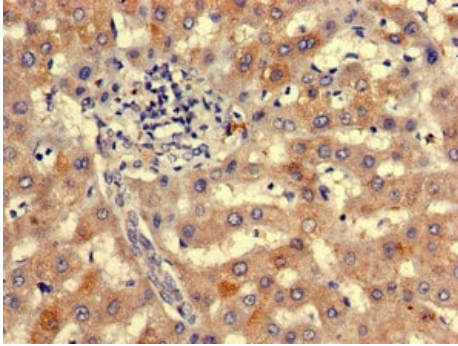
Cellular localization

Nucleus.

Form

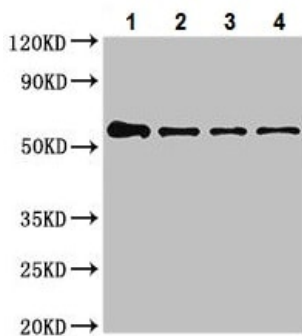
There are 3 isoforms produced by alternative splicing. Isoform 1 also known as: A; IDN3-A. Isoform 2 also known as: B; IDN3-B.

Images



Immunohistochemistry (Formalin/PFA-fixed paraffin-embedded sections) - Anti-NIPBL antibody (ab225908)

Paraffin-embedded human liver tissue stained for NIPBL using ab225908 at 1/100 dilution in immunohistochemical analysis.



Western blot - Anti-NIPBL antibody (ab225908)

All lanes : Anti-NIPBL antibody (ab225908) at 1/500 dilution

Lane 1 : Recombinant human NIPBL protein at 0.1 μ g

Lane 2 : Recombinant human NIPBL protein at 0.05 μ g

Lane 3 : Recombinant human NIPBL protein at 0.025 μ g

Lane 4 : Recombinant human NIPBL protein at 0.0125 μ g

Predicted band size: 316 kDa

This antibody has only been tested in WB using the recombinant protein, we have no data for endogenous protein.

Please note: All products are "FOR RESEARCH USE ONLY. NOT FOR USE IN DIAGNOSTIC PROCEDURES"

Our Abpromise to you: Quality guaranteed and expert technical support

- Replacement or refund for products not performing as stated on the datasheet
- Valid for 12 months from date of delivery
- Response to your inquiry within 24 hours

- We provide support in Chinese, English, French, German, Japanese and Spanish
- Extensive multi-media technical resources to help you
- We investigate all quality concerns to ensure our products perform to the highest standards

If the product does not perform as described on this datasheet, we will offer a refund or replacement. For full details of the Abpromise, please visit <https://www.abcam.com/abpromise> or contact our technical team.

Terms and conditions

- Guarantee only valid for products bought direct from Abcam or one of our authorized distributors