

Product datasheet

Anti-NKG2D antibody [EPR22935-131] ab233557

Recombinant RabMAb

2 Images

Overview

Product name	Anti-NKG2D antibody [EPR22935-131]
Description	Rabbit monoclonal [EPR22935-131] to NKG2D
Host species	Rabbit
Tested applications	Suitable for: Flow Cyt Unsuitable for: ICC/IF,IHC-P,IP or WB
Species reactivity	Reacts with: Human
Immunogen	Recombinant fragment within Human NKG2D aa 50-250. The exact sequence is proprietary. Database link: P26718
Positive control	Flow cyt: Human PBMCs.
General notes	<p>This product is a recombinant monoclonal antibody, which offers several advantages including:</p> <ul style="list-style-type: none"> - High batch-to-batch consistency and reproducibility - Improved sensitivity and specificity - Long-term security of supply - Animal-free production <p>For more information see here.</p> <p>Our RabMAb[®] technology is a patented hybridoma-based technology for making rabbit monoclonal antibodies. For details on our patents, please refer to RabMAb[®] patents.</p> <p>Reproducibility is key to advancing scientific discovery and accelerating scientists' next breakthrough.</p> <p>Abcam is leading the way with our range of recombinant antibodies, knockout-validated antibodies and knockout cell lines, all of which support improved reproducibility.</p> <p>We are also planning to innovate the way in which we present recommended applications and species on our product datasheets, so that only applications & species that have been tested in our own labs, our suppliers or by selected trusted collaborators are covered by our Abpromise[™] guarantee.</p> <p>In preparation for this, we have started to update the applications & species that this product is Abpromise guaranteed for.</p> <p>We are also updating the applications & species that this product has been "predicted to work with," however this information is not covered by our Abpromise guarantee.</p> <p>Applications & species from publications and Abreviews that have not been tested in our own</p>

labs or in those of our suppliers are not covered by the Abpromise guarantee.

Please check that this product meets your needs before purchasing. If you have any questions, special requirements or concerns, please send us an inquiry and/or contact our Support team ahead of purchase. Recommended alternatives for this product can be found below, as well as customer reviews and Q&As.

Properties

Form	Liquid
Storage instructions	Shipped at 4°C. Store at +4°C short term (1-2 weeks). Upon delivery aliquot. Store at -20°C long term. Avoid freeze / thaw cycle.
Storage buffer	pH: 7.2 Preservative: 0.01% Sodium azide Constituents: PBS, 40% Glycerol (glycerin, glycerine), 0.05% BSA
Purity	Protein A purified
Clonality	Monoclonal
Clone number	EPR22935-131
Isotype	IgG

Applications

Our [Abpromise guarantee](#) covers the use of **ab233557** in the following tested applications.

The application notes include recommended starting dilutions; optimal dilutions/concentrations should be determined by the end user.

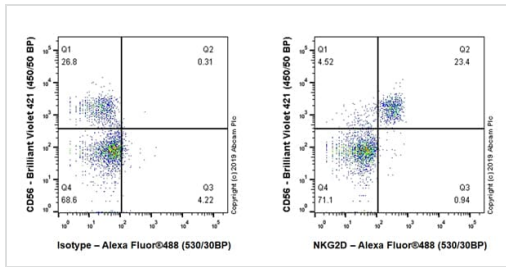
Application	Abreviews	Notes
Flow Cyt		1/600.

Application notes Is unsuitable for ICC/IF, IHC-P, IP or WB.

Target

Function	Receptor for MICA, MICB, ULBP1, ULBP2, ULBP3 (ULBP2>ULBP1>ULBP3) and ULBP4. Plays a role as a receptor for the recognition of MHC class I HLA-E molecules by NK cells and some cytotoxic T-cells. Involved in the immune surveillance exerted by T- and B-lymphocytes.
Tissue specificity	Natural killer cells. Expressed on essentially all CD56+CD3- NK cells from freshly isolated PBMC. Also detected in gamma-delta cells and CD8+ alpha-beta T-cells. Expressed in interferon-producing killer dendritic cells (IKDCs).
Sequence similarities	Contains 1 C-type lectin domain.
Cellular localization	Membrane.

Images



Flow Cytometry - Anti-NKG2D antibody [EPR22935-131] (ab233557)

Flow cytometric analysis of Human peripheral blood mononuclear cell (PBMC) cells labelling NKG2D with ab233557 at 1/600 (Right) compared with a Rabbit monoclonal IgG (ab172730) isotype control (Left). Goat anti rabbit IgG (Alexa Fluor® 488, ab150097) at 1/5000 dilution was used as the secondary antibody.

Cells were stained with rabbit IgG (Left) or ab233557 (Right). Then stained with anti-CD3 conjugated to Alexa Fluor® 647 and anti-CD56 conjugated to BV421.

Gated on CD3(-) viable cells (PMID: 26041808).

Why choose a recombinant antibody?

- Research with confidence**
Consistent and reproducible results
- Long-term and scalable supply**
Recombinant technology
- Success from the first experiment**
Confirmed specificity
- Ethical standards compliant**
Animal-free production

Anti-NKG2D antibody [EPR22935-131] (ab233557)

Please note: All products are "FOR RESEARCH USE ONLY. NOT FOR USE IN DIAGNOSTIC PROCEDURES"

Our Abpromise to you: Quality guaranteed and expert technical support

- Replacement or refund for products not performing as stated on the datasheet
- Valid for 12 months from date of delivery
- Response to your inquiry within 24 hours
- We provide support in Chinese, English, French, German, Japanese and Spanish
- Extensive multi-media technical resources to help you
- We investigate all quality concerns to ensure our products perform to the highest standards

If the product does not perform as described on this datasheet, we will offer a refund or replacement. For full details of the Abpromise, please visit <https://www.abcam.com/abpromise> or contact our technical team.

Terms and conditions

- Guarantee only valid for products bought direct from Abcam or one of our authorized distributors