




Product datasheet

Anti-NME2 antibody [4G7A8] ab204958

3 Images

Overview

Product name	Anti-NME2 antibody [4G7A8]
Description	Mouse monoclonal [4G7A8] to NME2
Host species	Mouse
Tested applications	Suitable for: WB, IHC-P
Species reactivity	<p>Reacts with: Human</p> <p>Predicted to work with: Mouse, Rat, Chicken, Cow, Dog, Pig, Xenopus laevis, Orangutan </p>
Immunogen	<p>Recombinant full length protein corresponding to Human NME2 aa 1-152. Expressed in E. coli.</p> <p>Sequence:</p> <pre>MANLERTFIAIKPDGVQRGLVGEIIKRFEQKGFRLVAMKFL RASEEHLKQ HYDLKDRPFFPGLVKYMNSGPVVAMVWEGLNVVKTGRV MLGETNPADSK PGTIRGDFCIQVGRNIIHGSDSVKSAEKEISLWFKPEELVDY KSCAHDWV YE</pre> <p>Database link: P22392-1</p> <p style="text-align: right;">  Run BLAST with  Run BLAST with </p>
Positive control	Human full length recombinant NME2 (amino acids 1-152). Lysate from HEK293 cells transfected with full length recombinant NME2 (amino acids 1-152). Human ovarian cancer tissue.
General notes	<p>Reproducibility is key to advancing scientific discovery and accelerating scientists' next breakthrough.</p> <p>Abcam is leading the way with our range of recombinant antibodies, knockout-validated antibodies and knockout cell lines, all of which support improved reproducibility.</p> <p>We are also planning to innovate the way in which we present recommended applications and species on our product datasheets, so that only applications & species that have been tested in our own labs, our suppliers or by selected trusted collaborators are covered by our Abpromise™ guarantee.</p> <p>In preparation for this, we have started to update the applications & species that this product is Abpromise guaranteed for.</p> <p>We are also updating the applications & species that this product has been “predicted to work with,” however this information is not covered by our Abpromise guarantee.</p> <p>Applications & species from publications and Abreviews that have not been tested in our own</p>

labs or in those of our suppliers are not covered by the Abpromise guarantee.

Please check that this product meets your needs before purchasing. If you have any questions, special requirements or concerns, please send us an inquiry and/or contact our Support team ahead of purchase. Recommended alternatives for this product can be found below, as well as customer reviews and Q&As.

Properties

Form	Liquid
Storage instructions	Shipped at 4°C. Store at +4°C short term (1-2 weeks). Upon delivery aliquot. Store at -20°C long term. Avoid freeze / thaw cycle.
Storage buffer	Preservative: 0.05% Sodium azide Constituent: PBS
Purity	Protein G purified
Purification notes	Purified from tissue culture supernatant.
Clonality	Monoclonal
Clone number	4G7A8
Isotype	IgG1

Applications

Our [Abpromise guarantee](#) covers the use of **ab204958** in the following tested applications.

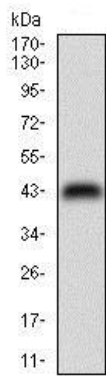
The application notes include recommended starting dilutions; optimal dilutions/concentrations should be determined by the end user.

Application	Abreviews	Notes
WB		1/500 - 1/2000. Predicted molecular weight: 17 kDa.
IHC-P		1/200 - 1/1000.

Target

Function	Major role in the synthesis of nucleoside triphosphates other than ATP. Negatively regulates Rho activity by interacting with AKAP13/LBC. Acts as a transcriptional activator of the MYC gene; binds DNA non-specifically (PubMed:8392752). Exhibits histidine protein kinase activity.
Tissue specificity	Ubiquitously expressed.
Sequence similarities	Belongs to the NDK family.
Cellular localization	Cytoplasm. Nucleus. Isoform 2 is mainly cytoplasmic and isoform 1 and isoform 2 are excluded from the nucleolus.

Images

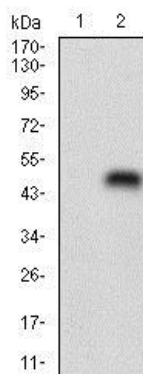


Western blot - Anti-NME2 antibody [4G7A8]
(ab204958)

Anti-NME2 antibody [4G7A8] (ab204958) at 1/500 dilution +
Human full length recombinant NME2 (amino acids 1-152).

Predicted band size: 17 kDa

(Expected MW is 43.2 kDa)



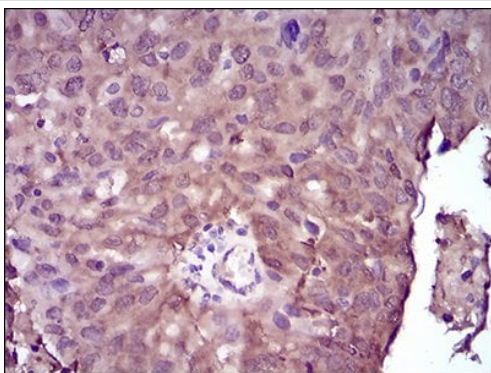
Western blot - Anti-NME2 antibody [4G7A8]
(ab204958)

All lanes : Anti-NME2 antibody [4G7A8] (ab204958) at 1/500
dilution

Lane 1 : HEK293 cell lysate

Lane 2 : Lysate from HEK293 cells transfected with full length
recombinant NME2 (amino acids 1-152).

Predicted band size: 17 kDa



Immunohistochemistry (Formalin/PFA-fixed paraffin-
embedded sections) - Anti-NME2 antibody [4G7A8]
(ab204958)

Immunohistochemical analysis of paraffin-embedded, DAB-stained
human ovarian cancer tissue, labeling NME2 using ab204958 at a
1/200 dilution

Please note: All products are "FOR RESEARCH USE ONLY. NOT FOR USE IN DIAGNOSTIC PROCEDURES"

Our Abpromise to you: Quality guaranteed and expert technical support

- Replacement or refund for products not performing as stated on the datasheet
- Valid for 12 months from date of delivery
- Response to your inquiry within 24 hours

- We provide support in Chinese, English, French, German, Japanese and Spanish
- Extensive multi-media technical resources to help you
- We investigate all quality concerns to ensure our products perform to the highest standards

If the product does not perform as described on this datasheet, we will offer a refund or replacement. For full details of the Abpromise, please visit <https://www.abcam.com/abpromise> or contact our technical team.

Terms and conditions

- Guarantee only valid for products bought direct from Abcam or one of our authorized distributors