

Product datasheet

Anti-NME2 antibody [EPR8351] ab131329

Recombinant RabMAb

[3 References](#) [9 Images](#)

Overview

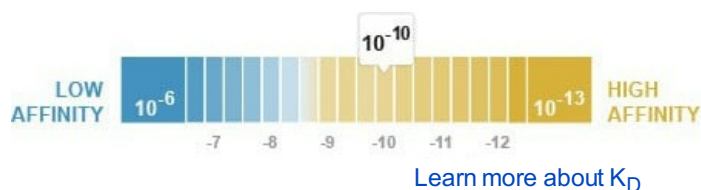
Product name	Anti-NME2 antibody [EPR8351]
Description	Rabbit monoclonal [EPR8351] to NME2
Host species	Rabbit
Specificity	<p>The immunogen used to raise this antibody shares 85% homology with human NME1. Cross-reactivity with this protein has not been confirmed experimentally.</p> <p>The mouse, rat and Chinese hamster recommendation is based on the WB results. We do not guarantee IHC-P for mouse, rat and Chinese hamster.</p>
Tested applications	Suitable for: Flow Cyt (Intra), WB, IHC-P, ICC/IF
Species reactivity	Reacts with: Mouse, Rat, Human, Chinese hamster
Immunogen	Synthetic peptide. This information is proprietary to Abcam and/or its suppliers.
Positive control	WB: LnCaP, PC-12, CHO, 293T, Human spleen and Human thyroid lysates. Rat and mouse kidney tissue lysates; IHC: Human kidney tissue and human cerebellum tissue; Flow Cyt (intra): HEK293 cells; ICC/IF: CHO-S cells.
General notes	<p>This product is a recombinant monoclonal antibody, which offers several advantages including:</p> <ul style="list-style-type: none"> - High batch-to-batch consistency and reproducibility - Improved sensitivity and specificity - Long-term security of supply - Animal-free production <p>For more information see here.</p> <p>Our RabMAb[®] technology is a patented hybridoma-based technology for making rabbit monoclonal antibodies. For details on our patents, please refer to RabMAb[®] patents.</p> <p>We are constantly working hard to ensure we provide our customers with best in class antibodies. As a result of this work we are pleased to now offer this antibody in purified format. We are in the process of updating our datasheets. The purified format is designated 'PUR' on our product labels. If you have any questions regarding this update, please contact our Scientific Support team.</p>

Properties

Form Liquid

Storage instructions Shipped at 4°C. Store at +4°C short term (1-2 weeks). Upon delivery aliquot. Store at -20°C long term. Avoid freeze / thaw cycle.

Dissociation constant (K_D) K_D = 3.35 x 10⁻¹⁰ M



Storage buffer pH: 7.20
 Preservative: 0.01% Sodium azide
 Constituents: 59% PBS, 40% Glycerol (glycerin, glycerine), 0.05% BSA

Purity Protein A purified

Clonality Monoclonal

Clone number EPR8351

Isotype IgG

Applications

The Abpromise guarantee Our [Abpromise guarantee](#) covers the use of ab131329 in the following tested applications.

The application notes include recommended starting dilutions; optimal dilutions/concentrations should be determined by the end user.

Application	Abreviews	Notes
Flow Cyt (Intra)		1/20. For unpurified use at 1/10 - 1/100. ab172730 - Rabbit monoclonal IgG, is suitable for use as an isotype control with this antibody.
WB		1/1000. Predicted molecular weight: 17 kDa. For unpurified use at 1/1000 - 1/10000.
IHC-P		1/500. Perform heat mediated antigen retrieval with citrate buffer pH 6 before commencing with IHC staining protocol. See IHC antigen retrieval protocols . For unpurified use at 1/100 - 1/250. The mouse, rat and Chinese hamster recommendation is based on the WB results. We do not guarantee IHC-P for mouse, rat and
ICC/IF		Use at an assay dependent concentration.

Target

Function Major role in the synthesis of nucleoside triphosphates other than ATP. Negatively regulates Rho activity by interacting with AKAP13/LBC. Acts as a transcriptional activator of the MYC gene; binds DNA non-specifically (PubMed:8392752). Exhibits histidine protein kinase activity.

Tissue specificity Ubiquitously expressed.

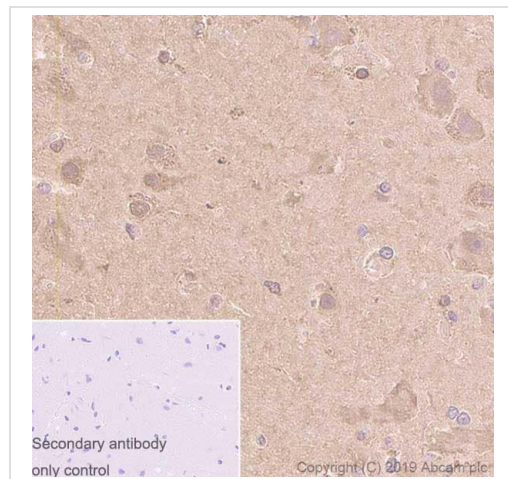
Sequence similarities

Belongs to the NDK family.

Cellular localization

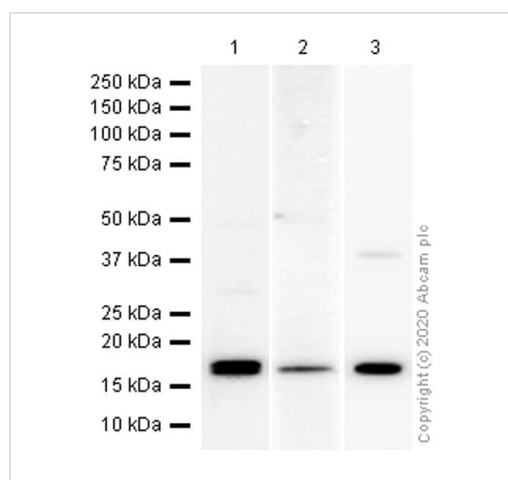
Cytoplasm. Nucleus. Isoform 2 is mainly cytoplasmic and isoform 1 and isoform 2 are excluded from the nucleolus.

Images



Immunohistochemistry (Formalin/PFA-fixed paraffin-embedded sections) - Anti-NME2 antibody [EPR8351] (ab131329)

Immunohistochemistry (Formalin/PFA-fixed paraffin-embedded sections) analysis of human cerebrum tissue sections labeling NME2 with purified ab131329 at 1/500 dilution (0.22 µg/mL). Heat mediated antigen retrieval using Bond™ Epitope Retrieval Solution 2 (pH 9.0). Rabbit specific IHC polymer detection kit HRP/DAB (ab209101) was used as the secondary antibody. Negative control: PBS instead of the primary antibody. Hematoxylin was used as a counterstain.



Western blot - Anti-NME2 antibody [EPR8351] (ab131329)

All lanes : Anti-NME2 antibody [EPR8351] (ab131329) at 1/1000 dilution (purified)

Lane 1 : Mouse kidney lysate

Lane 2 : Rat kidney lysate

Lane 3 : CHO-S (Chinese hamster ovary epithelial cell) whole cell lysate

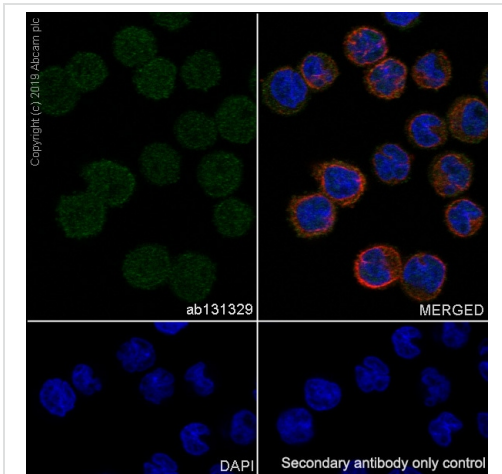
Lysates/proteins at 15 µg per lane.

Secondary

All lanes : Goat Anti-Rabbit IgG H&L (HRP) (ab97051) at 1/20000 dilution

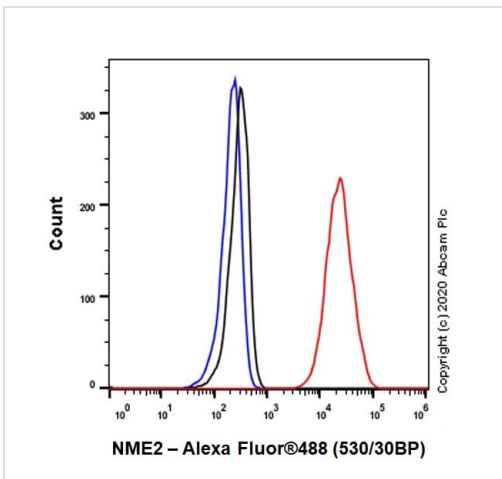
Predicted band size: 17 kDa

Observed band size: 17 kDa



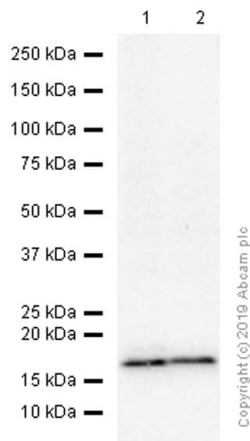
Immunocytochemistry/ Immunofluorescence - Anti-NME2 antibody [EPR8351] (ab131329)

Immunocytochemistry/ Immunofluorescence analysis of CHO-S (Chinese hamster ovary epithelial cell) cells labeling NME2 with purified ab131329 at 1/50 dilution (2.18 µg/ml). Cells were fixed in 4% Paraformaldehyde and permeabilized with 0.1% TritonX-100. Cells were counterstained with Ab195889 Anti-alpha Tubulin antibody [DM1A] - Microtubule Marker (Alexa Fluor® 594) 1/200 (2.5 µg/mL). Goat anti rabbit IgG (Alexa Fluor® 488, ab150077) was used as the secondary antibody at 1/1000 (2 µg/mL) dilution. DAPI (blue) was used as nuclear counterstain. PBS instead of the primary antibody was used as the secondary antibody only control.



Flow Cytometry (Intracellular) - Anti-NME2 antibody [EPR8351] (ab131329)

Intracellular Flow Cytometry analysis of HEK-293 (Human embryonickidney epithelial cell) cells labeling NME2 with purified ab131329 at 1/20 dilution (5µg/mL) (Red). Cells were fixed with 4% Paraformaldehyde and permeabilised with 90% Methanol. A Goat anti rabbit IgG (Alexa Fluor® 488, ab150077) secondary antibody was used at 1/2000. Isotype control - Rabbit monoclonal IgG (Black). Unlabeled control - Cell without incubation with primary antibody and secondary antibody (Blue).



Western blot - Anti-NME2 antibody [EPR8351] (ab131329)

All lanes : Anti-NME2 antibody [EPR8351] (ab131329) at 1/1000 dilution (purified)

Lane 1 : 293T (Human embryonic kidney epithelial cell) whole cell lysate

Lane 2 : PC-12 (Rat adrenal gland pheochromocytoma) whole cell lysate

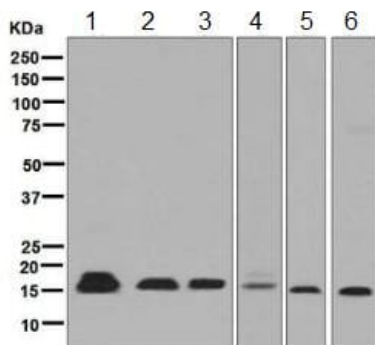
Lysates/proteins at 20 µg per lane.

Secondary

All lanes : Goat Anti-Rabbit IgG H&L (HRP) (ab97051) at 1/20000 dilution

Predicted band size: 17 kDa

Observed band size: 17 kDa



Western blot - Anti-NME2 antibody [EPR8351] (ab131329)

All lanes : Anti-NME2 antibody [EPR8351] (ab131329) at 1/1000 dilution (unpurified)

Lane 1 : LnCaP cell lysate

Lane 2 : PC-12 cell lysate

Lane 3 : CHO cell lysate

Lane 4 : 293T cell lysate

Lane 5 : Human spleen lysate

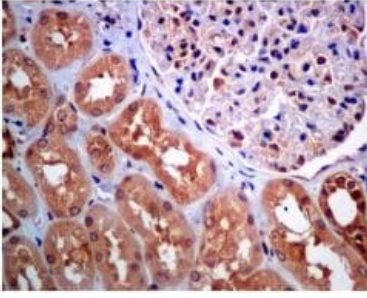
Lane 6 : Human thyroid lysate

Lysates/proteins at 10 µg per lane.

Secondary

All lanes : Goat anti-rabbit HRP at 1/2000 dilution

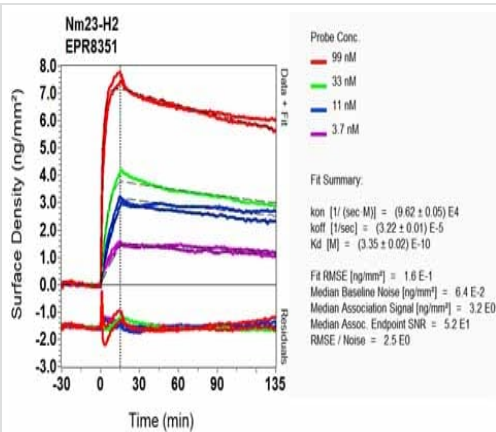
Predicted band size: 17 kDa



Immunohistochemistry (Formalin/PFA-fixed paraffin-embedded sections) - Anti-NME2 antibody [EPR8351] (ab131329)

Immunohistochemical analysis of paraffin-embedded Human kidney tissue labelling NME2 with unpurified ab131329 at 1/100 dilution.

Perform heat mediated antigen retrieval with citrate buffer pH 6 before commencing with IHC staining protocol.



SPR Scanning - Anti-NME2 antibody [EPR8351] (ab131329)

Equilibrium dissociation constant (K_D)

Learn more about K_D

[Click here to learn more about \$K_D\$](#)

Why choose a recombinant antibody?

- Research with confidence**
Consistent and reproducible results
- Long-term and scalable supply**
Recombinant technology
- Success from the first experiment**
Confirmed specificity
- Ethical standards compliant**
Animal-free production

Anti-NME2 antibody [EPR8351] (ab131329)

Please note: All products are "FOR RESEARCH USE ONLY. NOT FOR USE IN DIAGNOSTIC PROCEDURES"

Our Abpromise to you: Quality guaranteed and expert technical support

- Replacement or refund for products not performing as stated on the datasheet
- Valid for 12 months from date of delivery
- Response to your inquiry within 24 hours

- We provide support in Chinese, English, French, German, Japanese and Spanish
- Extensive multi-media technical resources to help you
- We investigate all quality concerns to ensure our products perform to the highest standards

If the product does not perform as described on this datasheet, we will offer a refund or replacement. For full details of the Abpromise, please visit <https://www.abcam.com/abpromise> or contact our technical team.

Terms and conditions

- Guarantee only valid for products bought direct from Abcam or one of our authorized distributors